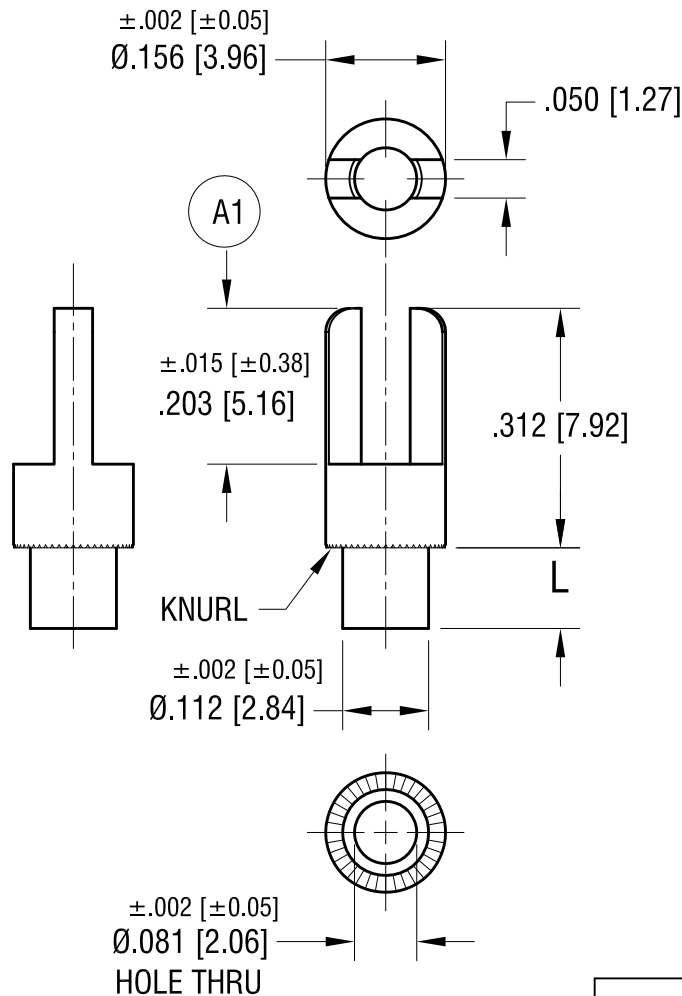


ACTUAL SIZE



PART NO.	'L' DIM.
1510-1	.075 [1.91]
1510-2	.105 [2.67]
1510-3	.135 [3.43]
1510-4	.165 [4.19]

KEYSTONE ELECTRONICS CORP.

www.keyelco.com • NEW HYDE PARK, NY 11040 • Tel (516) 328-7500

PART NAME

TERMINAL

MATERIAL

BRASS

FINISH

TIN PLATE

DRN BY

BOONE

DATE

6.10.02

APP'D

RH

SCALE

4X

TOLERANCES

INCH [MM]

DECIMAL $\pm .005$ [± 0.13]

ANGULAR $\pm 1^\circ$

UNLESS OTHERWISE SPECIFIED

CODE

C

DWG NO.

1510-

7.14.21 CHANGE AS PER ECN 21-068

A

REV.

DATE

DESCRIPTION

(A1) WAS $.203 \pm .005$

Mouser Electronics

Authorized Distributor

Click to View Pricing, Inventory, Delivery & Lifecycle Information:

[Keystone Electronics:](#)

[1510-1](#)