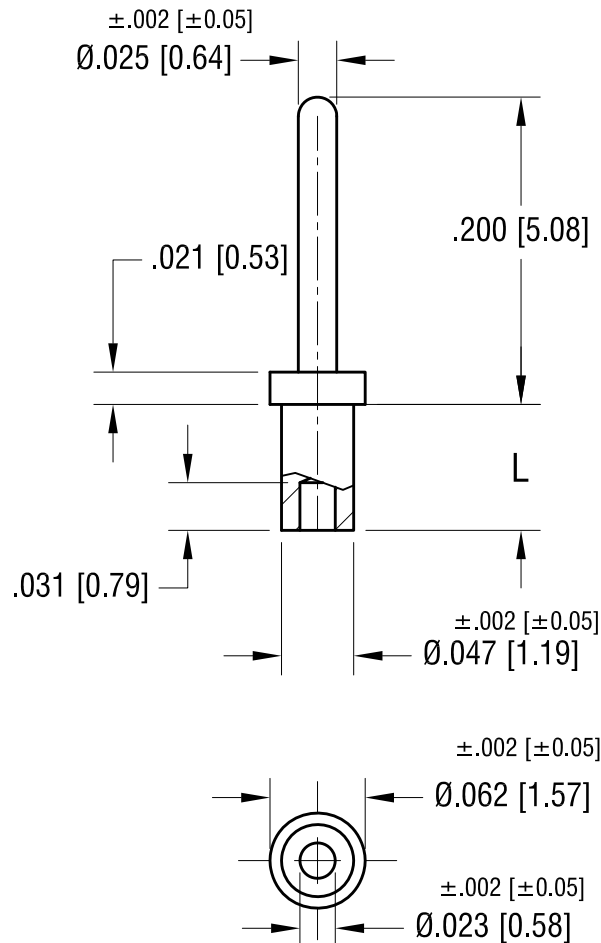


ACTUAL SIZE



P/N 1427-1



NOTE:

1. MOUNTING HOLE .052 [1.32]

PART NO.	'L' DIM.
1427-1	.051 [1.30]
1427-2	.082 [2.08]

3.12.20 1427-3 & 1427-4 ARE OBSOLETE  
CHANGE AS PER ECN 20-023

A

<b>KEYSTONE ELECTRONICS CORP.</b>			
www.keyelco.com • NEW HYDE PARK, NY 11040 • Tel (516) 328-7500			
PART NAME MICRO PIN, SWAGE MOUNT			
MATERIAL BRASS			
FINISH TIN PLATE		DRN BY BOONE	DATE 4.30.02
		APP'D	SCALE 8X
TOLERANCES	INCH [MM]	CODE	DWG NO.
DECIMAL	± .005 [± 0.13]	C	1427-
ANGULAR	± 1°		
UNLESS OTHERWISE SPECIFIED			

REV.

DATE

DESCRIPTION

# Mouser Electronics

Authorized Distributor

Click to View Pricing, Inventory, Delivery & Lifecycle Information:

[Keystone Electronics:](#)

[1427-1](#)