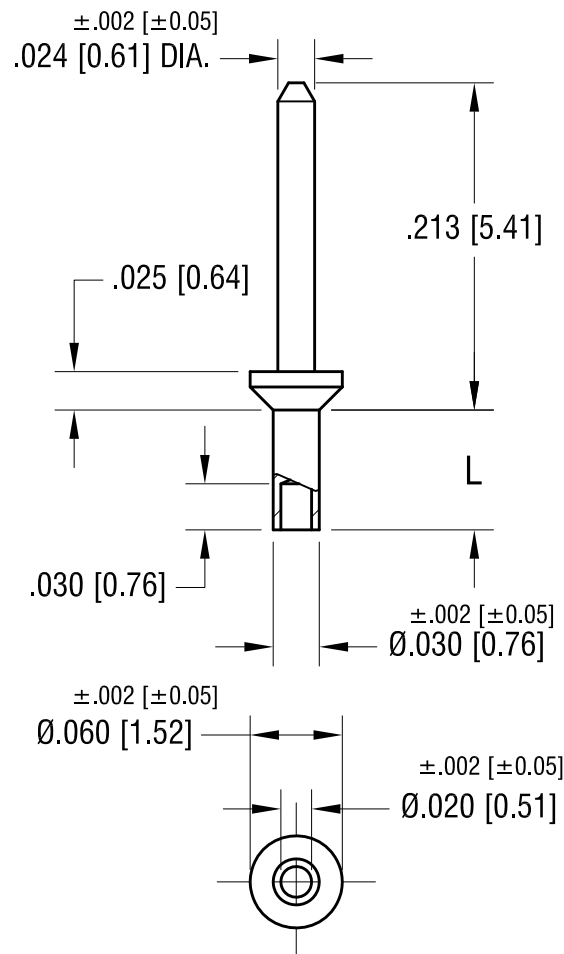


**ACTUAL SIZE**

**P/N 1426-2**



NOTE:  
1. MOUNTING HOLE .035 [0.89] DIA.

PART NO.	'L' DIM.
1426-1	.047 [1.19]
1426-2	.078 [1.98]
1426-3	.110 [2.79]
1426-4	.141 [3.58]

**KEYSTONE ELECTRONICS CORP.**

www.keyelco.com • NEW HYDE PARK, NY 11040 • Tel (516) 328-7500

PART NAME

MICRO PIN, SWAGE MOUNT

MATERIAL

BRASS

FINISH

TIN PLATE

DRN BY

BOONE

DATE

5.01.02

APP'D

LN

SCALE

8X

TOLERANCES

INCH [MM]

DECIMAL  $\pm .005$  [ $\pm 0.13$ ]

ANGULAR  $\pm 1^\circ$

UNLESS OTHERWISE SPECIFIED

CODE

DWG NO.

C

**1426-**

DATE

DESCRIPTION

REV.

# Mouser Electronics

Authorized Distributor

Click to View Pricing, Inventory, Delivery & Lifecycle Information:

[Keystone Electronics:](#)

[1426-1](#)