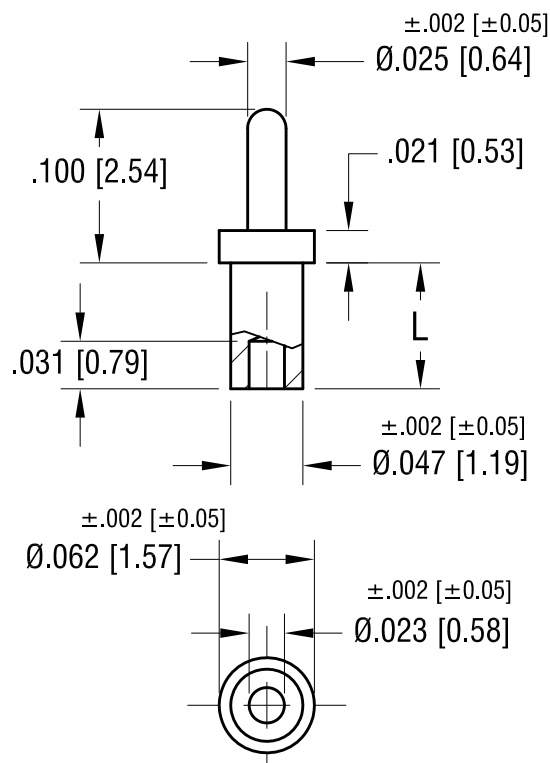


**ACTUAL SIZE**

P/N 1424-1



NOTE:  
MOUNTING HOLE :  $.052$  [ $1.32$ ] DIA.

PART NO.	'L' DIM.
1424-1	$.051$ [ $1.30$ ]
1424-2	$.082$ [ $2.08$ ]
1424-3	$.113$ [ $2.87$ ]
1424-4	$.145$ [ $3.68$ ]

**KEYSTONE ELECTRONICS CORP.**

www.keyelco.com • NEW HYDE PARK, NY 11040 • Tel (516) 328-7500

PART NAME

MICRO PIN, SWAGE MOUNT

MATERIAL

BRASS

FINISH

TIN PLATE

DRN BY

BOONE

DATE

4.30.02

APP'D

LN

SCALE

8X

TOLERANCES

INCH [MM]

DECIMAL  $\pm .005$  [ $\pm 0.13$ ]

ANGULAR  $\pm 1^\circ$

UNLESS OTHERWISE SPECIFIED

CODE

C

DWG NO.

1424-

DATE	DESCRIPTION	REV.
------	-------------	------

# Mouser Electronics

Authorized Distributor

Click to View Pricing, Inventory, Delivery & Lifecycle Information:

[Keystone Electronics:](#)

[1424-1](#)