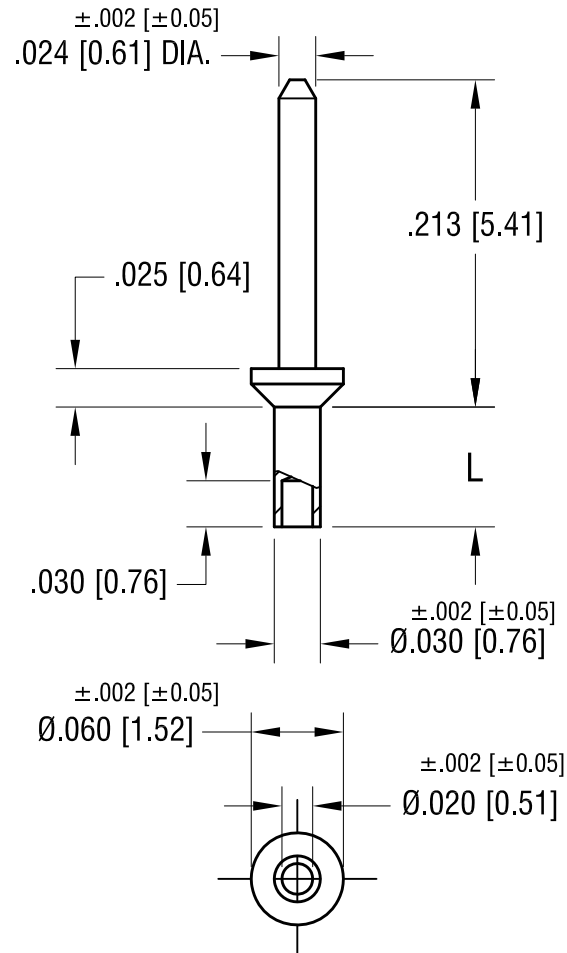


ACTUAL SIZE

P/N 1406-2



NOTE:

1. FINISH: THE GOLD PLATE SPEC: .000010" AU
OVER .000100-.000150" Ni.
2. MOUNTING HOLE .035 [0.89] DIA.

PART NO.	'L' DIM.
1406-1	.047 [1.19]
1406-2	.078 [1.98]
1406-3	.110 [2.79]
1406-4	.141 [3.58]

KEYSTONE ELECTRONICS CORP.

www.keyelco.com • NEW HYDE PARK, NY 11040 • Tel (516) 328-7500

PART NAME

MICRO PIN, SWAGE MOUNT

MATERIAL

BRASS

FINISH

AS NOTED

DRN BY

BOONE

DATE

5.01.02

APP'D

RH

SCALE

8X

TOLERANCES

INCH [MM]

DECIMAL

$\pm .005$ [± 0.13]

ANGULAR

$\pm 1^\circ$

UNLESS OTHERWISE SPECIFIED

CODE

C

DWG NO.

1406-

DATE

DESCRIPTION

REV.

Mouser Electronics

Authorized Distributor

Click to View Pricing, Inventory, Delivery & Lifecycle Information:

[Keystone Electronics:](#)

[1406-2](#)