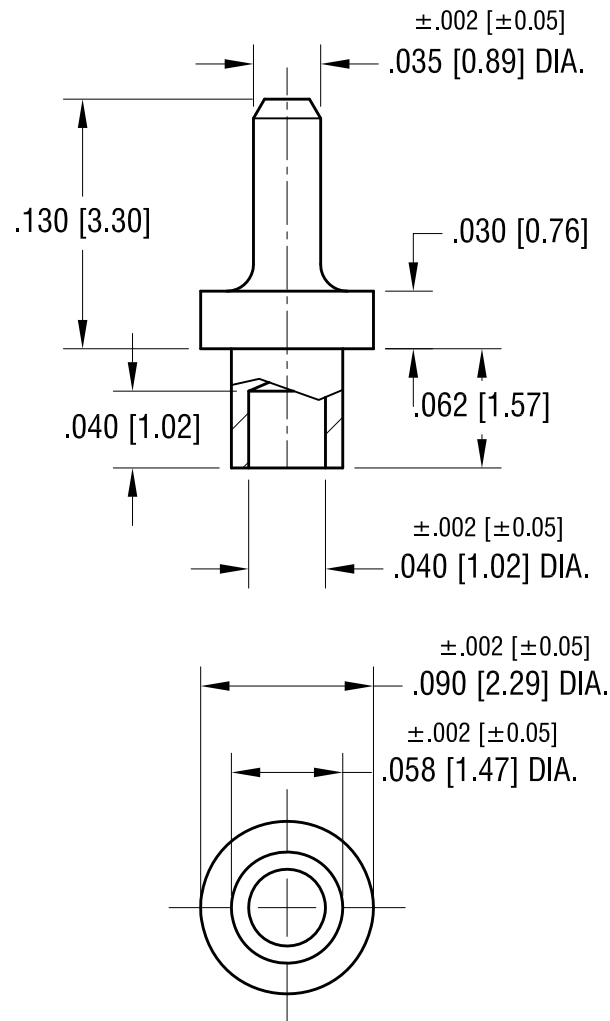


ACTUAL SIZE



NOTE:

1. MOUNTING HOLE .062 [1.57] DIA.

6.18.09	CHANGE AS PER ECN 09-074	A
DATE	DESCRIPTION	REV.

KEYSTONE ELECTRONICS CORP.			
www.keyelco.com ● NEW HYDE PARK, NY 11040● Tel (516) 328-7500			
PART NAME			
MICRO PIN, SWAGE MOUNT			
MATERIAL			
BRASS			
FINISH		DRN BY	DATE
		BOONE	4.03.07
TIN PLATE		APP'D	SCALE
		RH	10X
TOLERANCES	INCH [MM]	CODE	DWG NO.
DECIMAL	± .005 [± 0.13 ]	C	1381-1
ANGULAR	± 1°		
UNLESS OTHERWISE SPECIFIED			

# Mouser Electronics

Authorized Distributor

Click to View Pricing, Inventory, Delivery & Lifecycle Information:

[Keystone Electronics:](#)

[1381-1](#)