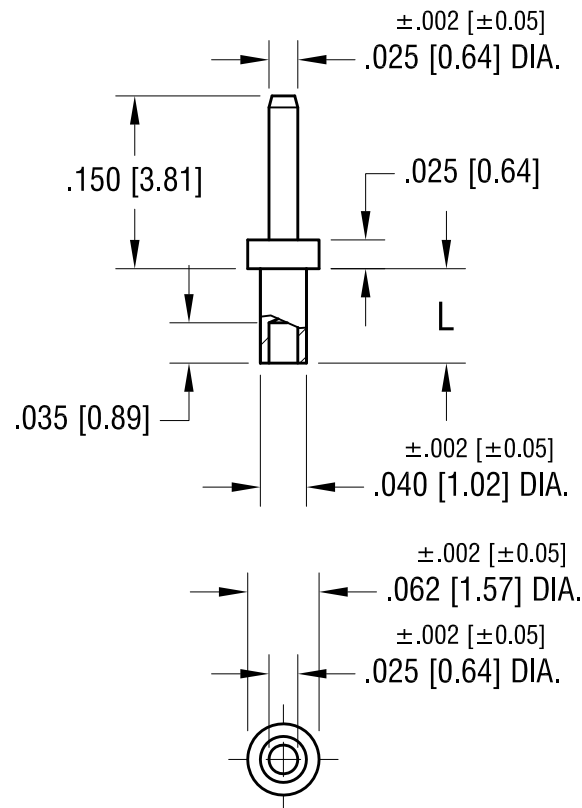


**ACTUAL SIZE**  
**P/N 1369-2**



NOTE:  
1. MOUNTING HOLE  $.043$  [ $1.09$ ] DIA.

PART NO.	'L' DIM.
1369-1	$.051$ [ $1.30$ ]
1369-2	$.082$ [ $2.08$ ]
1369-3	$.113$ [ $2.87$ ]

<b>KEYSTONE ELECTRONICS CORP.</b>			
www.keyelco.com • NEW HYDE PARK, NY 11040 • Tel (516) 328-7500			
PART NAME MICRO PIN, SWAGE MOUNT			
MATERIAL BRASS			
FINISH TIN PLATE		DRN BY BOONE	DATE 2.22.07
		APP'D RH	SCALE 6X
TOLERANCES DECIMAL ANGULAR UNLESS OTHERWISE SPECIFIED	INCH [MM] $\pm .005$ [ $\pm 0.13$ ] $\pm 1^\circ$	CODE C	DWG NO. 1369-

DATE	DESCRIPTION	REV.

# Mouser Electronics

Authorized Distributor

Click to View Pricing, Inventory, Delivery & Lifecycle Information:

[Keystone Electronics:](#)

[1369-1](#)