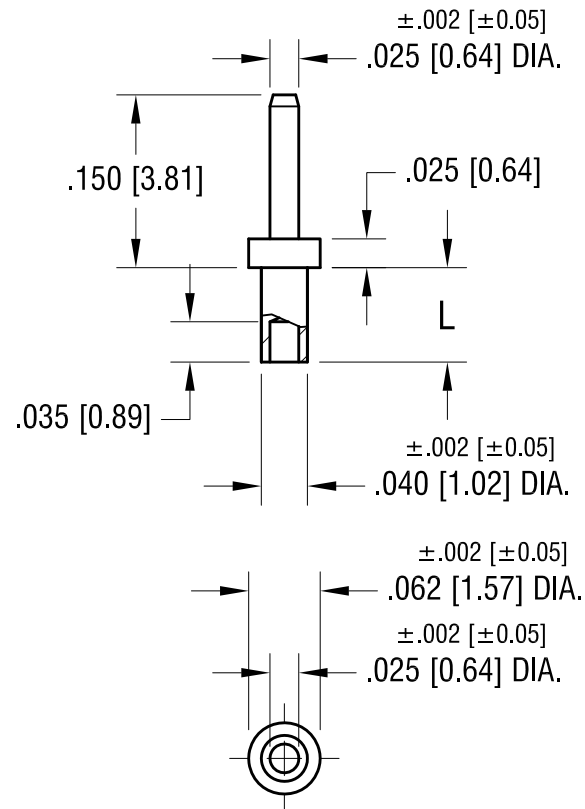


ACTUAL SIZE
P/N 1368-2



NOTE:

1. MOUNTING HOLE .043 [1.09] DIA.

PART NO.	'L' DIM.
1368-1	.051 [1.30]
1368-2	.082 [2.08]
1368-3	.113 [2.87]

6.6.16	SPLIT C/M DRAWING, ECN 16-064	A
DATE	DESCRIPTION	REV.

KEYSTONE ELECTRONICS CORP.			
www.keyelco.com • NEW HYDE PARK, NY 11040 • Tel (516) 328-7500			
PART NAME			
MICRO PIN, SWAGE MOUNT			
MATERIAL			
BRASS			
FINISH		DRN BY	DATE
GOLD PLATE		BOONE	2.22.07
		APP'D	SCALE
		RH	6X
TOLERANCES	INCH [MM]	CODE	DWG NO.
DECIMAL	± .005 [± 0.13]	C	1368-
ANGULAR	± 1°		
UNLESS OTHERWISE SPECIFIED			

Mouser Electronics

Authorized Distributor

Click to View Pricing, Inventory, Delivery & Lifecycle Information:

[Keystone Electronics:](#)

[1368-1](#)