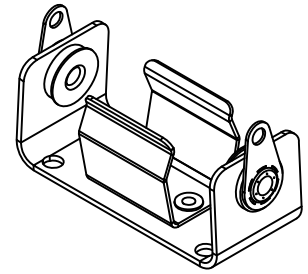
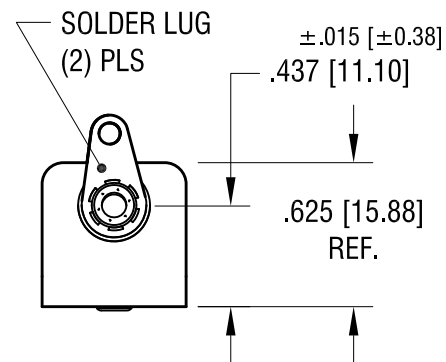
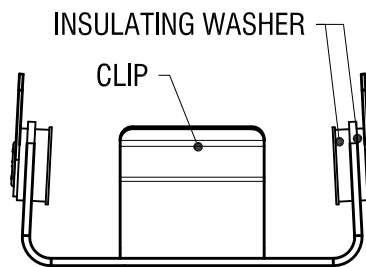
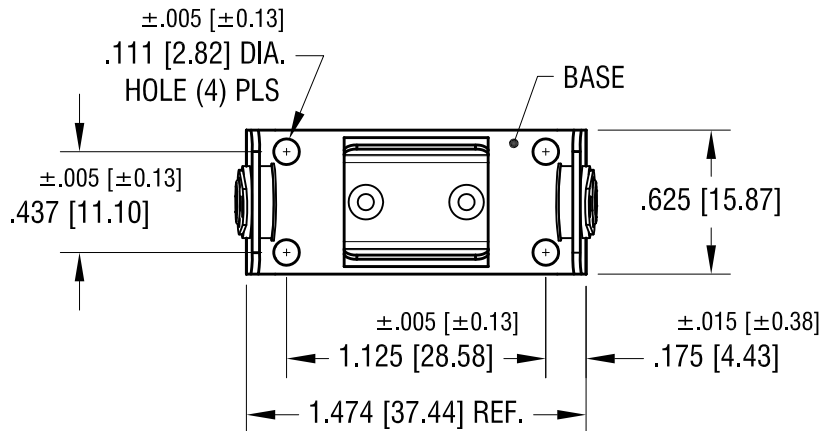


ACTUAL SIZE



Technical drawing of a mechanical part showing dimensions and tolerances. The drawing includes a central rectangular feature with a dashed outline, indicating a hidden internal feature. The overall length is 1.125 [28.58]. The width of the central feature is .437 [11.10]. The thickness of the part is .437 [11.10]. The drawing also shows two circular features on the left and right sides, each with a diameter of .118 [3.00] (4) PLS and .156 [3.96] (2) PLS. The central feature has a diameter of .156 [3.96] (2) PLS. The drawing includes various tolerances such as $\pm .002$ [$\pm .05$] and $\pm .005$ [$\pm .13$]. The text 'CLEARANCE HOLE' is present, indicating the nature of the central feature.



1. BASE: MAT'L - .032 [.81] TH'K ALUMINUM
2. CLIP: MAT'L - .020 [.50] TH'K ALUMINUM
3. SOLDER LUG: MAT'L - BRASS
FINISH - TIN PLATE

www.keyelco.com • NEW HYDE PARK NY 11040 • Tel (516)328-7500

BATTERY HOLDER, '2/3 A'

AS NOTED

AS NOTED

BOONE

12.11.81

MR

1.2X

INCH	[MM]
------	------

DECIMAL	$\pm .010$	$[\pm 0.25]$
---------	------------	--------------

ANGULAR $\pm 1^\circ$
UNLESS OTHERWISE SPECIFIED

DWG NO.	
---------	--

C

132

3.12.07	CHANGE AS PER ECN 07-012
---------	--------------------------

C

DATE _____

DESCRIPTION

REV.

Mouser Electronics

Authorized Distributor

Click to View Pricing, Inventory, Delivery & Lifecycle Information:

[Keystone Electronics:](#)