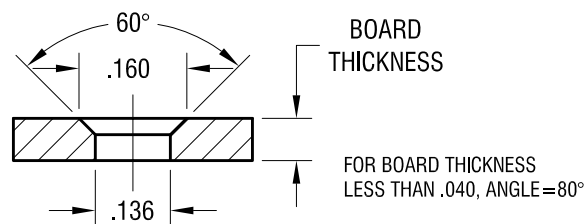
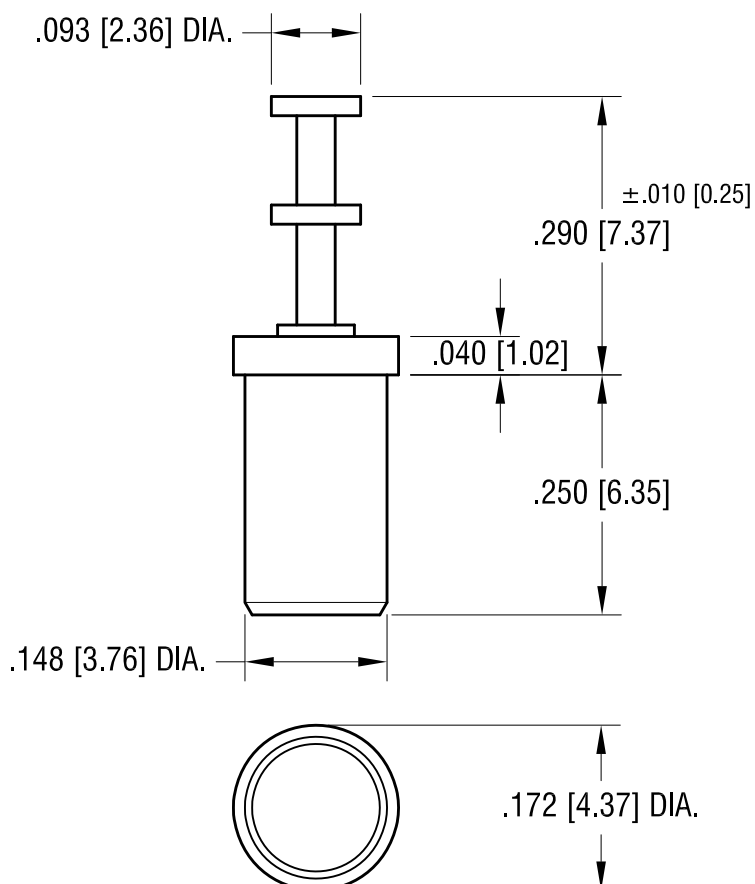


# MOUNTING DETAIL



THIS DOCUMENT IS THE PROPERTY OF KEYSTONE ELECTRONICS CORP. AND SHALL NOT BE REPRODUCED, DISTRIBUTED OR USED AS A BASIS FOR MANUFACTURE WITHOUT PRIOR WRITTEN PERMISSION FROM KEYSTONE ELECTRONICS CORP.

## ACTUAL SIZE



## NOTES:

- PIN: MAT'L - BRASS  
FINISH: TIN
- BUSHING: MAT'L - PTFE (TEFLON)  
COLOR: WHITE

## KEYSTONE ELECTRONICS CORP.

www.keyelco.com • ASTORIA, N.Y. 11105-2017 • Tel (718) 956-8900

PART NAME

PTFE INSULATED TERMINAL

MATERIAL

AS NOTED

FINISH

AS NOTED

DRN BY

N.T.

DATE

11.06.07

APP'D

LN

SCALE

5X

TOLERANCES

INCH

[MM]

DECIMAL  $\pm .005$  [ $\pm 0.13$ ]

ANGULAR  $\pm 1^\circ$

UNLESS OTHERWISE SPECIFIED

CODE

C

DWG NO.

11307

DATE

DESCRIPTION

REV.

# Mouser Electronics

Authorized Distributor

Click to View Pricing, Inventory, Delivery & Lifecycle Information:

[Keystone Electronics:](#)

[11307](#)