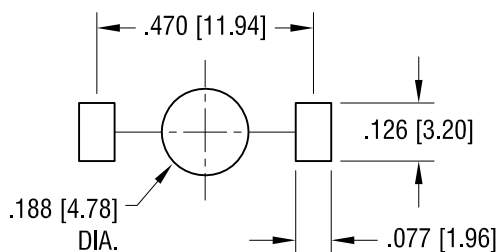
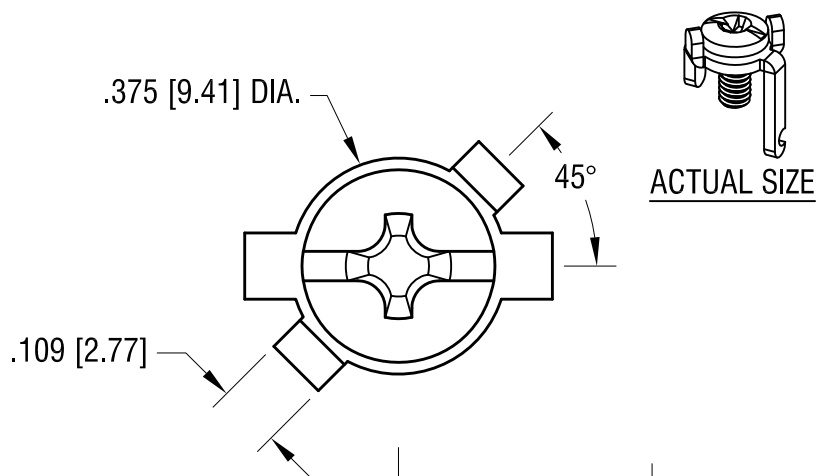


THIS DOCUMENT IS THE PROPERTY OF
KEYSTONE ELECTRONICS CORP. AND
SHALL NOT BE REPRODUCED, DISTRIBUTED
OR USED AS A BASIS FOR MANUFACTURE
WITHOUT PRIOR WRITTEN PERMISSION
FROM KEYSTONE ELECTRONICS CORP.

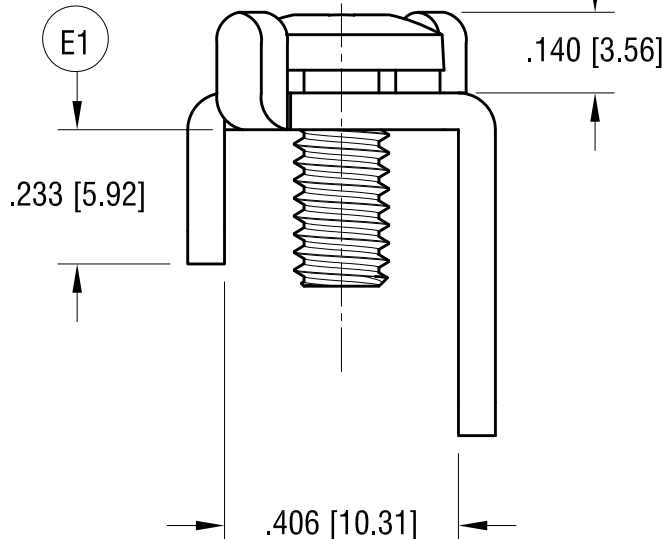
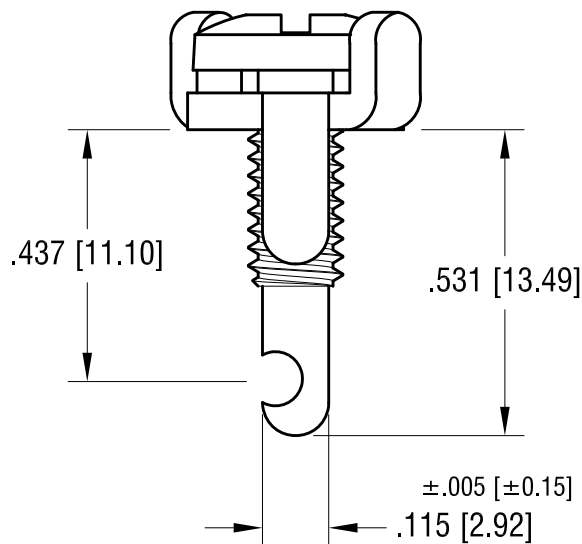
MOUNTING DETAIL



.375 [9.41] DIA.



ACTUAL SIZE



NOTE:

1. TERMINAL:
MAT'L - .064 [1.63] TH'K BRASS, MATTE TIN PLATE
2. SCREW : ONE (1) 8-32 x 3/8 L., CAPTIVATED
MAT'L - BRASS, NICKEL PLATE

| | | |
|---------|--|------|
| 4.12.23 | E1 WAS .297±.010 CHANGE AS PER ECN 23-053 | E |
| 5.12.05 | CHANGE AS PER ECN 05-25 | D |
| DATE | DESCRIPTION | REV. |

| KEYSTONE ELECTRONICS CORP. | | | |
|---|--|----------------|--|
| www.keyelco.com • ASTORIA, N.Y. 11105-2017 • Tel (718) 956-8900 | | | |
| PART NAME | | SCREW TERMINAL | |
| MATERIAL | | AS NOTED | |
| FINISH | | AS NOTED | |
| TOLERANCES | | CODE | |
| DECIMAL | | C | |
| ANGULAR | | DWG NO. | |
| UNLESS OTHERWISE SPECIFIED | | 1209 | |

Mouser Electronics

Authorized Distributor

Click to View Pricing, Inventory, Delivery & Lifecycle Information:

[Keystone Electronics:](#)

[1209](#)