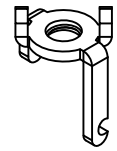
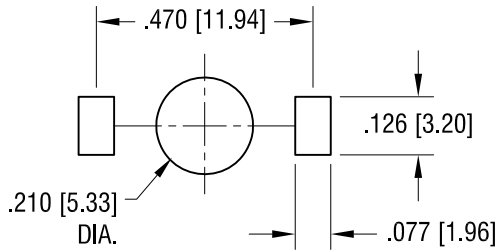
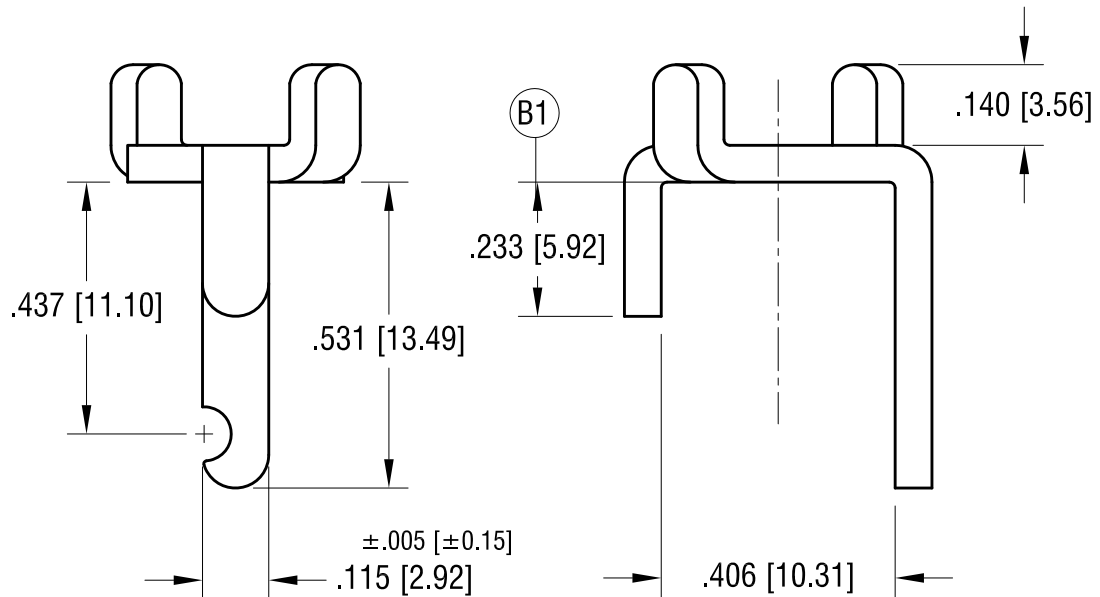
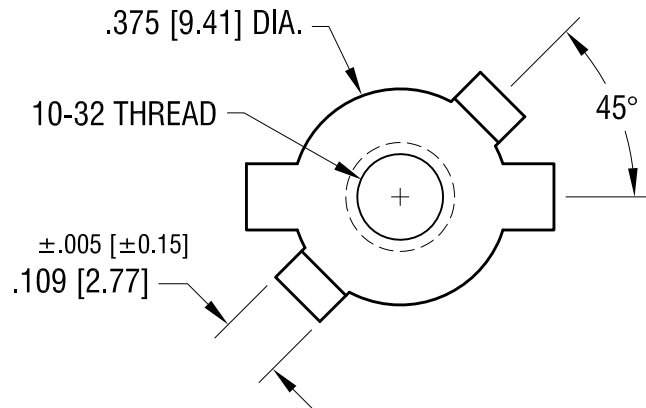


THIS DOCUMENT IS THE PROPERTY OF
KEYSTONE ELECTRONICS CORP. AND
SHALL NOT BE REPRODUCED, DISTRIBUTED
OR USED AS A BASIS FOR MANUFACTURE
WITHOUT PRIOR WRITTEN PERMISSION
FROM KEYSTONE ELECTRONICS CORP.

MOUNTING DETAIL



ACTUAL SIZE



KEYSTONE ELECTRONICS CORP.

www.keyelco.com • NEW HYDE PARK NY 11040 • Tel (516)328-7500

PART NAME

SCREW TERMINAL (10-32 THD)

MATERIAL

.064 [1.63] TH'K BRASS

FINISH

MATTE TIN PLATE

DRN BY

BOONE

DATE

11.08.04

APP'D

RH

SCALE

3X

TOLERANCES

INCH [MM]

DECIMAL

±.010 [±0.25]

ANGULAR ± 2°

UNLESS OTHERWISE SPECIFIED

CODE

C

DWG NO.

1206

4.12.23

B1 WAS .297±.010
CHANGE AS PER ECN 23-051

B

7.15.09

FINISH WAS TIN PLATE
CHANGE AS PER ECN 09-103

A

DATE

DESCRIPTION

REV.

Mouser Electronics

Authorized Distributor

Click to View Pricing, Inventory, Delivery & Lifecycle Information:

[Keystone Electronics:](#)

[1206](#)