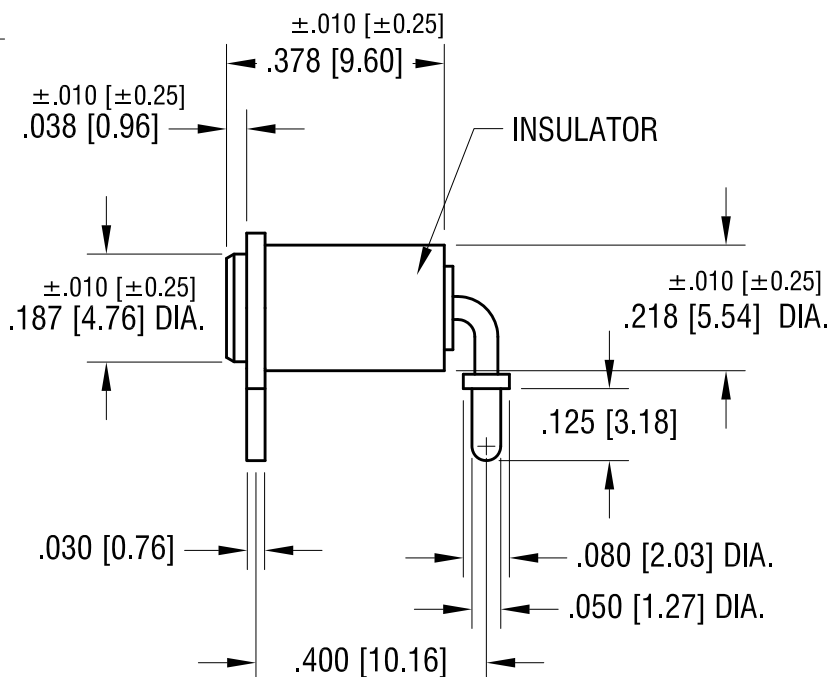
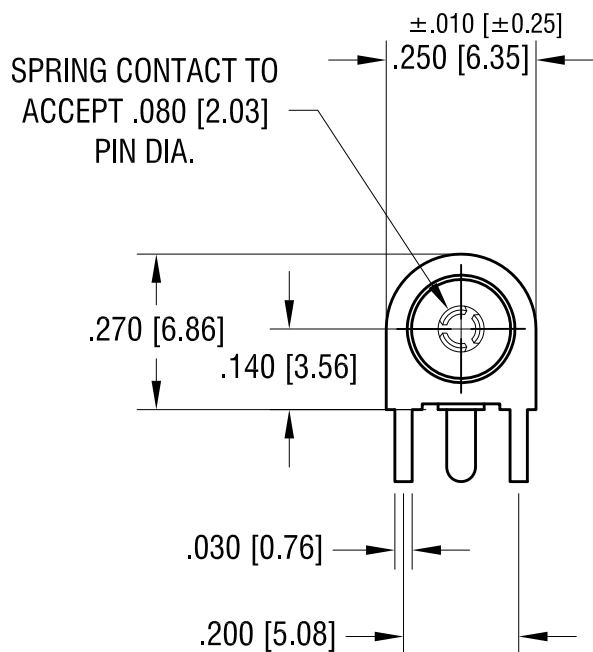
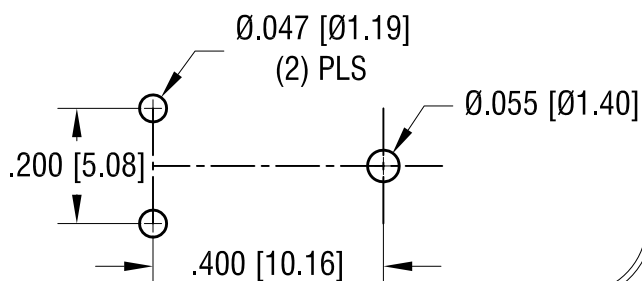


THIS DOCUMENT IS THE PROPERTY OF
KEYSTONE ELECTRONICS CORP. AND
SHALL NOT BE REPRODUCED, DISTRIBUTED
OR USED AS A BASIS FOR MANUFACTURE
WITHOUT PRIOR WRITTEN PERMISSION
FROM KEYSTONE ELECTRONICS CORP.



1. TERMINAL JACK: MAT'L - BERYLLIUM COPPER (QQ-C-533)
2. BUSHING: MAT'L - PTFE
3. MOUNTING BRACKET: MAT'L - BRASS

PART NO.	COLOR
11014	WHITE
11014-R	RED
11014-B	BLACK

www.kevelco.com • NEW HYDE PARK NY 11040 • Tel (516)328-7500

HORIZONTAL INSULATED TEST JACK

AS NOTED

GOLD PLATE

7407

3X

DWG NO

○

ANGULAR $\pm 1^\circ$
UNLESS OTHERWISE SPECIFIED

11014-

10.11.11 CHANGE AS PER ECN 11-132

A

DATE _____

DESCRIPTION

REV.

Mouser Electronics

Authorized Distributor

Click to View Pricing, Inventory, Delivery & Lifecycle Information:

[Keystone Electronics:](#)

[11014-R](#)