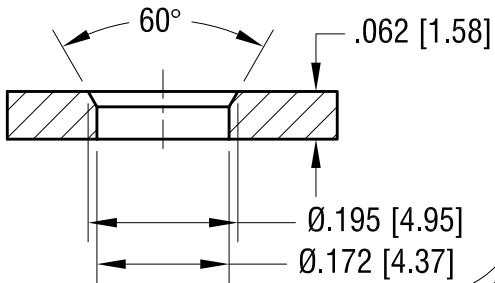
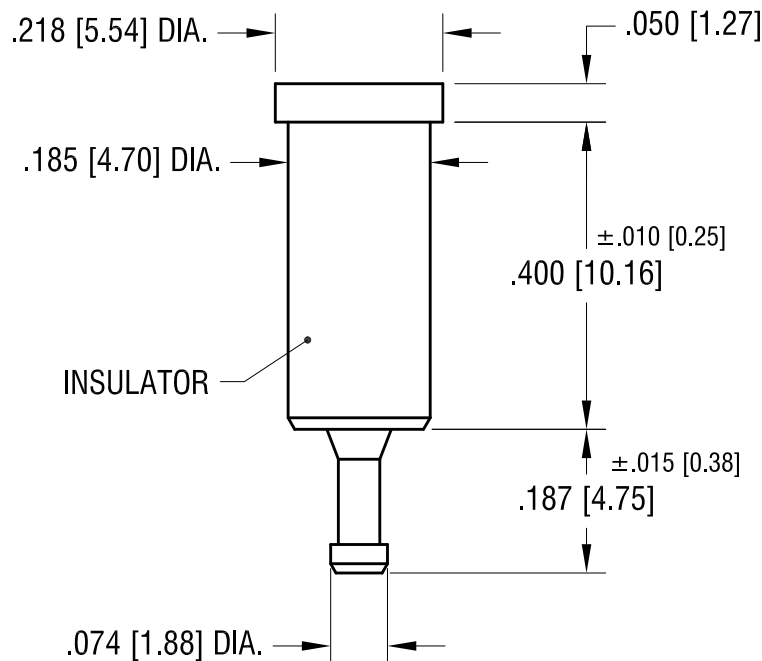
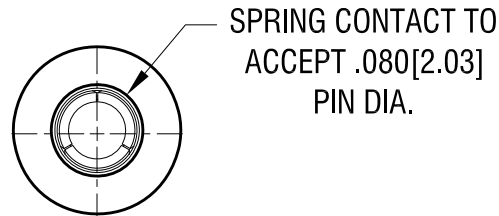
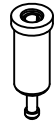


THIS DOCUMENT IS THE PROPERTY OF
KEYSTONE ELECTRONICS CORP. AND
SHALL NOT BE REPRODUCED, DISTRIBUTED
OR USED AS A BASIS FOR MANUFACTURE
WITHOUT PRIOR WRITTEN PERMISSION
FROM KEYSTONE ELECTRONICS CORP.

MTG HOLE DETAIL



ACTUAL SIZE



NOTES:

- 1.PIN-BODY : MAT'L -BRASS
2. JACK-CONTACT: MAT'L- .010 [0.25] BERYLLIUM COPPER
3. BUSHING: MAT'L - PTFE (SEE COLOR CHART)

PART NO.	COLOR
11009	WHITE
11009-R	RED
11009-B	BLACK

3.29.17	CHANGE AS PER ECN 17-027	B
11.17.08	CHANGE AS PER ECN 08-177	A
DATE	DESCRIPTION	REV.

KEYSTONE ELECTRONICS CORP.			
www.keyelco.com • NEW HYDE PARK, NY 11040 • Tel (516) 328-7500			
PART NAME			
PTFE INSULATED TEST JACK			
MATERIAL			
AS NOTED			
FINISH		DRN BY	DATE
GOLD PLATE		NT	7.01.07
		APP'D	SCALE
		RH	4X
TOLERANCES	INCH [MM]	CODE	DWG NO.
DECIMAL	± .005 [± 0.13]	C	11009-
ANGULAR	± 1°		
UNLESS OTHERWISE SPECIFIED			

Mouser Electronics

Authorized Distributor

Click to View Pricing, Inventory, Delivery & Lifecycle Information:

[Keystone Electronics:](#)

[11009-B](#)