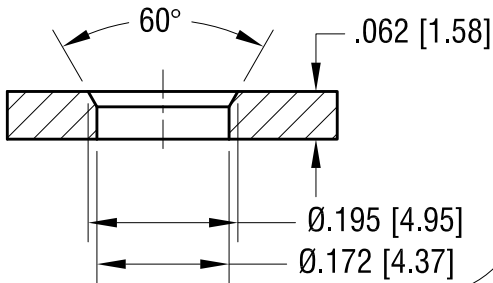
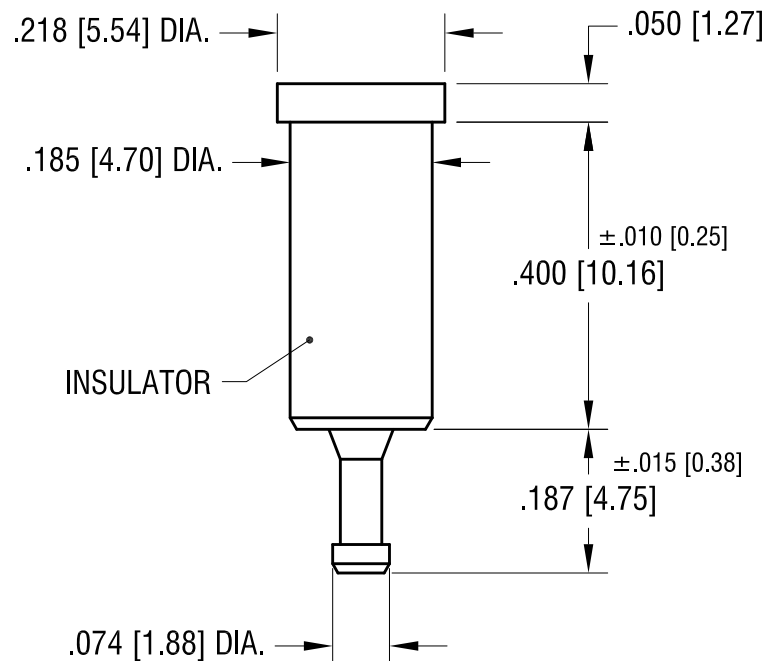
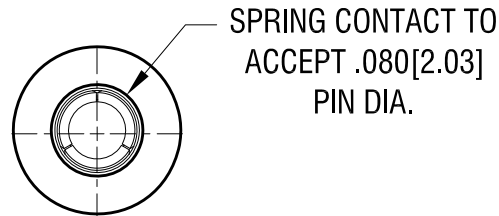
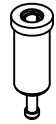


THIS DOCUMENT IS THE PROPERTY OF
KEYSTONE ELECTRONICS CORP. AND
SHALL NOT BE REPRODUCED, DISTRIBUTED
OR USED AS A BASIS FOR MANUFACTURE
WITHOUT PRIOR WRITTEN PERMISSION
FROM KEYSTONE ELECTRONICS CORP.

MTG HOLE DETAIL



ACTUAL SIZE



NOTES:

- 1.PIN-BODY : MAT'L -BRASS
2. JACK-CONTACT: MAT'L- .010 [0.25] BERYLLIUM COPPER
3. BUSHING: MAT'L - PTFE (SEE COLOR CHART)

| PART NO. | COLOR |
|----------|-------|
| 11009 | WHITE |
| 11009-R | RED |
| 11009-B | BLACK |

| | | |
|----------|--------------------------|------|
| 3.29.17 | CHANGE AS PER ECN 17-027 | B |
| 11.17.08 | CHANGE AS PER ECN 08-177 | A |
| DATE | DESCRIPTION | REV. |

| KEYSTONE ELECTRONICS CORP. | | | |
|--|-----------------|--------|---------|
| www.keyelco.com • NEW HYDE PARK, NY 11040 • Tel (516) 328-7500 | | | |
| PART NAME | | | |
| PTFE INSULATED TEST JACK | | | |
| MATERIAL | | | |
| AS NOTED | | | |
| FINISH | | DRN BY | DATE |
| GOLD PLATE | | NT | 7.01.07 |
| | | APP'D | SCALE |
| | | RH | 4X |
| TOLERANCES | INCH [MM] | CODE | DWG NO. |
| DECIMAL | ± .005 [± 0.13] | C | 11009- |
| ANGULAR | ± 1° | | |
| UNLESS OTHERWISE SPECIFIED | | | |

Mouser Electronics

Authorized Distributor

Click to View Pricing, Inventory, Delivery & Lifecycle Information:

[Keystone Electronics:](#)

[11009-R](#)