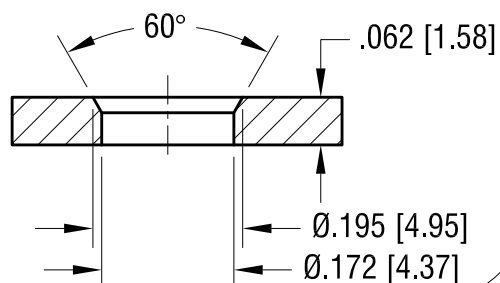


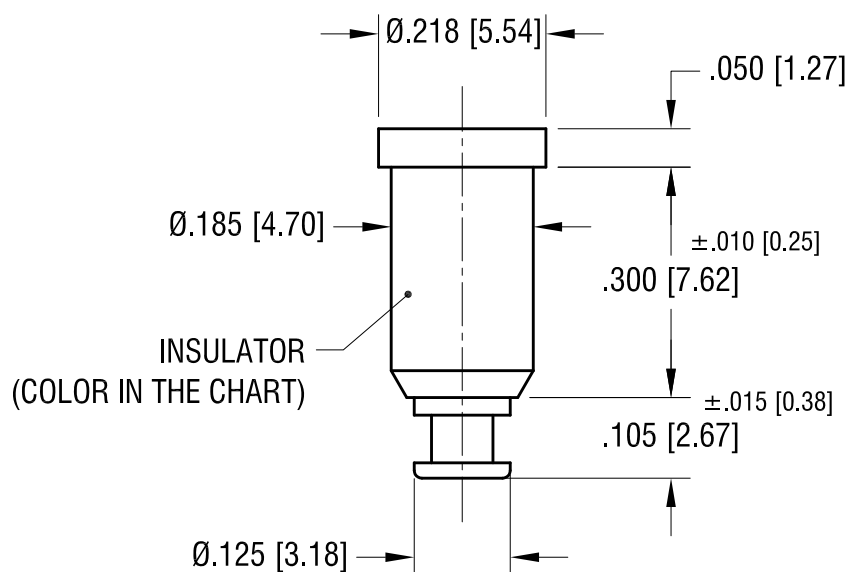
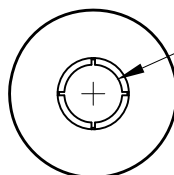
ACTUAL SIZE



MTG HOLE DETAIL



SPRING CONTACT TO
ACCEPT .080[2.03]
PIN DIA.



NOTES:

1. TERMINAL JACK : MAT'L - BERYLLIUM COPPER (QQ-C-533)

FINISH: GOLD PLATE

2. BUSHING: MAT'L - PTFE

PART NO.	COLOR
11005	WHITE
11005-R	RED
11005-B	BLACK

KEYSTONE ELECTRONICS CORP.

www.keyelco.com • NEW HYDE PARK NY 11040 • Tel (516)328-7500

PART NAME

PTFE INSULATED TERMINAL JACK

MATERIAL

AS NOTED

FINISH

AS NOTED

DRN BY

NT

DATE

7.10.07

APP'D

RH

SCALE

4X

11.17.08 CHANGE AS PER ECN 08-177

A

TOLERANCES INCH [MM]
DECIMAL ± .005 [± 0.13]
ANGULAR ± 1°
UNLESS OTHERWISE SPECIFIED

CODE

DWG NO.

C

11005-

DATE

DESCRIPTION

REV.

Mouser Electronics

Authorized Distributor

Click to View Pricing, Inventory, Delivery & Lifecycle Information:

[Keystone Electronics:](#)

[11005-R](#)