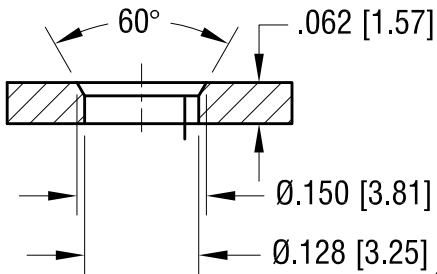


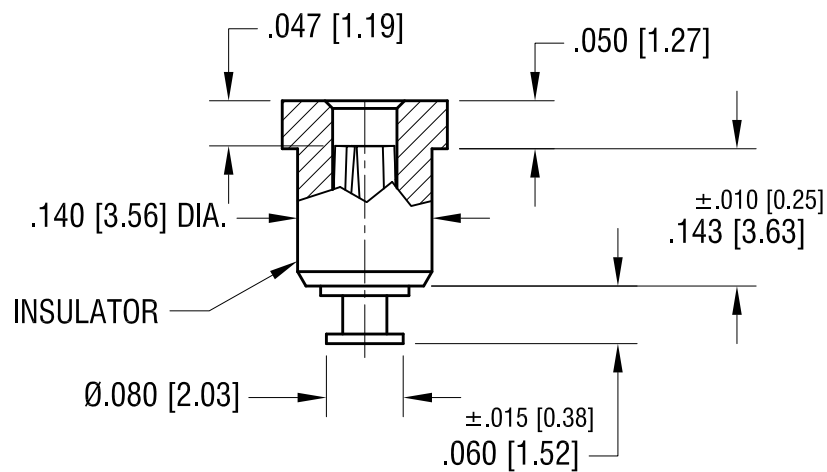
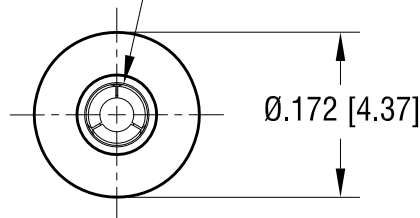
MTG HOLE DETAIL



ACTUAL SIZE



SPRING CONTACT TO
ACCEPT .040[1.02]
PIN DIA.



PART NO.	COLOR
11003	WHITE
11003-R	RED
11003-B	BLACK

NOTES:

1. TERMINAL JACK : MAT'L - BERYLLIUM COPPER (QQ-C-533)
2. BUSHING: MAT'L - PTFE

KEYSTONE ELECTRONICS CORP.

www.keyelco.com • NEW HYDE PARK NY 11040 • Tel (516)328-7500

PART NAME

PTFE INSULATED TEST JACK

MATERIAL

AS NOTED

FINISH

GOLD PLATE

DRN BY

NT

DATE

11.21.07

APP'D

RH

SCALE

5X

TOLERANCES

INCH [MM]

DECIMAL

± .005 [± 0.13]

ANGULAR

± 1°

UNLESS OTHERWISE SPECIFIED

CODE

C

DWG NO.

11003-

10.19.10

CHANGE AS PER ECN 10-072

B

7.10.07

CHANGE AS PER ECN 08-177

A

DATE

DESCRIPTION

REV.

Mouser Electronics

Authorized Distributor

Click to View Pricing, Inventory, Delivery & Lifecycle Information:

[Keystone Electronics:](#)

[11003-B](#)