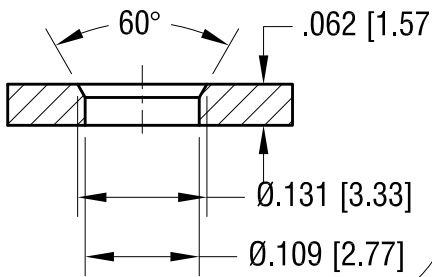


THIS DOCUMENT IS THE PROPERTY OF
KEYSTONE ELECTRONICS CORP. AND
SHALL NOT BE REPRODUCED, DISTRIBUTED
OR USED AS A BASIS FOR MANUFACTURE
WITHOUT PRIOR WRITTEN PERMISSION
FROM KEYSTONE ELECTRONICS CORP.

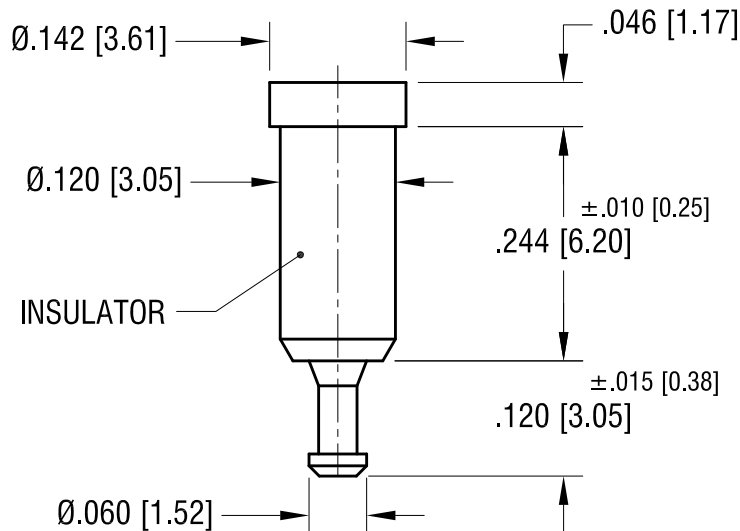
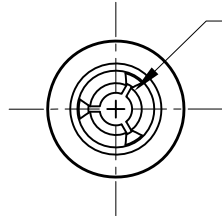
ACTUAL SIZE



MTG HOLE DETAIL



SPRING CONTACT TO
ACCEPT Ø.040 [Ø1.02] PIN



NOTES:

1. TERMINAL JACK : MAT'L - BERYLLIUM COPPER (QQ-C-533)
FINISH- GOLD PLATED
2. BUSHING: MAT'L - PTFE
(SEE COLOR CHART)

PART NO.	COLOR
11001	WHITE
11001-R	RED
11001-B	BLACK

11.17.08	CHANGE AS PER ECN 08-177	A
DATE	DESCRIPTION	REV.

KEYSTONE ELECTRONICS CORP.			
www.keyelco.com • NEW HYDE PARK, NY 11040 • Tel (516) 328-7500			
PART NAME PTFE INSULATED TEST JACK			
MATERIAL AS NOTED			
FINISH AS NOTED		DRN BY NT	DATE 7.10.07
		APP'D RH	SCALE 5X
TOLERANCES DECIMAL ANGULAR	INCH ± .005 ± 1°	[MM] [± 0.13]	CODE C
UNLESS OTHERWISE SPECIFIED			DWG NO. 11001-

Mouser Electronics

Authorized Distributor

Click to View Pricing, Inventory, Delivery & Lifecycle Information:

[Keystone Electronics:](#)

[11001](#)