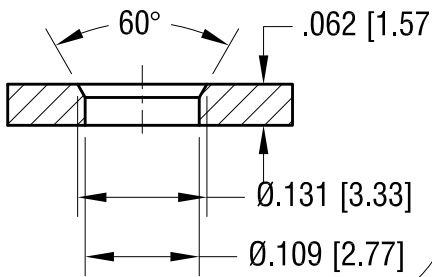


THIS DOCUMENT IS THE PROPERTY OF
KEYSTONE ELECTRONICS CORP. AND
SHALL NOT BE REPRODUCED, DISTRIBUTED
OR USED AS A BASIS FOR MANUFACTURE
WITHOUT PRIOR WRITTEN PERMISSION
FROM KEYSTONE ELECTRONICS CORP.

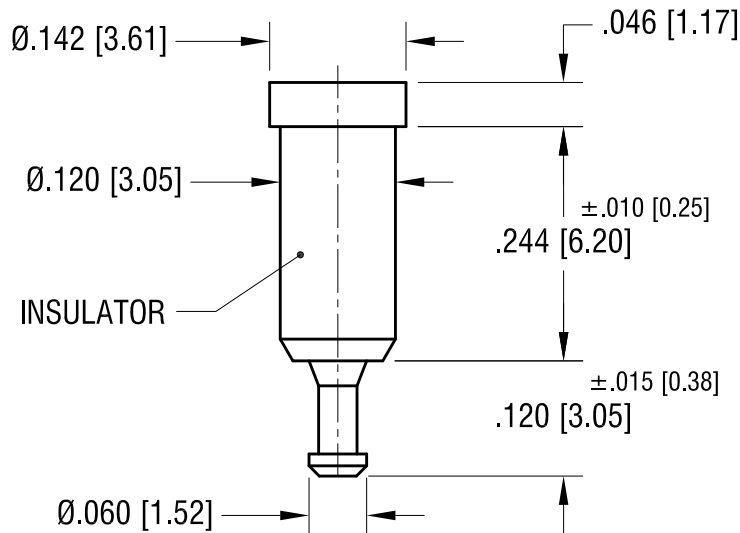
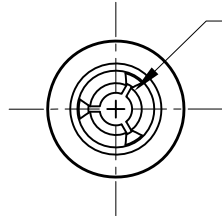
ACTUAL SIZE



MTG HOLE DETAIL



SPRING CONTACT TO
ACCEPT Ø.040 [Ø1.02] PIN



INSULATOR

NOTES:

1. TERMINAL JACK : MAT'L - BERYLLIUM COPPER (QQ-C-533)
FINISH- GOLD PLATED
2. BUSHING: MAT'L - PTFE
(SEE COLOR CHART)

PART NO.	COLOR
11001	WHITE
11001-R	RED
11001-B	BLACK

KEYSTONE ELECTRONICS CORP.

www.keyelco.com • NEW HYDE PARK, NY 11040 • Tel (516) 328-7500

PART NAME

PTFE INSULATED TEST JACK

MATERIAL

AS NOTED

FINISH

AS NOTED

DRN BY

NT

DATE

7.10.07

APP'D

RH

SCALE

5X

11.17.08 CHANGE AS PER ECN 08-177

A

TOLERANCES

INCH [MM]

DECIMAL ±.005 [±0.13]

ANGULAR ± 1°

UNLESS OTHERWISE SPECIFIED

CODE

DWG NO.

C

11001-

DATE

DESCRIPTION

REV.

Mouser Electronics

Authorized Distributor

Click to View Pricing, Inventory, Delivery & Lifecycle Information:

[Keystone Electronics:](#)

[11001-R](#)