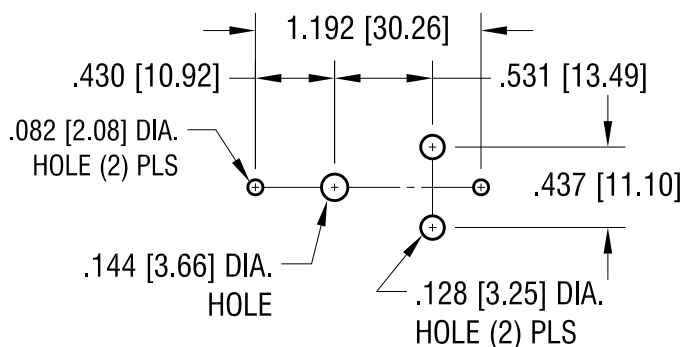
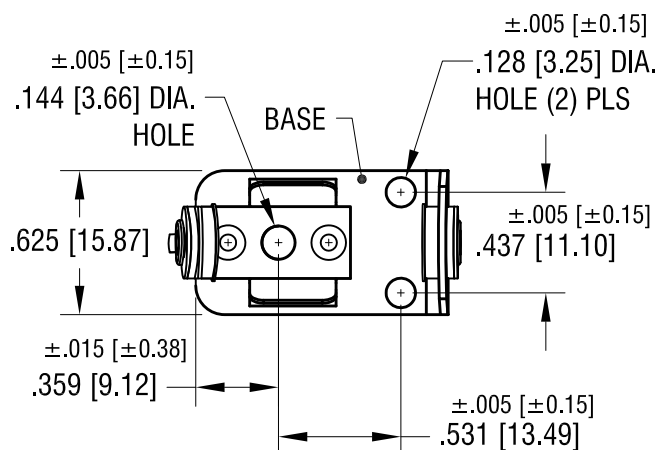
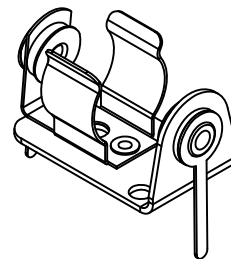


THIS DOCUMENT IS THE PROPERTY OF
KEYSTONE ELECTRONICS CORP. AND
SHALL NOT BE REPRODUCED, DISTRIBUTED
OR USED AS A BASIS FOR MANUFACTURE
WITHOUT PRIOR WRITTEN PERMISSION
FROM KEYSTONE ELECTRONICS CORP.

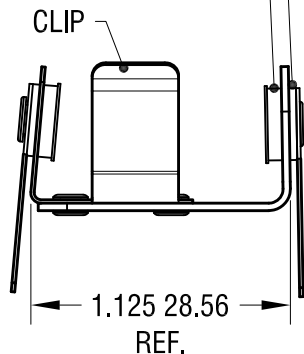
MOUNTING DETAIL



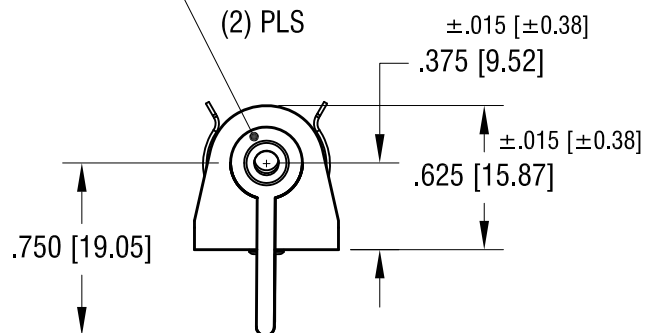
ACTUAL SIZE



INSULATING WASHER



TERMINAL LUG (2) PLS



NOTES:

1. BASE: MAT'L - .032 [.81] TH'K STEEL
FINISH - NICKEL PLATE

CLIP: MAT'L - .015 [.38] TH'K STEEL
FINISH - NICKEL PLATE

TERMINAL LUG: MAT'L - .020 [.50] TH'K BRASS
FINISH - TIN PLATE

KEYSTONE ELECTRONICS CORP.

www.keyelco.com • ASTORIA, N.Y. 11105-2017 • Tel (718) 956-8900

PART NAME

INSULATED BATTERY HOLDER, PC '1/2 AA'

MATERIAL

AS NOTED

FINISH

AS NOTED

DRN BY

BOONE

DATE

6.4.07

APP'D

LN

SCALE

1.2X

TOLERANCES

INCH [MM]

DECIMAL

±.010 [±0.25]

ANGULAR

± 1°

UNLESS OTHERWISE SPECIFIED

CODE

DWG NO.

C

2103

12.10.13 CHANGE AS PER ECN 13-113

A

DATE

DESCRIPTION

REV.

Mouser Electronics

Authorized Distributor

Click to View Pricing, Inventory, Delivery & Lifecycle Information:

[Keystone Electronics:](#)

[2103](#)