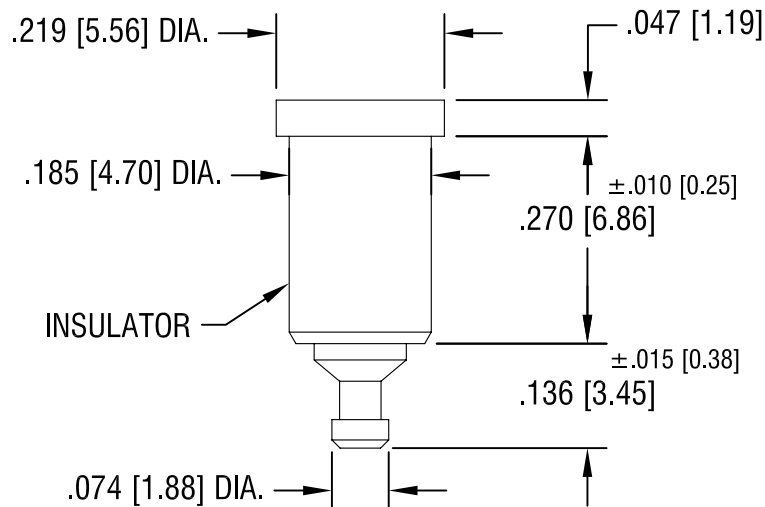
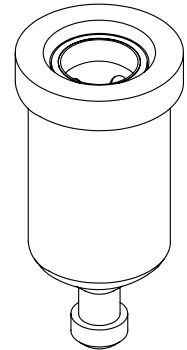
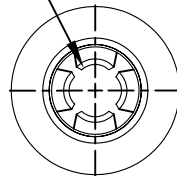


SPRING CONTACT TO
ACCEPT .080[2.03]
PIN DIA.



NOTES:

1. SPRING: MAT'L - BERYLLIUM COPPER (QQ-C-533)
2. BODY: MAT'L - BRASS
3. BUSHING: MAT'L - PTFE

PART NO.	COLOR
11010	WHITE
11010-R	RED
11010-B	BLACK

11.17.08	CHANGE AS PER ECN 08-177	A
DATE	DESCRIPTION	REV.

KEYSTONE ELECTRONICS CORP.			
ASTORIA, N.Y. 11105-2017			
PART NAME			
PTFE INSULATED TEST JACK			
MATERIAL			
AS NOTED			
FINISH GOLD PLATE		DRN BY N.T.	DATE 7.10.07
		APP'D LN	SCALE 4X
TOLERANCES INCH [MM]		CODE C/M	DWG NO. 11010-
DECIMAL ± .005 [± 0.15]			
ANGULAR ± 1°			
UNLESS OTHERWISE SPECIFIED			

Mouser Electronics

Authorized Distributor

Click to View Pricing, Inventory, Delivery & Lifecycle Information:

[Keystone Electronics:](#)

[11010](#)