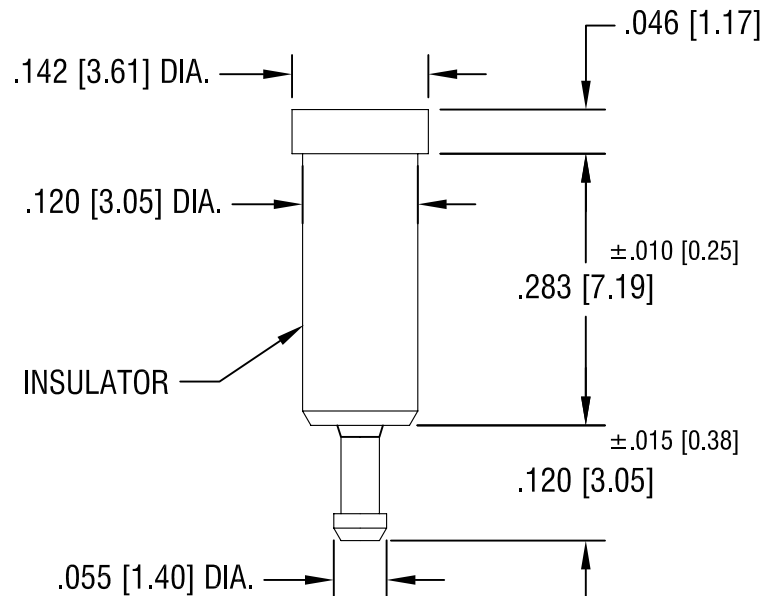
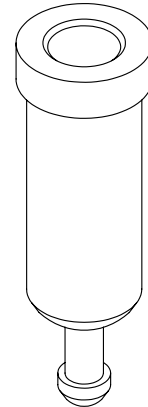
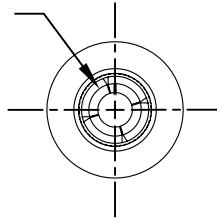


SPRING CONTACT TO  
ACCEPT .040 [1.02]  
PIN DIA.



NOTES:

1. TERMINAL JACK : MAT'L - BERYLLIUM COPPER (QQ-C-533)
2. BUSHING: MAT'L - PTFE

PART NO.	COLOR
11002	WHITE
11002-R	RED
11002-B	BLACK

11.17.08	CHANGE AS PER ECN 08-178	A
DATE	DESCRIPTION	REV.

KEYSTONE ELECTRONICS CORP.			
ASTORIA, N.Y. 11105-2017			
PART NAME			
PTFE INSULATED TEST JACK			
MATERIAL			
AS NOTED			
FINISH  GOLD PLATE		DRN BY	DATE
		N.T.	4.18.08
		APP'D	SCALE
		LN	5X
TOLERANCES INCH [MM]		CODE	DWG NO.
DECIMAL ± .005 [± 0.15 ]		C	11002-
ANGULAR ± 1°			
UNLESS OTHERWISE SPECIFIED			

# Mouser Electronics

Authorized Distributor

Click to View Pricing, Inventory, Delivery & Lifecycle Information:

[Keystone Electronics:](#)

[11002](#)