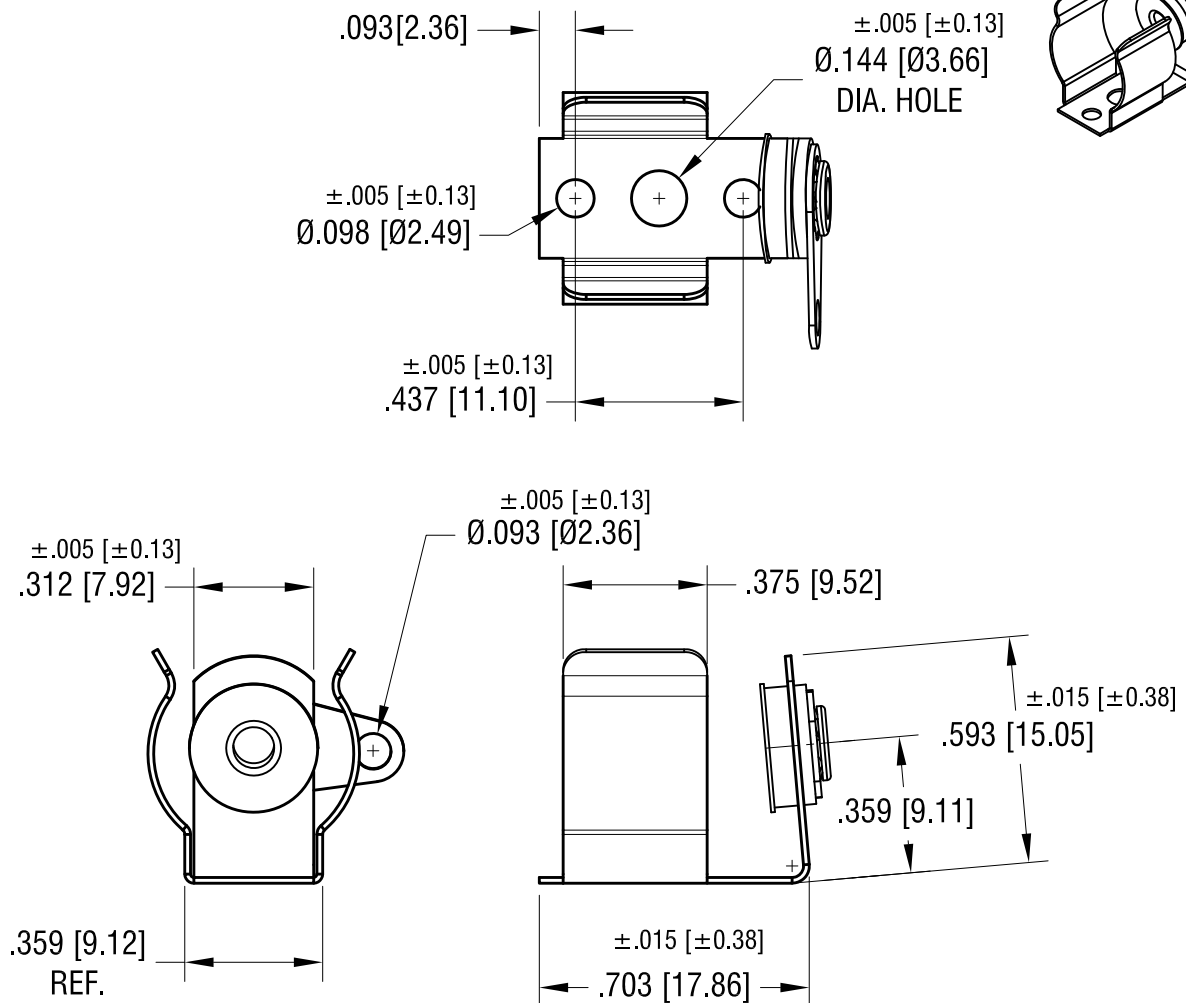


**ACTUAL SIZE**



**NOTE:**

1. CLIP: MAT'L-  $.015 [0.38]$  ANNEALED SPRING STEEL  
FINISH- NICKEL PLATE
2. CONTACT EYELET:  
BRASS, NICKEL PLATE
3. INSULATING WASHER:  
MAT'L- VULCANIZED FIBRE
4. LUG TERMINAL  
MAT'L- BRASS, MATTE TIN PLATED

9.28.98	CHANGE AS PER ECR 98-072	B
3.29.96	REVISED	A
DATE	DESCRIPTION	REV.

KEYSTONE ELECTRONICS CORP.			
www.keyelco.com • NEW HYDE PARK, NY 11040 • Tel (516) 328-7500			
PART NAME			
'AA' BATTERY CLIP			
MATERIAL			
AS NOTED			
FINISH		DRN BY	DATE
AS NOTED		BOONE	11.5.81
		APP'D	SCALE
		LN	2X
TOLERANCES	INCH [MM]	CODE	DWG NO.
DECIMAL	$\pm .010 [\pm 0.25]$	C	100
ANGULAR	$\pm 1^\circ$		
UNLESS OTHERWISE SPECIFIED			

# Mouser Electronics

Authorized Distributor

Click to View Pricing, Inventory, Delivery & Lifecycle Information:

[Keystone Electronics:](#)

[100](#)