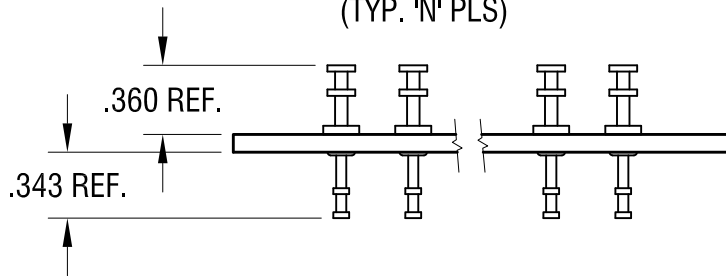


Technical drawing of a component showing dimensions and assembly instructions:

- Dimensions:**
  - Overall width:  $\pm .015$
  - Internal width:  $\pm .010$
  - Vertical distance from top edge to centerline:  $.187 \pm .015$
  - Horizontal distance between mounting points:  $.375$  TYP.
  - Bottom thickness:  $.500 \pm .015$
- Assembly Instructions:**
  - 1545-3 TERMINAL MOUNTED INTO .120 DIA. HOLE (TYP. 'N' PLS)**: Points to the terminal holes.
  - .120 DIA. HOLE (TYP. 2 PLS)**: Points to the circular holes.



PART NO.	'L' DIM.	'M' DIM.	'N' TERM.
604-1	1.125	.750	1
604-2	1.500	1.125	2
604-3	1.875	1.500	3
604-4	2.250	1.875	4
604-5	2.625	2.250	5
604-6	3.000	2.625	6
604-7	3.375	3.000	7
604-8	3.750	3.375	8
604-9	4.125	3.750	9
604-10	4.500	4.125	10

www.keyelco.com • ASTORIA, N.Y. 11105-2017 • Tel (718) 956-8900

## TURRET TERMINAL BOARD

.093 TH'K XP PHENOLIC

AS NOTED

BOONE

2.24.82

---

IN

---

1X

INCH	[MM]
------	------

DECIMAL  $\pm .005$  [ $\pm$  ]

ANGULAR  $\pm 1^\circ$   
UNLESS OTHERWISE SPECIFIED

DWG NO	
--------	--

604-1 - 604-10

6.16.05	CHANGE AS PER ECN 05-039	B
12.2.98	CHANGE AS PER ECR 98-087	A
DATE	DESCRIPTION	REV.

# Mouser Electronics

Authorized Distributor

Click to View Pricing, Inventory, Delivery & Lifecycle Information:

[Keystone Electronics:](#)

[604-9](#)