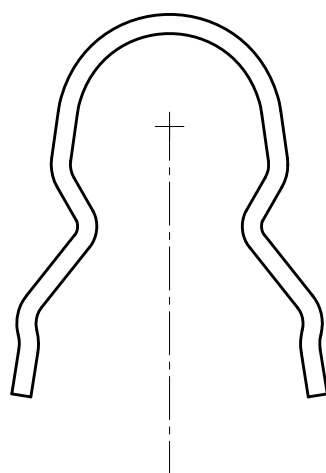
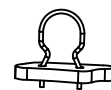
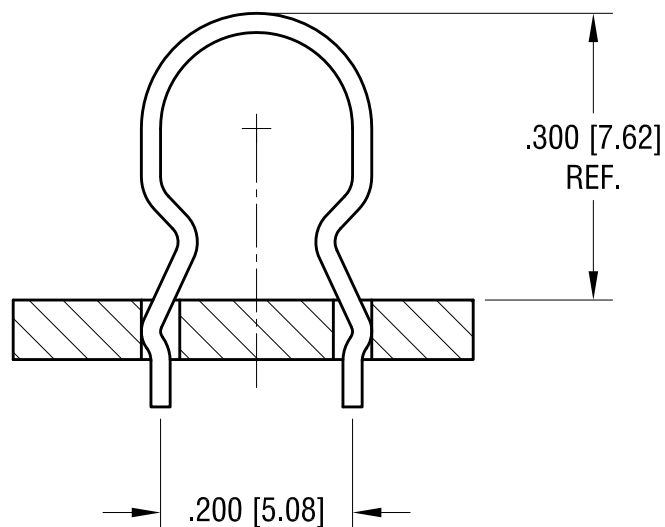


ACTUAL SIZE



SHOWN AS
SUPPLIED



SHOWN AS
INSTALLED INTO
TWO .040 [1.02] DIA
MOUNTING HOLE

| | | |
|---------|--------------------------|------|
| 4.4.14 | CHANGE AS PER ECN 14-041 | C |
| 1.02.14 | CHANGE AS PER ECN 14-006 | B |
| 5.14.13 | CHANGE AS PER ECN 13-040 | A |
| DATE | DESCRIPTION | REV. |

| | | | |
|---|------------------|--------|---------|
| KEYSTONE ELECTRONICS CORP. | | | |
| www.keyelco.com • ASTORIA, N.Y. 11105-2017 • Tel (718) 956-8900 | | | |
| PART NAME | | | |
| THRU-HOLE MOUNT TEST POINT | | | |
| MATERIAL | | | |
| .020 [0.50] DIA. PHOSPHOR BRONZE , 510 ALLOY | | | |
| FINISH | | DRN BY | DATE |
| SILVER PLATE | | NT | 3.08.13 |
| | | APP'D | SCALE |
| | | LN | 5X |
| TOLERANCES | INCH [MM] | CODE | DWG NO. |
| DECIMAL | ± .005 [± 0.13] | C | 5026 |
| ANGULAR | ± 1° | | |
| UNLESS OTHERWISE SPECIFIED | | | |

Mouser Electronics

Authorized Distributor

Click to View Pricing, Inventory, Delivery & Lifecycle Information:

[Keystone Electronics:](#)

[5026](#)