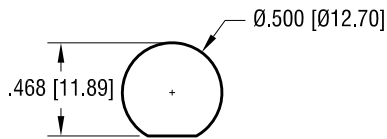
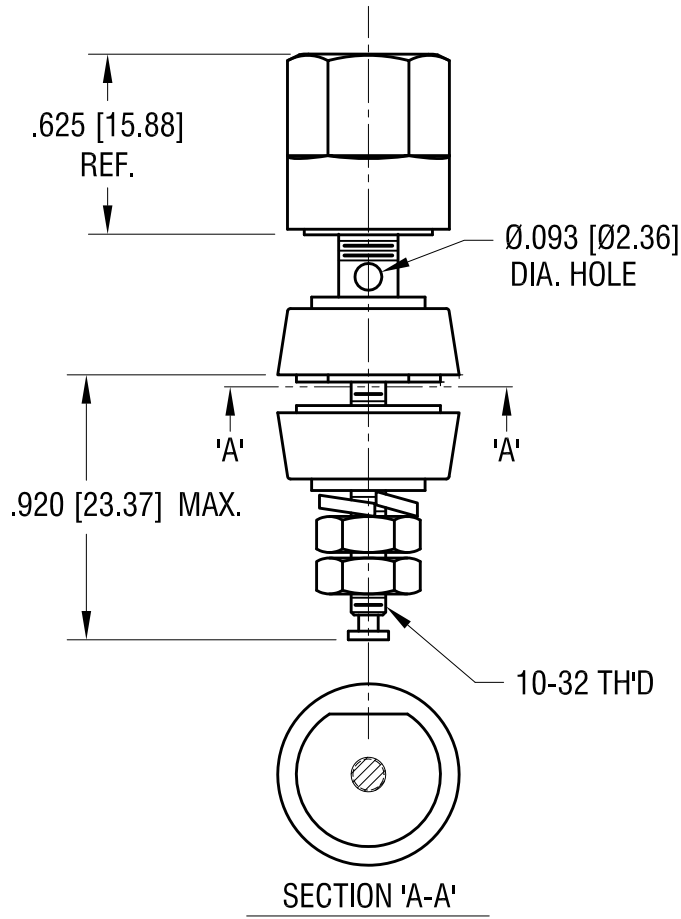


MOUNTING DETAIL

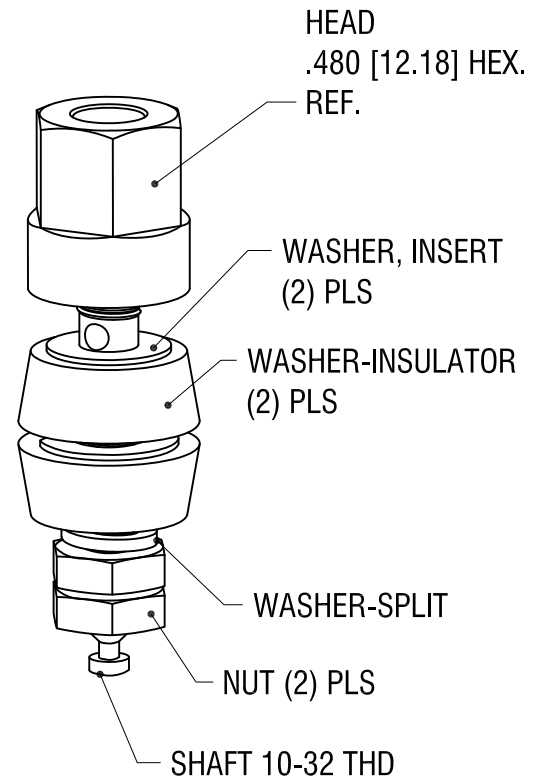


THIS DOCUMENT IS THE PROPERTY OF KEYSTONE ELECTRONICS CORP. AND SHALL NOT BE REPRODUCED, DISTRIBUTED OR USED AS A BASIS FOR MANUFACTURE WITHOUT PRIOR WRITTEN PERMISSION FROM KEYSTONE ELECTRONICS CORP.



SECTION 'A-A'

| P/N | TH'D | COLOR |
|------|-------|-------|
| 7016 | 10-32 | RED |
| 7017 | 10-32 | BLACK |



| DESCRIPTION | MAT'L | FINISH |
|-------------------|-------|----------|
| HEAD | NYLON | - |
| WASHER, INSULATOR | NYLON | - |
| WASHER, INSERT | BRASS | GOLD PL. |
| WASHER, SPLIT | BRASS | GOLD PL. |
| NUT | BRASS | GOLD PL. |
| SHAFT 10-32 TH'D | BRASS | GOLD PL. |

KEYSTONE ELECTRONICS CORP.

www.keyelco.com • ASTORIA, N.Y. 11105-2017 • Tel (718) 956-8900

PART NAME

STANDARD 'HEX' BINDING POST

MATERIAL

AS NOTED

FINISH

AS NOTED

DRN BY

BOONE

DATE

11.17.93

APP'D

LN

SCALE

X

TOLERANCES

INCH

[MM]

DECIMAL

$\pm .005$ [± 0.13]

ANGULAR

$\pm 1^\circ$

UNLESS OTHERWISE SPECIFIED

CODE

C

DWG NO.

7016-7017

| 8.14.12 | CHANGE AS PER ECN 12-105 | B |
|---------|--------------------------|------|
| 3.03.11 | CHANGE AS PER ECN 11-027 | A |
| DATE | DESCRIPTION | REV. |

Mouser Electronics

Authorized Distributor

Click to View Pricing, Inventory, Delivery & Lifecycle Information:

[Keystone Electronics:](#)

[7017](#)