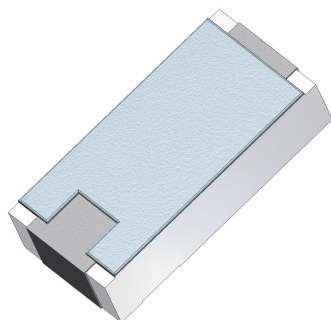


## Surface Mount Termination 10 Watts, 50Ω



### General Specifications

Resistive Element	Thick film
Substrate	Beryllium oxide ceramic
Terminals	Thick film silver

### Electrical Specifications

Resistance Range:	50 ohms, $\pm 2\%$
Frequency Range;	DC – 3.0 GHz
Power:	10 Watts
VSWR	1.25:1 DC – 3.0 GHz

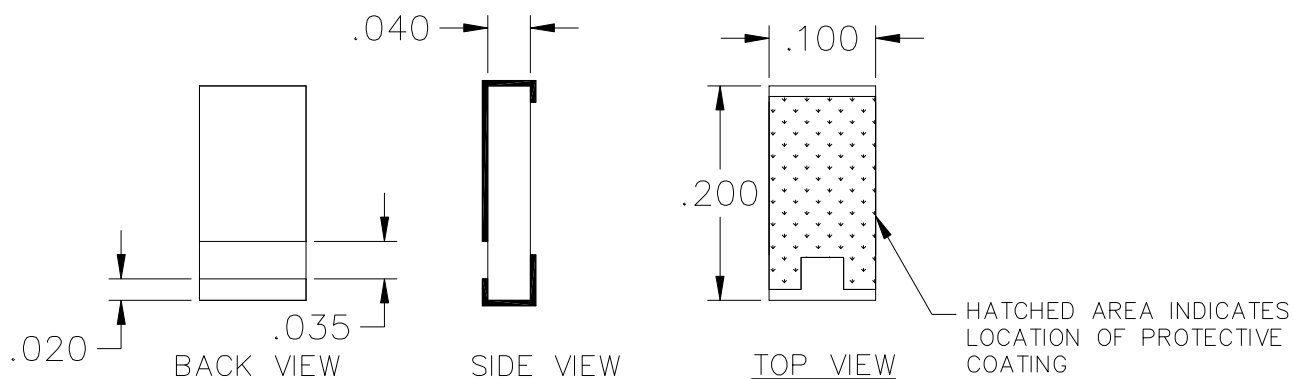
**Note:** Tolerance is  $\pm 0.010"$ , unless otherwise specified. Designed to meet or exceed applicable portions of MIL-E-5400. Operating temperature is  $-55^{\circ}\text{C}$  to  $125^{\circ}\text{C}$  (see chart for derating temperatures). All dimensions in inches.

Specifications subject to change without notice.

### Features:

- DC – 3.0 GHz
- 10 Watts
- BeO Ceramic
- Non-Nichrome Resistive Element
- Low VSWR
- 100% Tested

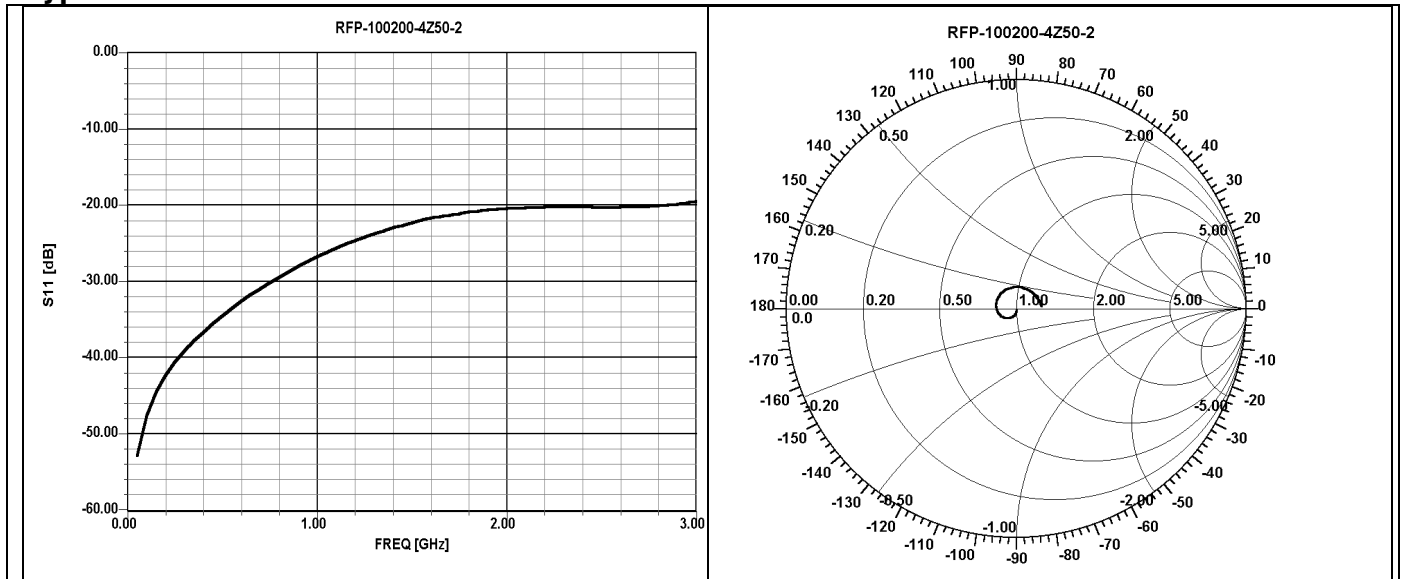
### Outline Drawing



100200-4Z50-2 (097) Rev C

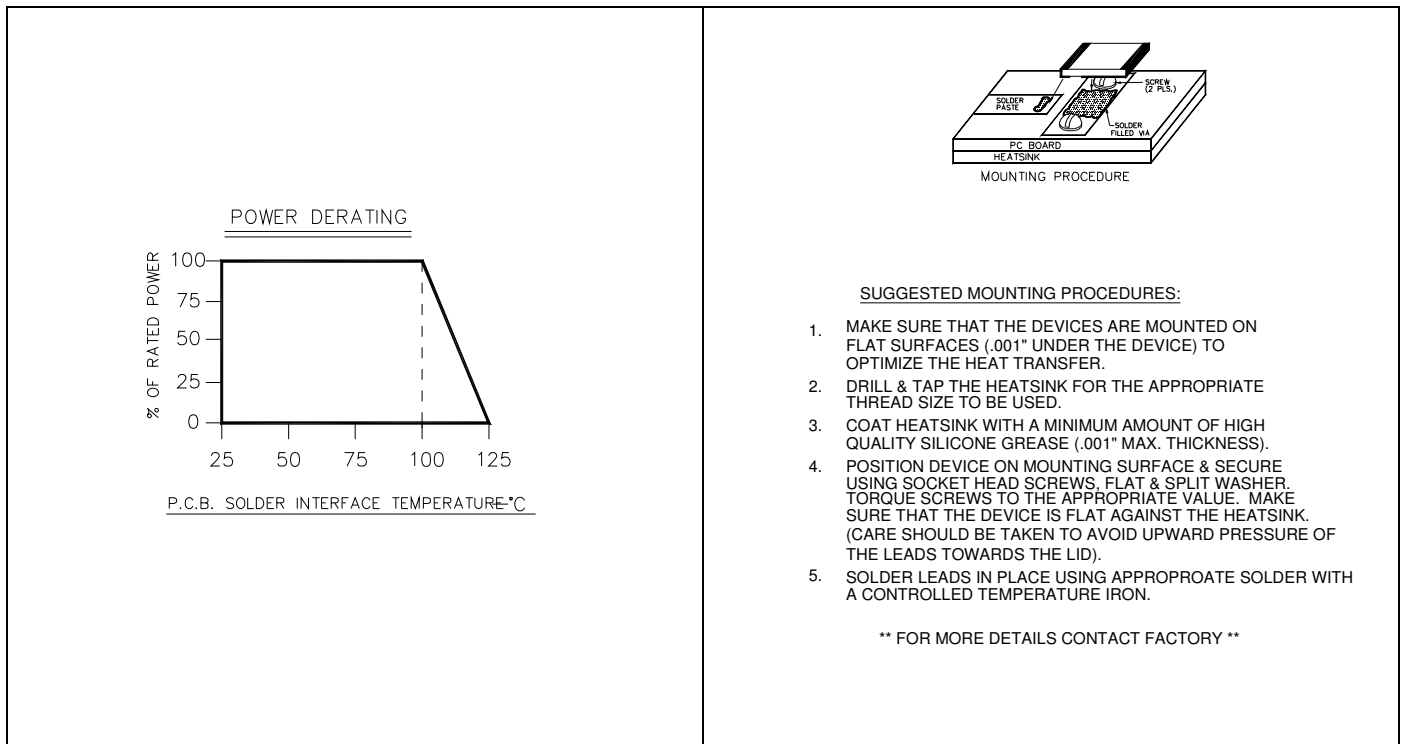


### Typical Performance:



### Power De-rating:

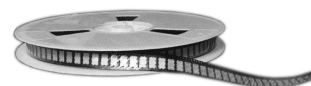
### Mounting Footprint and Procedure:



100200-4Z50-2 (097) Rev C

USA/Canada: (315) 432-8909  
Toll Free: (800) 544-2414  
Europe: +44 2392-232392

Available on Tape and  
Reel For Pick and Place  
Manufacturing.



**Anaren**  
What'll we think of next?™

# Mouser Electronics

Authorized Distributor

Click to View Pricing, Inventory, Delivery & Lifecycle Information:

[Anaren:](#)

[100200-4Z50-2](#)