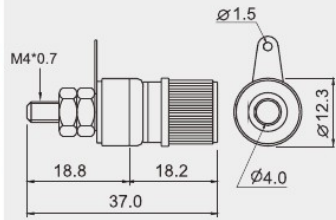


## R1-1B



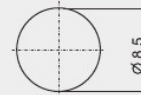
0.5~3.0mm  
10A

DC500V 100MΩ  
AC 1000V 1minute  
-20°C~+80°C

### FEATURES:

- Material:  
Insulation: nylon(UL flame: 94V-2).  
Metal: nickel plated brass.
- Binding post with  $\varnothing 4.0\text{mm}$ (0.160") banana socket.

### CUT-OUT



# Mouser Electronics

Authorized Distributor

Click to View Pricing, Inventory, Delivery & Lifecycle Information:

[Shin Chin:](#)

[R1-01B-R](#)