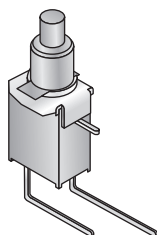



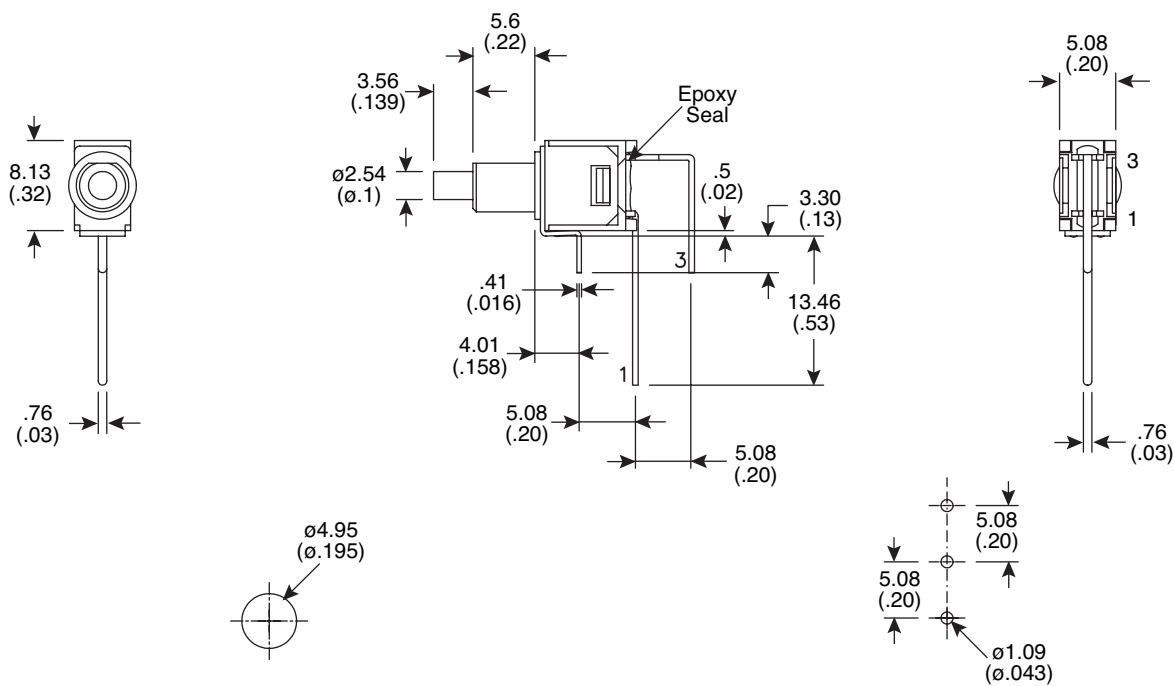


Dimensions: mm (In.)



POS. 1	POS. 2
	
OFF	MOM
OPEN	1-3
	

SWITCH FUNCTION



PANEL MOUNTING

P.C. MOUNTING

Electrical Specifications:

- Rating: 1A/250VAC, 3A/120VAC or 28 VDC
- Contact Resistance: 20mΩmax. initial @ 2-4VDC 100mA
- Insulation Resistance: 1,000MΩmin.
- Dielectric Strength: 1,000 V RMS@ sea level

Mechanical Specifications:

- Mechanical Life: 60,000 make-and-break cycles
- Operating Temperature: -30°C to 85°C

Note:

- RoHS compliant by exemption

Materials:

- Case: Diallyl phthalate (DAP)
- Plunger: Thermoplastic Polyester-black
- Bushing: Brass, nickel plated
- Housing: Stainless steel
- Contact: Silver or Gold plated
- Terminal: Brass, Silver plated
- Terminal Support: Brass, tin plated

Snap-Acting Pushbutton Switch

107-3025-EVX

Mountain Switch

Available from Mouser Electronics

www.mouser.com 1-800-346-6873

Specifications are subject to change without notice. No liability or warranty implied by this information. Environmental compliance based on producer documentation.

Mouser Electronics

Authorized Distributor

Click to View Pricing, Inventory, Delivery & Lifecycle Information:

Mountain Switch:

[107-3025-EVX](#)