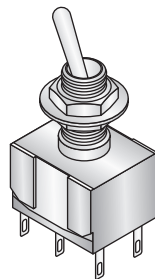






The image contains two sets of technical drawings. The top set, labeled 'PANEL MOUNTING', includes a front view of a circular component with dimensions: outer diameter $\phi 6$ ($\phi .236$), inner diameter $\phi 2.54$ ($\phi .10$), and various radial and axial measurements like 8.13 (.32), 4.40 (.173), 9.14 (.36), 10-48 UNS, 8.30 (.327), 5.59 (.22), 4.06 (.16), 2.80 (.11), 2.54 (.10), and .51 (.02). It also shows a side view with dimensions 6, 5, 4, 3, 2, 1 and a cross-section with dimensions 4.06 (.16) and 1.52 (.06). The bottom set, labeled 'SOLDER LUG', includes a front view of a circular component with dimensions: outer diameter $\phi 4.95$ ($\phi .195$), inner diameter $\phi 2.38$ ($\phi .094$), and various radial and axial measurements like 4.55 (.179), 6.10 (.24), 1.52 (.06), 2.80 (.11), 4.06 (.16), 4.06 (.16), 1.52 (.06), .76 (.03), and 1.52 (.06). It also shows a side view with dimensions 1, 2, 3, 4, 5, 6 and a cross-section with dimensions 4.06 (.16) and 1.52 (.06).



POS.1	POS.2
	
ON	ON
2-3,5-6	2-1,5-4
	

- Contact Resistance: 20mΩ max. initial @ 2-4VDC 100mA
- Insulation Resistance: 1,000MΩ min.
- Dielectric Strength: 1,000 V RMS@ sea level.
- Rating:
1A / 250 VAC
3A / 120 VAC or 28 VDC

- Operating Temperature: -30° C to +85° C

- RoHS Compliant by Exemption

- Case: Diallyl phthalate (DAP)
- Acuator: Brass, chrome plated
- Bushing: Brass, nickel plated
- Housing: Stainless steel
- Switch Support: Brass, tin plated
- Terminal/Contact: Brass, silver plated

Mountain Switch

www.mouser.com 1-800-346-6873

Specifications are subject to change without notice. No liability or warranty implied by this information. Environmental compliance based on producer documentation.

Mouser Electronics

Authorized Distributor

Click to View Pricing, Inventory, Delivery & Lifecycle Information:

Mountain Switch:

[108-2MD1T1B1M1QE-EVX](#)