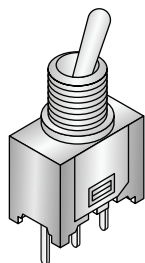
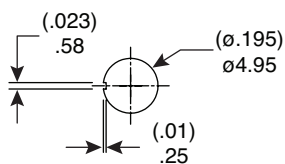
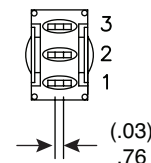
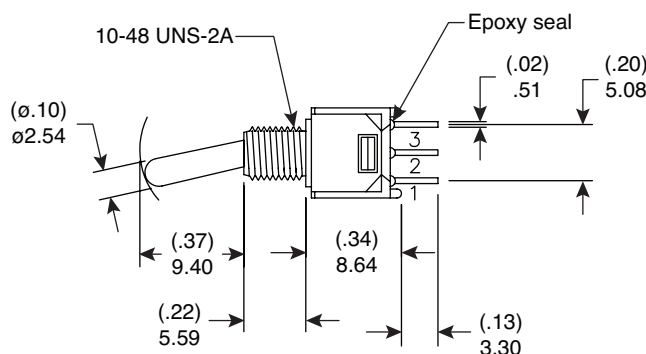
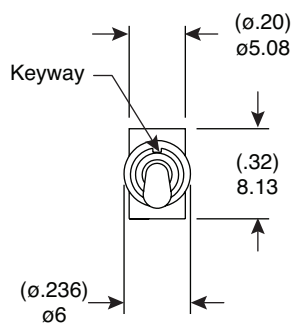


Dimensions: mm (in.)

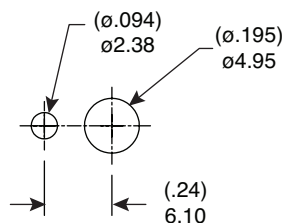


Pos. 1	Pos. 2	Pos. 3
Off	None	On
Open	N/A	3-1

Switch Function for 108-0041-EVX

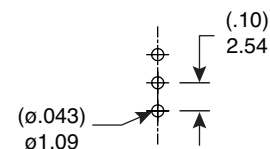


Without locking ring



With standard locking ring

P.C. Mounting



Panel Mounting

Mechanical Specifications:

- Mechanical Life: 30,000 make-and-break cycles
- Operating Temperature: -30°C to 85°C

Electrical Specifications:

- Rating: 1A / 250VAC, 3A / 120 VAC or 28 VDC
- Contact Resistance: 20mΩ max. initial @ 2-4VDC 100mA
- Insulation Resistance: 1,000MΩ min.
- Dielectric Strength: 1,000 V RMS@sea level

Materials:

- Case: Diallyl phthalate (DAP)
- Actuator: Brass, chrome plated
- Bushing: Brass, nickel plated
- Housing: Stainless Steel
- Switch Support: Brass, tin plated
- Terminals/Contact: Brass, with silver or gold plated

Note:

- RoHS compliant by exemption
- 108-0041-EVX Omit 2nd Terminal

Mouser Stock No.	Type	Circuit
108-0041-EVX	SPST	Off-On
108-0042-EVX	SPDT	On-On
108-0044-EVX	SPDT	On-Off-On

Sub-Miniature Toggle Switches
108-0041-EVX, 108-0042-EVX, 108-0044-EVX



Mouser Electronics

Authorized Distributor

Click to View Pricing, Inventory, Delivery & Lifecycle Information:

Mountain Switch:

[108-0042-EVX](#) [108-0044-EVX](#) [108-0041-EVX](#)