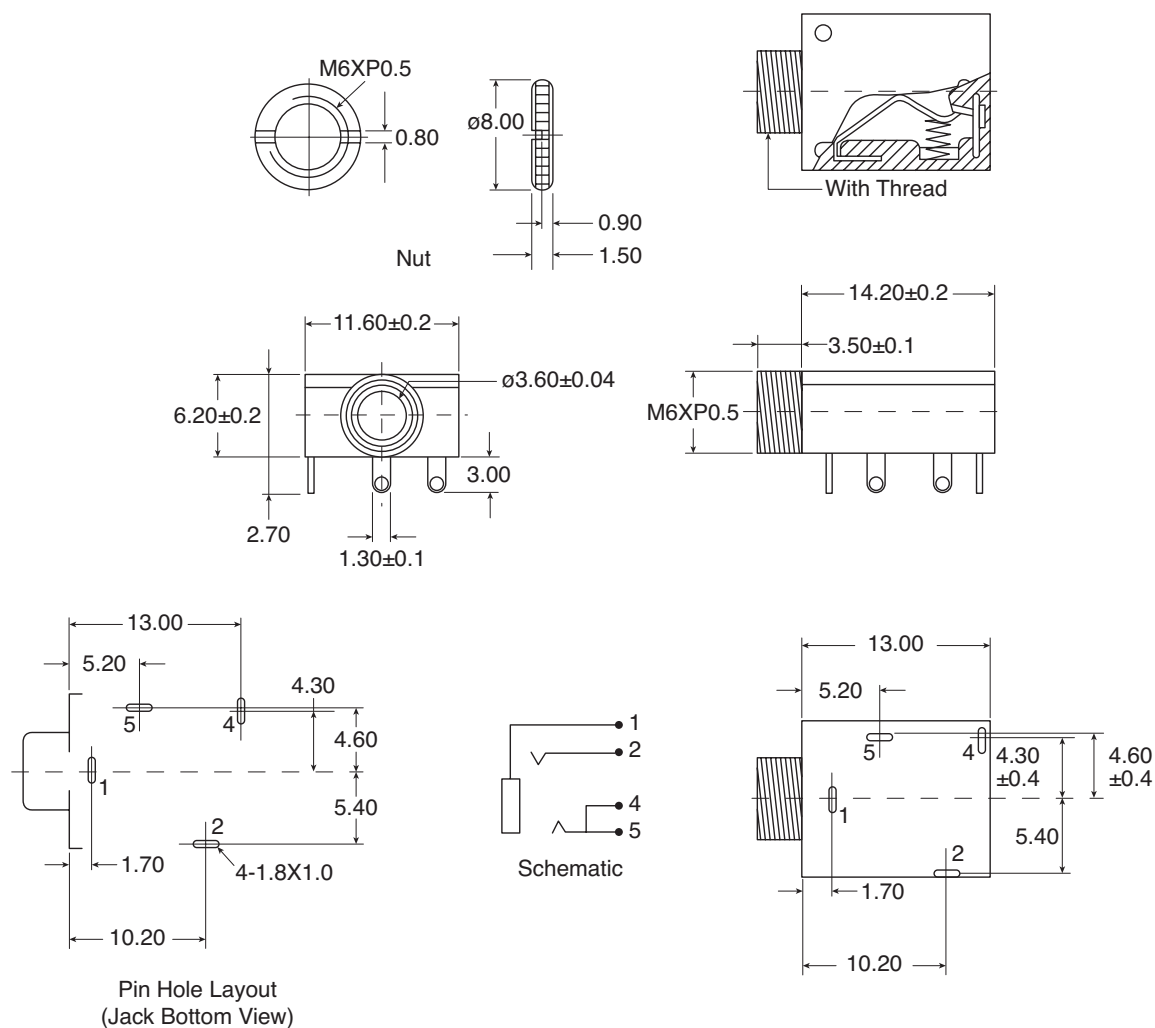


## DIMENSIONS: mm



## Specifications:

Type : Stereo, PCB Mount

Insulation Resistance :  $>100M\Omega$

Contact Resistance :  $<30m\Omega$

Insertion/Extraction Force : .5 ~ 2Kgs/cm./ .4 ~ 2

Life : 5,000 Cycles

Mounting Holes : 6.3mm

Hardware Included : Knurled Nut

**Note:** RoHS Compliant

**Available from Mouser Electronics**  
**1-800-346-6873 / [www.mouser.com](http://www.mouser.com)**

KC-301504

# Mouser Electronics

Authorized Distributor

Click to View Pricing, Inventory, Delivery & Lifecycle Information:

[Kobiconn:](#)

[161-3509-L](#)