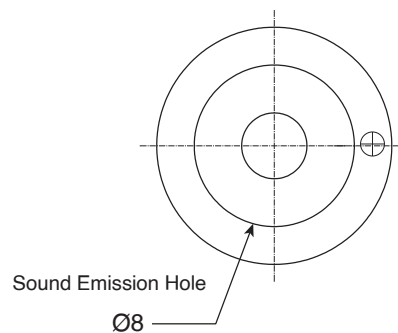
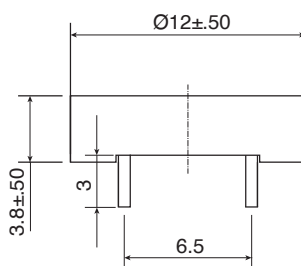
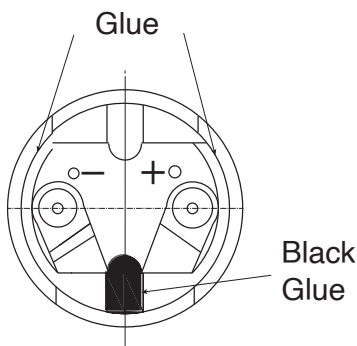
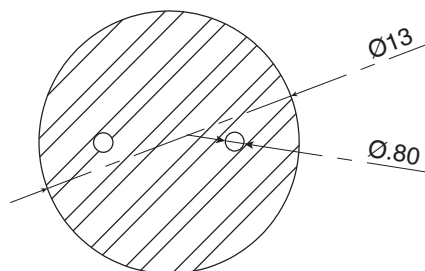


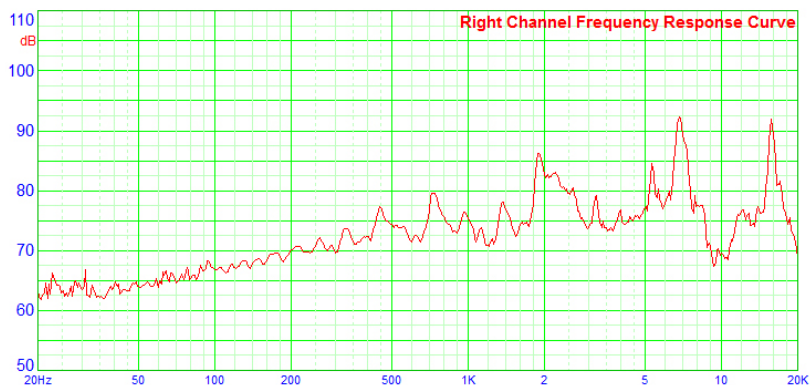
DIMENSIONS: mm



Recommended PCB Layout



FREQUENCY RESPONSE CURVE



SPECIFICATIONS:

- Rated Voltage : 3V
- Operating Voltage : 2~4V
- Consumption Current : 90mA(Max)
- Sound pressure level : 80dBA(Min)
(Distance at 10cm)
- Direct Current Resistance : 15Ω±2
- Rated Frequency : 2048Hz
- Operating Temp. : -20°C ~ +60°C
- Storage Temp. : -30°C ~ +70°C

NOTE: RoHS Compliant

Available from Mouser Electronics
1-800-346-6873 / www.mouser.com

KT-400588

Mouser Electronics

Authorized Distributor

Click to View Pricing, Inventory, Delivery & Lifecycle Information:

Kobitone:

[254-EMB12F3-RO](#)