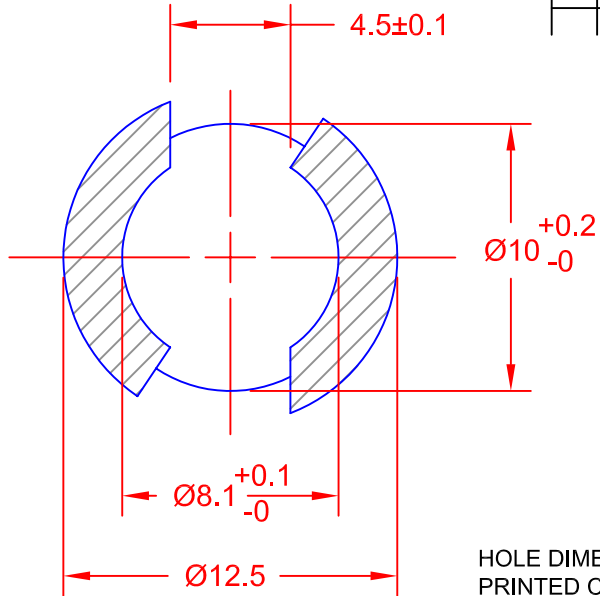
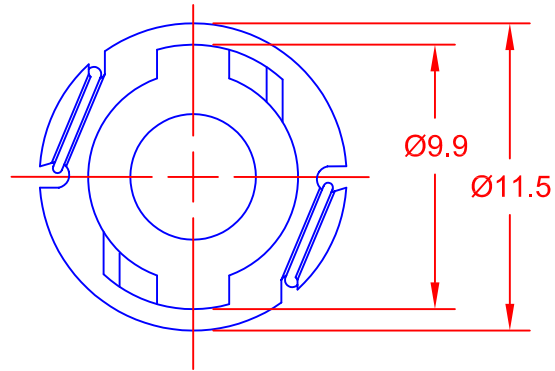
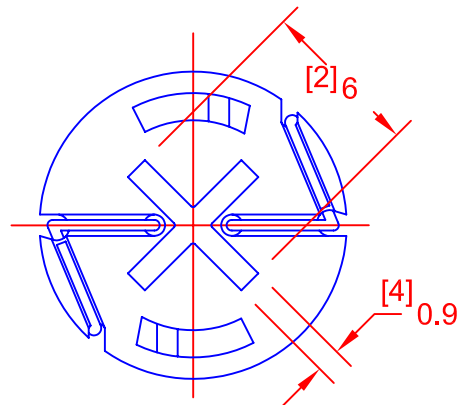
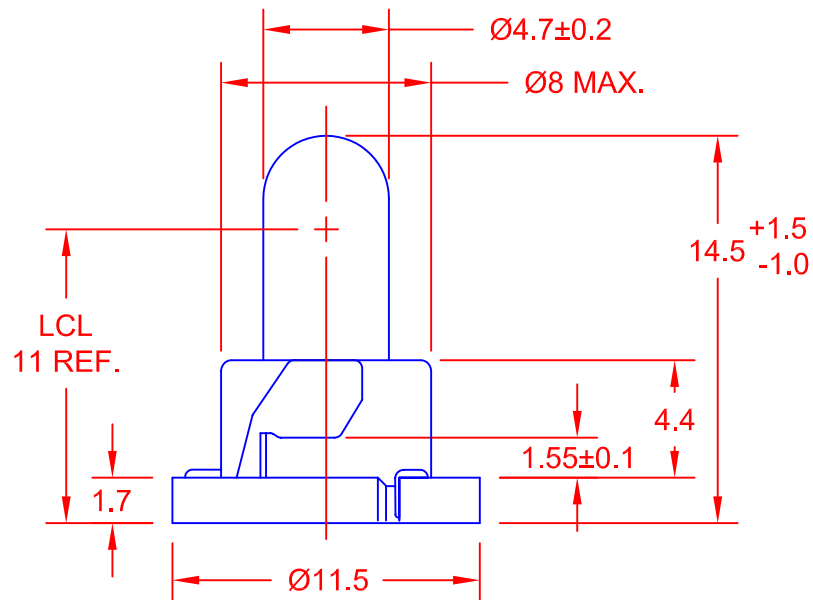


REV.	DESCRIPTION/ECO NO.	DATE
	RELEASED TO CAD	8/23/06



HOLE DIMENSION FOR THIS LAMP
PRINTED CIRCUIT BOARD (t = 1.6)
(NO TREATMENT SUCH AS APPLICATION
OF FLUX, SHALL BE DONE.)



JKL PART NUMBER	VOLTS RATED	AMPS ±10%	*MSCP ±25%	*LUMENS ±25%	AVERAGE LIFE HRS.	FILAMENT TYPE
**ENW80-EW10/GRA/16MM	14.0	.100	.500	6.29	10,000	C-2F

*LAMP RATED ONLY (NOT IN BASE).

**RoHS COMPLIANCE.

BASE COLOR: GRAY

METRIC		DIMENSIONS ARE IN MILLIMETERS		JKL COMPONENTS CORPORATION			
THIRD ANGLE PROJECTION		TOLERANCE UNLESS OTHERWISE SPECIFIED 1 PL +/- 0.2 2 PL +/- 0.20 ANGLE +/- 0		TITLE T-1 1/2 NEO-WEDGE BASE WITH EW10 LAMP			
DRAWN BY L. WENGSTROM	APPV'D BY E.D.	DATE 6/23/06	SIZE A	FSCM NO. 55335	DRAWING NO. ENW80-EW10/GRA/16MM		
- CAD DRAWING - MANUAL REVISIONS NOT PERMITTED			SCALE NONE	RELEASED DATE 8/23/06	REVISION DATE	REV. NO.	SHEET 1 OF 1

Mouser Electronics

Authorized Distributor

Click to View Pricing, Inventory, Delivery & Lifecycle Information:

[JKL Components:](#)

[ENW80-EW10/GRA/16mm](#)