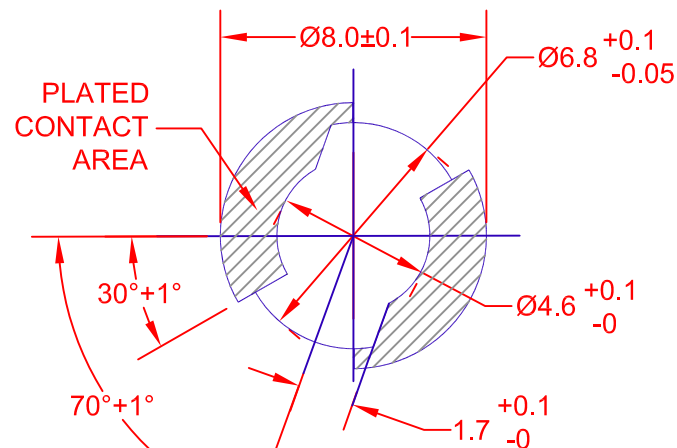
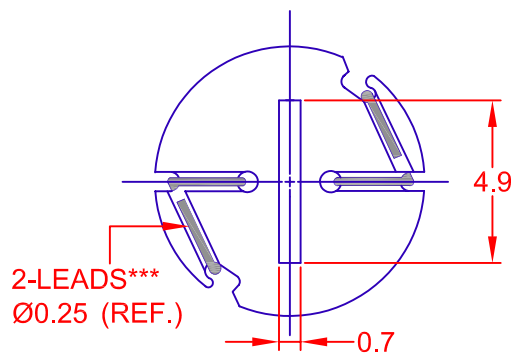
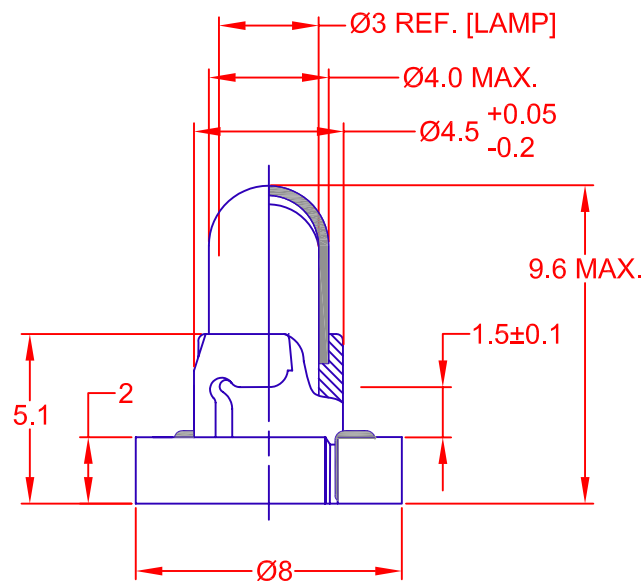


REV.	DESCRIPTION/ECO NO.	DATE
	RELEASED	12/14/05
A	CHANGE x AND y's	3/21/06
B	MOL TO 9.6, ADD FLUX NOTE	4/10/06



PC BOARD PUNCH PATTERN
BOARD THICKNESS 1.6±0.1mm.
(NO APPLICATION OF FLUX, SHALL BE DONE.)

JKL PART NUMBER: CNW5-CW11/GRA/39-01-6M/S

LAMP NUMBER: CW11**

VOLTS RATED	AMPS ± 10%	*MSCP ± 25%	*LUMENS ± 25%	AVERAGE LIFE HRS.	FILAMENT TYPE
14.0	.065	.200	2.51	5,000 D.C.	C-2F

*LAMP RATING ONLY WITHOUT BASE AND FILTER.

**LAMP GLASS LEAD (Pb) FREE.

***PLATING LEAD (Pb) FREE.

CONTACT JKL FOR LEAD (Pb) FREE LOT IDENTIFICATION.


FILTER NUMBER: 39-01-6M/S

BASE COLOR: GRAY

COLOR COORDINATES (SPHERE)

x = .365 ± .025

y = .345 ± .025

<div><div>METRIC</div><div></div><div>THIRD ANGLE PROJECTION</div></div>		<div><div>DIMENSIONS ARE IN MILLIMETERS</div><div>TOLERANCE UNLESS OTHERWISE SPECIFIED</div><div>1 PL +/- 0.3 2 PL +/- 0.30 ANGLE +/- 0</div></div>		<div><div>JKL COMPONENTS CORPORATION</div><div>TITLE</div><div>T-1 NEO-WEDGE BASED LAMP WITH FILTER</div></div>					
<div><div>DRAWN BY</div><div>L. WENGSTROM</div></div>		<div><div>APPV'D BY</div><div>LEN</div></div> <div><div>DATE</div><div>4/10/06</div></div>		<div><div>SIZE</div><div>A</div></div>	<div><div>FSCM NO.</div><div>55335</div></div>		<div><div>DRAWING NO.</div><div>CNW5-CW11/GRA/39-01-6M/S</div></div>		
<div><div>- CAD DRAWING -</div><div>MANUAL REVISIONS NOT PERMITTED</div></div>				<div><div>SCALE</div><div>NONE</div></div>	<div><div>RELEASED DATE</div><div>12/14/05</div></div>	<div><div>REVISION DATE</div><div>4/10/06</div></div>		<div><div>REV. NO.</div><div>B</div></div>	<div><div>SHEET</div><div>1 OF 1</div></div>

Mouser Electronics

Authorized Distributor

Click to View Pricing, Inventory, Delivery & Lifecycle Information:

[JKL Components:](#)

[CNW5-CW11/GRA/39016M/S](#)