

# ALUMILINE® LED FIXTURE

## Features

- High Brightness
- Long Life
- Low Power Consumption
- RoHS Compliant
- No UV Emission
- Thermally Optimized
- Low Profile
- IP67
- Mounting Holes for Ease of Installation



## Maximum Ratings

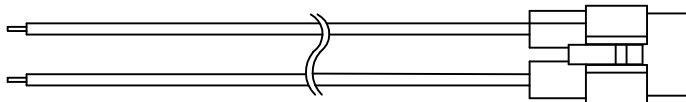
Parameter	Symbol	Rating	Units
LED Junction Temperature	$T_J$	125	°C
Operating Temperature	$T_{opr}$	-30 ~ +85	°C
Storage Temperature	$T_{stg}$	-40 ~ +85	°C
Input Voltage	$V_{in DC}$	20 - 35	Volts

## Accessories

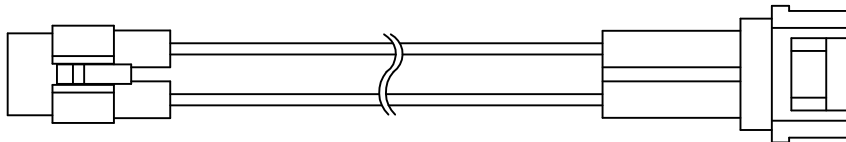
- ZPS-2435: 24V, 35 Watt Power Supply
- ZPS-2460: 24V, 60 Watt Power Supply
- ZDM-01: PWM LED Dimmer

Note: ZPS-2435 and ZPS-2460 require use of wire nuts for connections.

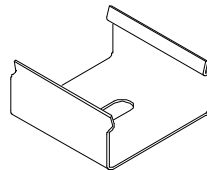
## Mating Components



ZWF-1000-I: Input Connector



ZWF-CH-J: Jumper Connector



ZWF-12-C: Mounting Clip

## Note

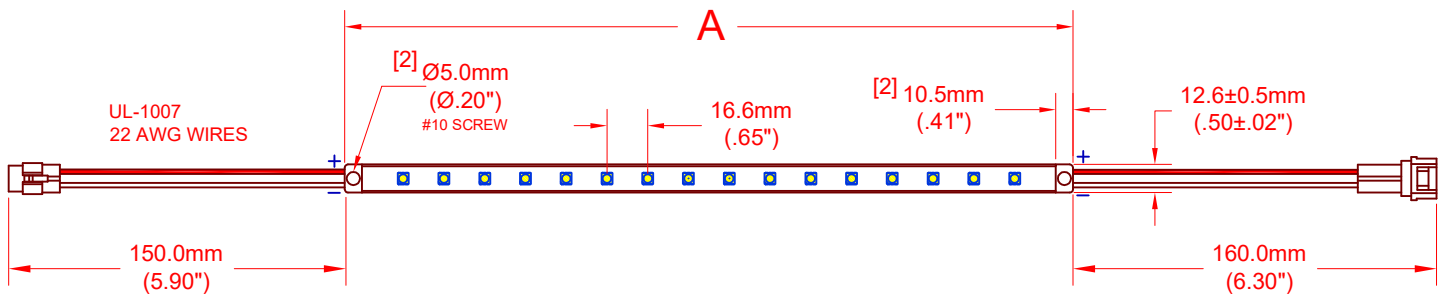
Please refer to JKL Application Sheet **JKL-AS-ZWF-ALUMILINE** for Installation and Power recommendations.



REV. NO.	DESCRIPTION/ECO NUMBER	APPV'D DATE	METRIC	DIMENSIONS ARE MILLIMETER (INCH)	TOLERANCE UNLESS OTHERWISE SPECIFIED	SIZE	FSCM NO.	DRAWING NO.	RELEASED DATE	REVISION DATE	REV. NO.	SHEET
E	ADD CANADIAN-US SYMBOL	9/16/19	<p>THIRD ANGLE PROJECTION</p>	<p>1 PL +/- REF.</p> <p>2 PL +/- REF.</p> <p>ANGLE +/- REF.</p>	<p>ALUMILINE® 24V DC LED FIXTURE</p>	<p><b>A</b></p>	<p><b>55335</b></p>	<p>ZWF-MULTI</p>	<p>6/27/12</p>	<p>6/16/19</p>	<p><b>E</b></p>	<p>1 OF 2</p>
D	ADD PART # ZWF-438-24WW, CHNG. ZWF-438-24CW 26 LEDS TO 24 LEDS	8/7/14										
C	CHANGE PART NO. ZWF-486-24CW TO 438	1/9/13										
B	ADD PART NO. ZWF-486-24CW ON PG. 2	11/27/12										
A	CHANGE MOUNTING CLIP PART NO. RELEASE AND CANCEL PL-1206-03	9/18/12 6/27/12										
<p>- CAD DRAWING -</p> <p>MANUAL REVISIONS NOT PERMITTED</p>			<p>SCALE</p> <p>NONE</p>		<p>TITLE</p> <p>ALUMILINE® 24V DC LED FIXTURE</p>		<p>REV. NO.</p> <p><b>E</b></p>		<p>SHEET</p> <p>1 OF 2</p>			

# ALUMILINE<sup>®</sup> LED FIXTURE

## Dimensions



## Electro-Optical Characteristics (Ta = 25°C)

### COLOR: COOL WHITE 6000K

JKL Part Number	Dimension <b>A</b> ± 5.0mm (±0.2 inch)	Number LEDs	Power (W)	Current (mA)	Lumen Flux (lm)
ZWF-337-24CW	337.0 (13.27)	18	2.9	120	248
ZWF-438-24CW	438.0 (17.24)	24	4.19	173	358
ZWF-638-24CW	638.0 (25.12)	36	5.8	240	469
ZWF-939-24CW	939.0 (36.97)	54	8.7	350	691
ZWF-1239-24CW	1239.0 (48.78)	72	11.6	480	912

### COLOR: WARM WHITE 3000K

ZWF-337-24WW	337.0 (13.27)	18	2.9	120	230
ZWF-438-24WW	438.0 (17.24)	24	3.9	162	340
ZWF-638-24WW	638.0 (25.12)	36	5.8	240	435
ZWF-939-24WW	939.0 (36.97)	54	8.7	350	690
ZWF-1239-24WW	1239.0 (48.78)	72	11.6	480	845

# Mouser Electronics

Authorized Distributor

Click to View Pricing, Inventory, Delivery & Lifecycle Information:

## JKL Components:

[ZWF-638-24WW](#) [ZWF-638-24CW](#) [ZWF-337-24WW](#) [ZWF-1239-24CW](#) [ZWF-939-24WW](#) [ZWF-939-24CW](#) [ZWF-337-24CW](#) [ZWF-438-24WW](#) [ZWF-1239-24WW](#) [ZWF-438-24CW](#)