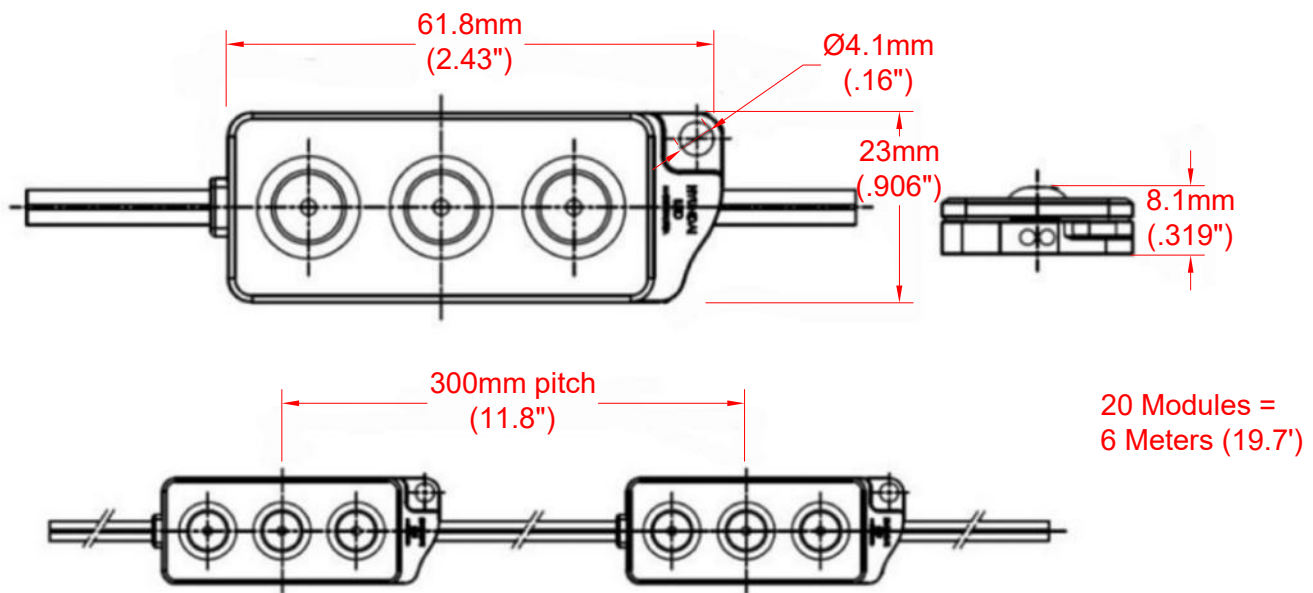


165° WIDE BEAM LED CHANNEL for MEDIUM or LARGE SIGN BOXES

FEATURES

24V DC
IP67
50,000 Life Hours/5 Year Warranty
115 lm/W High Efficacy
Operating Temperature -20°C to +50°C
165° Wide Beam
20 Modules Per Strand



NOTES:

1. Mounting can be accomplished with double sided tape that is on the backside of modules. Screw holes are also present.
2. Wire with Red Stripe is Positive Input.
3. Use no more than 20 modules in series.
4. Take care to prevent exposed wire on the ends.

UL
E339601

JKL Part Number	Input Voltage	Power per Module	CCT	Beam Angle	CRI	Lumen Flux Per Module	Lumen Efficacy	No. Modules Per a Pack
ZM-359-CW	24V DC	1.6 W	6500K	165°	Ra80	185 lm	115 lm/W	20/6 Meters

			METRIC		DIMENSIONS ARE IN mm (INCHES)		JKL COMPONENTS CORPORATION		
			THIRD ANGLE PROJECTION		TOLERANCE UNLESS OTHERWISE SPECIFIED		TITLE		
			DRAWN BY		APPV'D BY		DATE		
RELEASED			L. WENGSTROM		S.C.		9/15/19		
			- CAD DRAWING -		SCALE		NONE		
			MANUAL REVISIONS NOT PERMITTED		FSCM NO.		55335		
			DRAWING NO.		ZM-359-CW		REV. NO.		
			RELEASED DATE		9/15/19		REVISION DATE		
			APPV'D DATE				SHEET 1 OF 1		

Mouser Electronics

Authorized Distributor

Click to View Pricing, Inventory, Delivery & Lifecycle Information:

[JKL Components:](#)

[ZM-359-CW](#)