

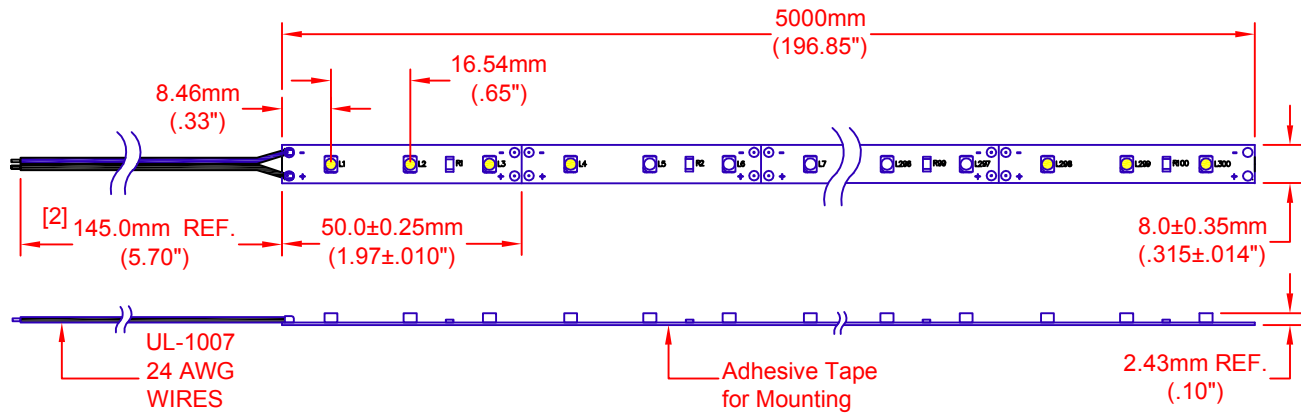


G	DELETE PART NO. ZFS-8500-Y	6/13/14	<div>METRIC</div> <div></div> <div>THIRD ANGLE PROJECTION</div>	<div>DIMENSIONS ARE IN mm (INCHES)</div> <div>TOLERANCE UNLESS OTHERWISE SPECIFIED</div> <div>1 PL +/- REF. 2 PL +/- REF. ANGLE +/-</div>	<div> JKL COMPONENTS CORPORATION</div>					
F	ADD UL SYMBOL	12/9/13			TITLE					
E	CHANGE MATING COMPONENTS	5/17/13			LED FLEX RIBBON, 12V					
D	ADD ACCESSORIES NOTES	8/16/11								
C	ADD WIRE TYPE AND SIZE	6/27/11								
B	SHOW WIRES ON BOTH ENDS	2/15/11								
A	ADD ZFS-8500-Y PART NO & ASSESSORIES	12/28/10	DRAWN BY	APPV'D BY	DATE	SIZE	FSCM NO.	DRAWING NO.		
	RELEASED	8/18/10	L. WENGSTROM	S.C.	6/13/14	A	55335		ZFS-8500 MULTI	
REV. NO.	DESCRIPTION/ECO NUMBER	APPV'D DATE	- CAD DRAWING - MANUAL REVISIONS NOT PERMITTED			SCALE	RELEASED DATE	REVISION DATE	REV. NO.	SHEET
						NONE	8/18/10	6/13/14	G	1 OF 2

LED FLEX RIBBON

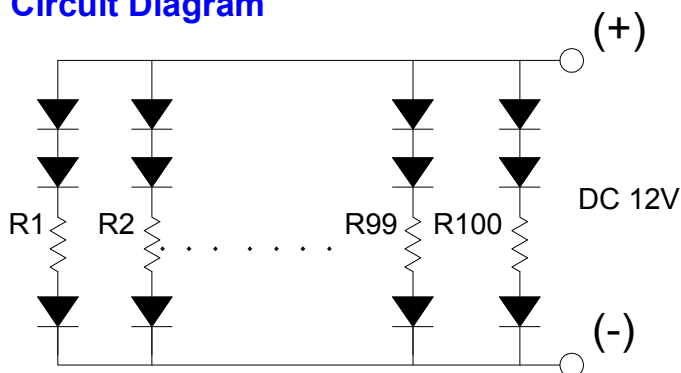
Dimensions



Electro-Optical Characteristics (Ta = 25°C)

JKL Part Number	Color	Number of LED's	Input Voltage (V DC)	Power (W)	Current (mA)	Radiance Angle	CCT (K)	Lumen Flux (lm)
ZFS-8500-CW	Cool White	300	12	21.60	1800	120°	6000	1092
ZFS-8500-NW	Neutral White	300	12	21.60	1800	120°	4100	1014
ZFS-8500-WW	Warm White	300	12	21.60	1800	120°	3050	936

Circuit Diagram



Mouser Electronics

Authorized Distributor

Click to View Pricing, Inventory, Delivery & Lifecycle Information:

[JKL Components:](#)

[ZFS-8500-NW](#)