

# HIGH DENSITY DOUBLE ROW LED FLEX RIBBON

## Features

VOLTAGE: 12V DC

CURRENT: 4.3 Amps

LED VIEWING ANGLE (2  $\theta$  1/2): 120°

STANDARD PACKAGING:

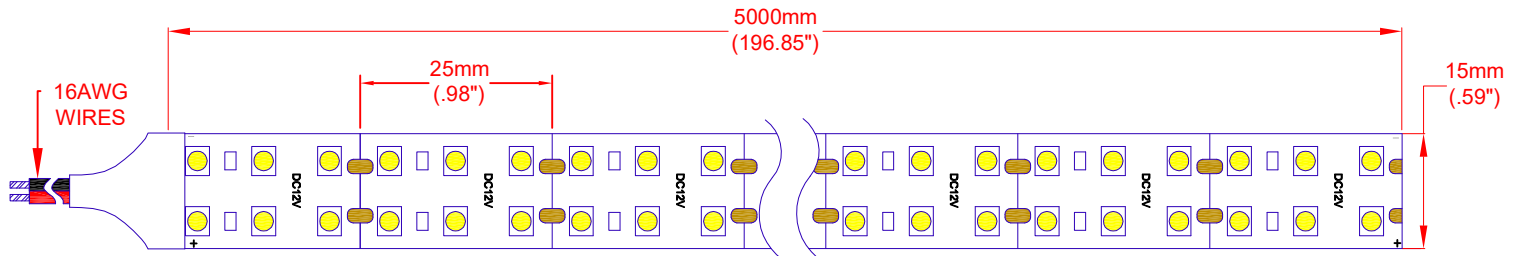
5 METER REEL (1200 LED'S)

OPTIONAL PACKAGING:

INDIVIDUAL 500mm Sections (120 LED's)

Order as ZFS-155000-CW/SEC

NOTE: Individual sections ARE NOT supplied with insulated wire connection.



## Accessories

ZPS-1235 12V, 35 Watt Power Supply

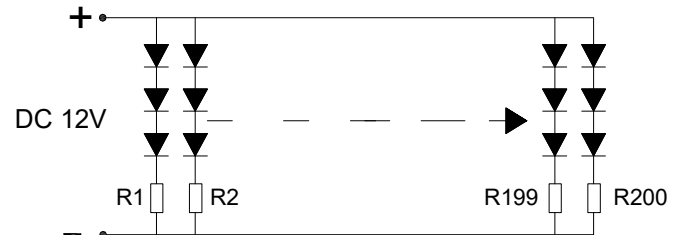
ZPS-1260 12V, 60 Watt Power Supply

ZDM-01 PWM LED Dimmer

Note: ZPS-1235 and ZPS-1260 require use of wire nuts for connections.

## Absolute Maximum Rating at Ta = 25°C

Parameter	Symbol	Rating	Units
Forward Current	IF	4.3	A
Power Dissipation	PD	57.25	W
Electrostatic Discharge	ESD	800	V
Operating Temperature	Topr	-20~+50	°C
Storage Temperature	Tstg	-30~+80	°C



## Electro-Optical Characteristics (Ta = 25°C)

JKL Part Number	Color	Number of LED's	Input Voltage (V DC)	Power (W)	Current (A)	Radiance Angle	CCT (K)	Lumen Flux (lm)
ZFS-155000-CW	Cool White	1200	12	57.25	4.3	120°	6500°K	6925

## Note

Please refer to JKL Application Sheet JKL-AS-ZFS-LED FLEX for Installation and Power Recommendations.



## ATTENTION

OBSERVE PRECAUTION FOR HANDLING ELECTROSTATIC DISCHARGE SENSITIVE DEVICES

			METRIC		DIMENSIONS ARE IN mm (INCHES)		JKL COMPONENTS CORPORATION			
			THIRD ANGLE PROJECTION		TOLERANCE UNLESS OTHERWISE SPECIFIED		TITLE			
					1 PL +/- REF.		12V HIGH DENSITY DOUBLE ROW			
					2 PL +/- REF.		LED FLEX RIBBON			
							DRAWING NO.			
A			CHANGE SOLDER PADS TO 3		8/7/18		ZFS-155000-CW			
			RELEASED		3/21/16					
REV. NO.			DESCRIPTION/ECO		APPVD DATE		SCALE			
							NONF			
							RELEASED DATE			
							3/21/16			
							REVISION DATE			
							8/7/18			
							A			
							SHEET 1 OF 1			

# Mouser Electronics

Authorized Distributor

Click to View Pricing, Inventory, Delivery & Lifecycle Information:

[JKL Components:](#)

[ZFS-155000-CW](#)