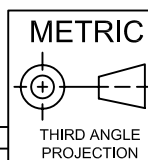


JKL LAMP NUMBER	VOLTS RATED	AMPS ±10%	MSCP ±25%	LUMENS ±25%	AVERAGE LIFE HRS.	FILAMENT TYPE
14	2.47	.300	.50	6.29	15	C-2R
1438	3.8	.430	1.60	20.11	1	C-2R
52	14.4	.100	.75	9.43	1,000	C-2V



**METRIC**  
DIMENSIONS ARE  
IN MILLIMETERS  
TOLERANCE UNLESS  
OTHERWISE SPECIFIED  
1 PL +/- 0.2  
2 PL +/- 0.20  
ANGLE +/- 0

**JKL**

COMPONENTS CORPORATION

TITLE

G-3 1/2 MINIATURE SCREW BASE

DRAWN BY  
L. WENGSTROM

APPVD BY  
J.K.

DATE  
7/22/05

SIZE  
A

FSCM NO.  
55335

DRAWING  
NO.

SCREW BASE G-3 1/2

- CAD DRAWING -  
MANUAL REVISIONS NOT PERMITTED

SCALE

NONE

RELEASED  
DATE

2/26/01

REVISION  
DATE

7/22/05

REV.  
NO.

A

SHEET  
1 OF 1

REV. NO.	DESCRIPTION/ECO NUMBER	APPVD DATE
A	DELETE CANCELLED PART NO. 1449	7/22/05
	RELEASE	2/26/01

# Mouser Electronics

Authorized Distributor

Click to View Pricing, Inventory, Delivery & Lifecycle Information:

[JKL Components:](#)

[52](#)