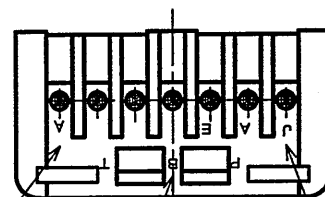
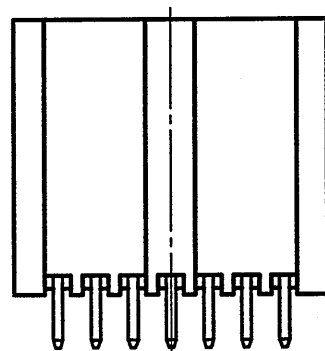


図面番号(DRAWING NO.)



(NOTE 1) / (NOTE 3) / (NOTE 2)

Technical drawing of a mechanical part, likely a bracket or support, showing dimensions and tolerances. The drawing includes a side view and a cross-sectional view.

**Dimensions and Tolerances:**

- Overall width:  $18.2 \pm 0.5$
- Distance from left face to center of hole:  $12.7 \begin{smallmatrix} +0.25 \\ -0.15 \end{smallmatrix}$
- Distance from center of hole to right face:  $3.2$
- Overall height:  $11 \pm 0.5$
- Distance from top face to center of hole:  $8.1 \begin{smallmatrix} +0.25 \\ -0.15 \end{smallmatrix}$
- Distance from bottom face to center of hole:  $4.6$
- Distance from left face to center of hole (bottom view):  $8.4 \pm 0.3$
- Distance from center of hole to right face (bottom view):  $3.5 \pm 0.5$
- Hole diameter:  $\varnothing 0.64 \pm 0.05$

**Callouts:**

- 1: Points to the top surface of the part.
- 2: Points to the hole.

注1. 金型マークを浮き出す。  
2. 社標を浮き出す。  
3. 材料マークを浮き出す。  
4. コンタクト先端部に、めっきは付かない。

JAE CONNECTOR DIV. PROPRIETARY.  
COPYRIGHT(C) 1988, JAPAN AVIATION ELECTRONICS INDUSTRY, LTD.

DOF-0-212E(03.08)

# Mouser Electronics

Authorized Distributor

Click to View Pricing, Inventory, Delivery & Lifecycle Information:

[JAE Electronics:](#)

[IL-AG5-7P-S3T2](#)