

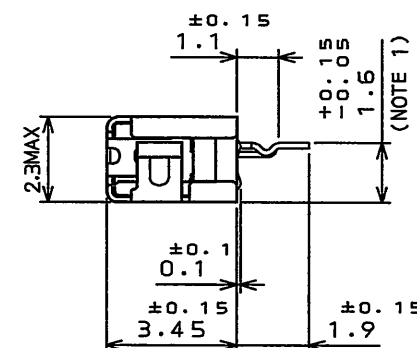
Technical drawing of the connector assembly, showing two views: a top view (upper) and a side view (lower).

Top View Dimensions and Labels:

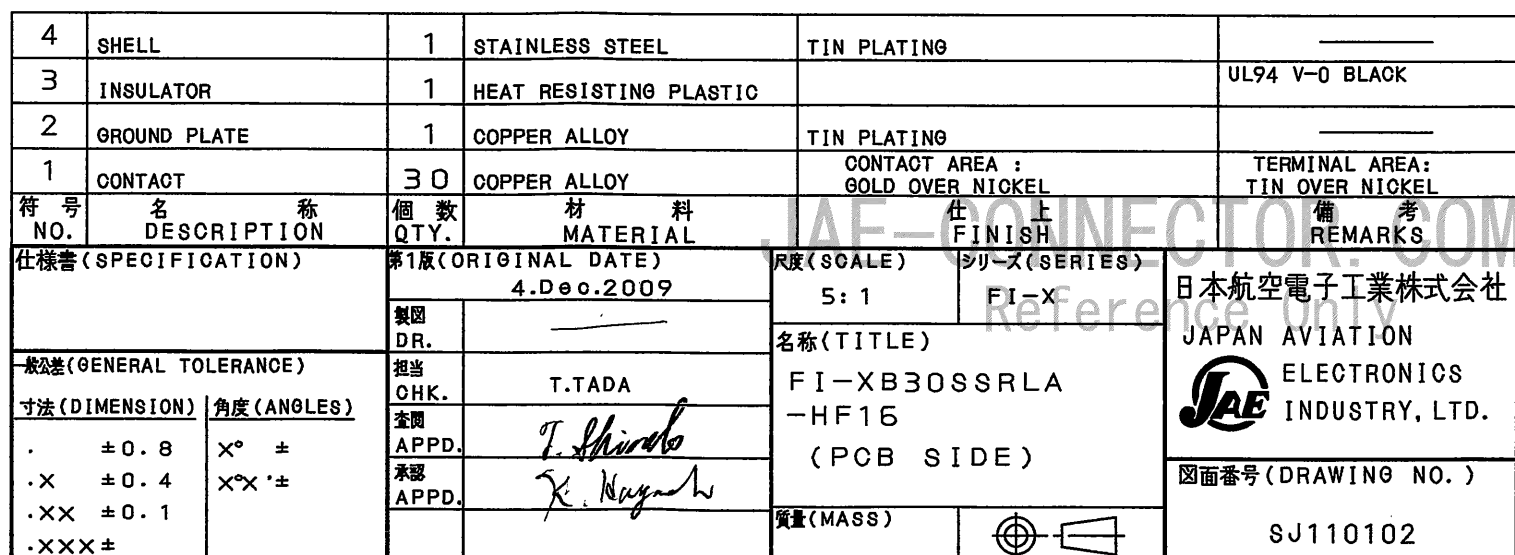
- Overall length: ± 0.15 29
- Distance from left end to first pin: ± 0.08 1
- Pin pitch: (PITCH)
- Pin number at left end: No.2
- Pin number at right end: No.31
- Feature 3 is indicated by a circle labeled 3.

Side View Dimensions and Labels:

- Lot No. (NOTE3) points to the left side of the housing.
- Product Name. (NOTE3) points to the center of the housing.
- Text on the housing: **※※※※※※※※ F I - X B 3 0 S S R L A - H F 1 6**
- The side view shows the profile of the housing and the arrangement of the pins.



3. 図示の位置にロット番号及び製品名を表示する。



適合基板寸法（参考）

JAE CONNECTOR DIV. PROPRIETARY.
COPYRIGHT (C) 2009, JAPAN AVIATION ELECTRONICS INDUSTRY, LTD.

Mouser Electronics

Authorized Distributor

Click to View Pricing, Inventory, Delivery & Lifecycle Information:

[JAE Electronics:](#)

[FI-XB30SSRLA-HF16](#)