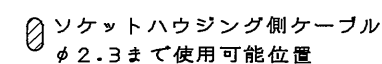
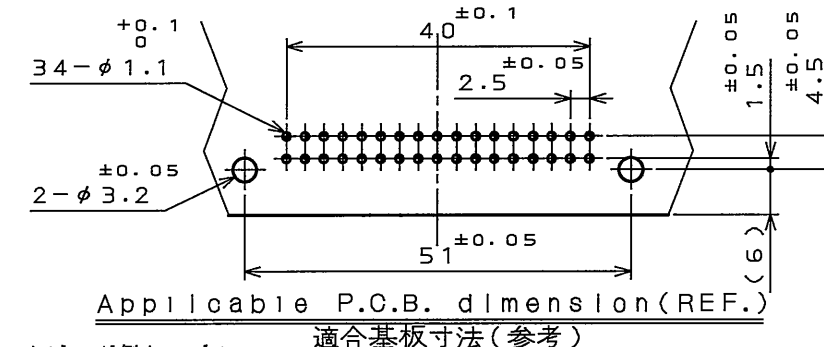


社標、キャビマーク刻印

キャビマークは金型キャビ毎に
A,B,C・・・の順に刻印する。

Raised company logo
and cavity mark.
Cavity mark appears
in alphabetical
order.

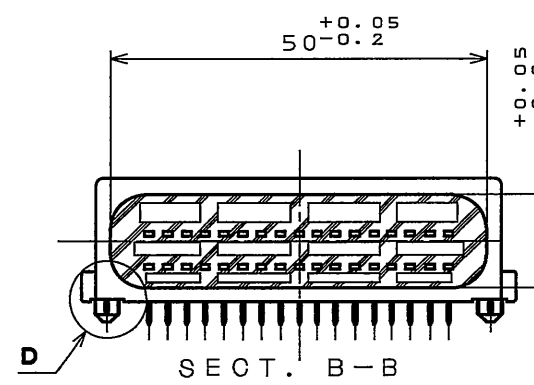
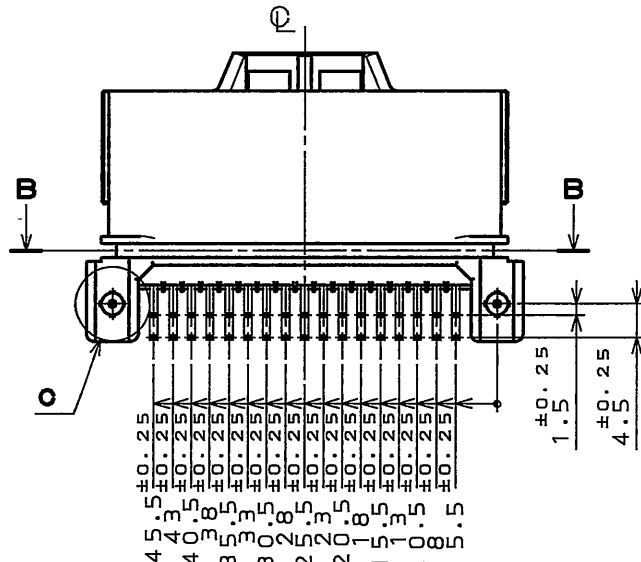
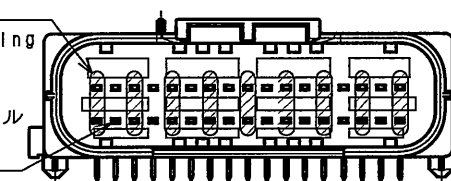


① Cable for socket housing
Can be use $\phi 2.3$ MAX.

無印箇所
ソケットハウジング側ケーブル
φ 1.9まで使用可能位置

6.4 Unmarked
Cable for socket housing
Can be use $\phi 1.9$ MAX.

Applicable cable size for socket housing
ソケットハウジング側適用ケーブル径



00F-0-212E(03.08)

Mouser Electronics

Authorized Distributor

Click to View Pricing, Inventory, Delivery & Lifecycle Information:

[JAE Electronics:](#)

[MX23A34NF6](#)