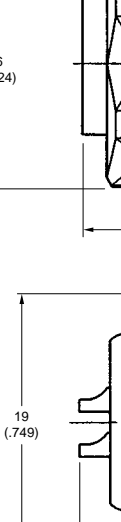


General Purpose Waterproof, Miniature Circular Connectors



- Jam nut receptacle allows easy panel mounting
- Front insulator has synthetic rubber for waterproofing
- Cable plug is waterproof when assembled
- Solder contacts



Technical drawings of the 1000 Series 1/2" (1.27) diameter ball bearings. The top drawing shows the front view with dimensions: 26 (1.024) for the outer diameter and 21 (.827) for the inner diameter. The bottom drawing shows the side view with dimensions: 19 (.749) for the bearing height and 21 (.827) for the inner diameter.

• • • • •

GENERAL SPECIFICATIONS

Number of Contacts	3, 4, 8
Current Rating	For 3 and 4 contact: 10 Amps per contact For 8 contact: 5 Amps per contact
Rated Voltage	AC500V, DC700V
Dielectric Withstanding Voltage	For 3 contact: 2,000 VAC r.m.s. (for one minute) For 4 and 8 contact: 1,500 VAC r.m.s. (for one minute)
Operating Temperature	-25°C to +85°C
Connection	Solder (Condition: 350° ± 10°C, 3 seconds ±1 second)
Insertion/Removal Life	100 times

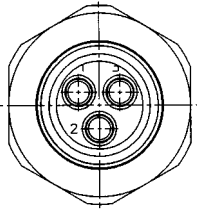
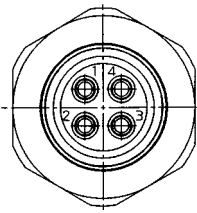
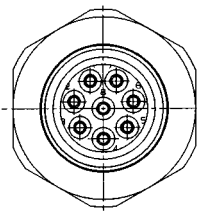
Components	Receptacle	Plug
Shell	Zinc alloy (Nickel plating)	—
Front Insulator	Synthetic rubber	Synthetic resin
Rear Insulator	Synthetic rubber	Synthetic resin
Contact	Copper alloy (Gold plating)	Copper alloy (Gold plating)
Jam Nut	Copper alloy (Nickel plating)	—
Plate Washer	Copper alloy (Nickel plating)	—
Internal Tooth Washer	Copper alloy (Nickel plating)	—
O-Ring	Synthetic rubber	Synthetic rubber
Barrel	—	Zinc alloy (Chrome plating)
Coupling Nut	—	Copper alloy (Nickel plating)
Spacer	—	Synthetic resin
Hood	—	Synthetic resin
Adapter	—	Synthetic resin

	JB3	*	T	*	*	*	1
Series							
Shell Style							
E – Straight Plug (without endbell)							
C – Jam Nut Receptacle							
Connector Size							
No. of Contacts							
03 – 3							
04 – 4							
08 – 8							
Contact Type							
M – Pin, F – Socket							
Contact Size							
G – #12, K – #20							
Modification							

JAE

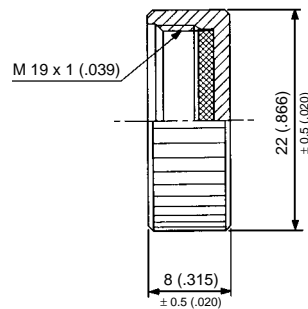
JB3 SERIES CONNECTORS

General Purpose Waterproof, Miniature Circular Connectors

Arrangement	3 Contacts	4 Contacts	8 Contacts
Contact Arrangement (View from Pin Insert Mating Side)			
Size x No. of Contact	#12 x 3	#12 x 4	#20 x 8
Current Rating	10 Amps	10 Amps	5 Amps
Rated Voltage	500 VAC rms, 700 VDC	500 VAC rms, 700 VDC	500 VAC rms, 700 VDC
D.W.V. (for one minute)	2,000 VAC rms	1,500 VAC rms (for one minute)	1,500 VAC rms (for one minute)

RECEPTACLE DUST CAP

(Fits All Jam Nut Receptacles)



APPLICABLE CABLES

Receptacle

No. of contacts	Cross-sectional area of core wire of applicable cable	Solder pot diameter of receptacle
3	Less than 3.5mm ²	ø 2.9 (.114)
4	Less than 2mm ²	ø 1.9 (.075)
8	Less than 0.75mm ²	ø 1.2 (.047)

Plug

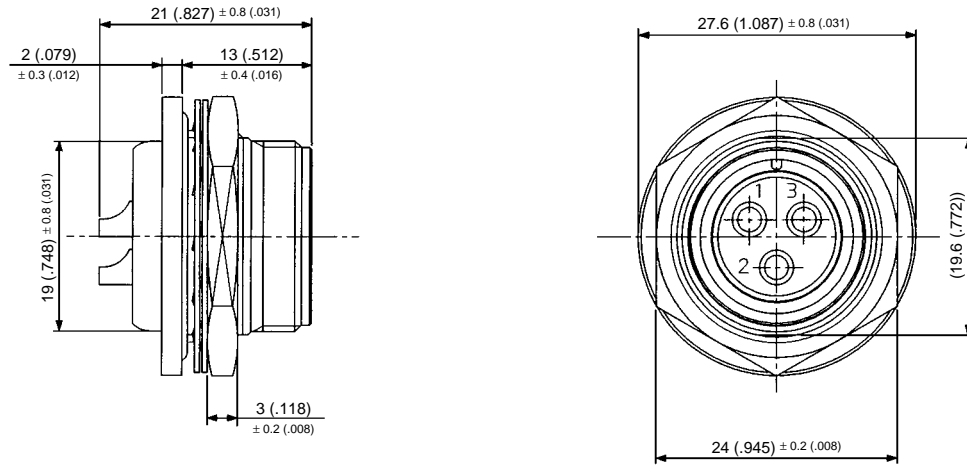
No. of contacts	Specs of applicable cables	Finished outside diameter
3	VVR (TDS) 3 x 2.0	ø 11.25 ± 0.25 (.443 ± .010)
4	KEV-AL 2P x 1/0.65A	ø 8 ± 0.2 (.315 ± .008)
8	KPCV-ALD 3P x ø 0.65A	ø 10 ± 0.2 (.394 ± .008)

Dimensions in mm (inches).

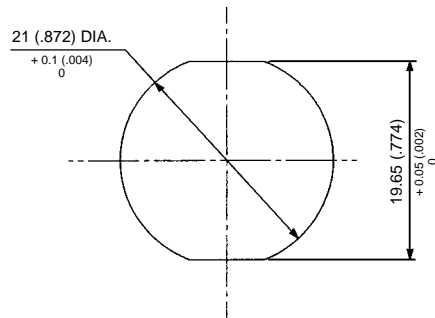
JB3 SERIES CONNECTORS

General Purpose Waterproof, Miniature Circular Connectors

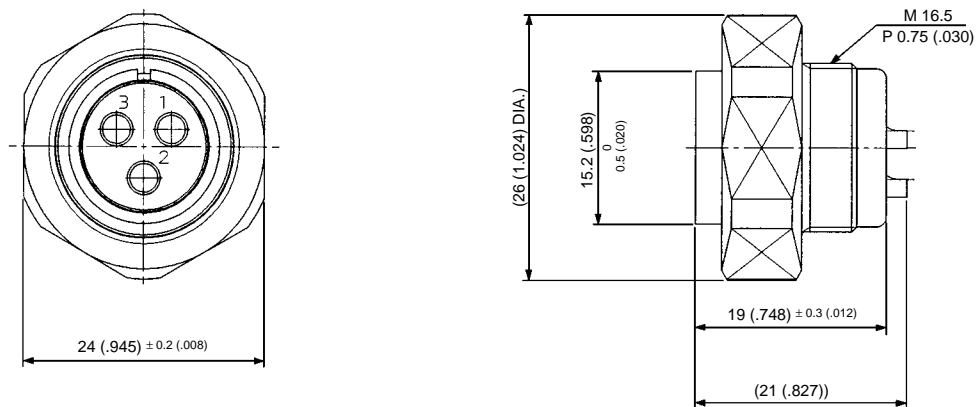
JAM NUT RECEPTACLE



PANEL CUTOUT (Panel Thickness: 0.5 ~ 2.5)



STRAIGHT PLUG



Dimensions in mm (inches).

Mouser Electronics

Authorized Distributor

Click to View Pricing, Inventory, Delivery & Lifecycle Information:

[JAE Electronics:](#)

[JB3CT04MG1](#)