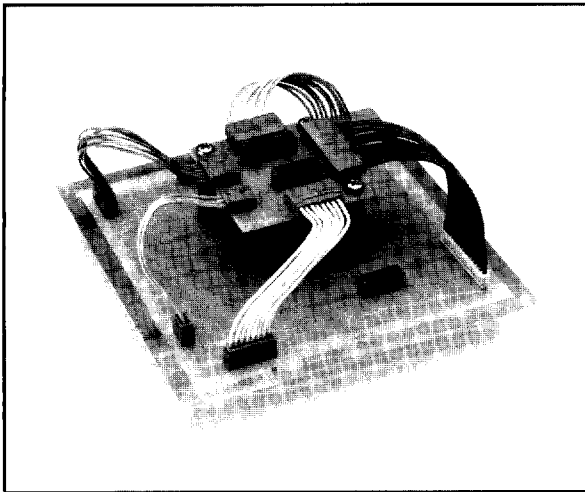


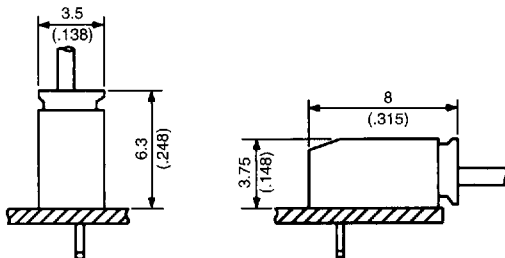
IL-Y SERIES CONNECTORS

1.5mm (.059") Contact Spacing, PCB-to-Cable (Crimp Type) Connectors



FEATURES

- Four-wall boxed pin header
- Pre-formed solder tails for board retention during soldering
- Highly reliable socket contact
- Easy lock-on mechanism
- Stepped socket housing enables easy unmating
- Anti-wicking feature



This low profile, board-to-cable connector series features 1.5mm (.059") contact spacing. The overall height of mated connectors is 6.3mm (.248") for vertical connection. Connector thickness is 3.5mm (.138"). The low profile design makes the IL-Y Series connectors ideal for use on high component-density electronic products.

Board-side pin headers and cable-side socket housings are available with 2 to 15 contacts. A semi-automatic crimping machine can make high volume socket contact termination simple and fast.

Applications include VCRs, TV sets, audio equipment, office automation equipment, computers, and test and measurement equipment.

GENERAL SPECIFICATIONS

Number of Contacts	2 to 15 contacts
Contact Spacing	1.5mm (.059"), single row
Current Rating	1 Amp
Operating Voltage	200 VAC, 200 VDC
Dielectric Withstanding Voltage	500 VAC r.m.s. (for one minute)
Insulation Resistance	100 megohms min.
Contact Resistance	20 milliohms max.
Operating Temperature	-40°C to +85°C
Applicable Wire Sizes	#26 to #30 AWG, stranded
Applicable PCB Thickness	0.8mm (.031") to 1.6mm (.063")

MATERIALS AND FINISHES

Description	Materials/Finishes
Insulator	6-6 Nylon (UL94V-0, Light Brown)
Pin Contact	Brass/Tin Plating over Nickel
Socket Contact	Phosphor Bronze/Tin Plating

ORDERING INFORMATION

	IL-Y	**	*	*	15	*	*	-	E	F
Series										
No. of Contacts										
2 to 15										
Contact Type										
P - Pin S - Socket										
Contact Arrangement										
S - Single Row										
Contact Spacing										
15 - 1.5mm (.059")										
Termination										
C - Crimp (Socket Housing)										
L - Right Angle Through Hole (Pin Header)										
T - Straight Through Hole (Pin Header)										
PCB Thickness/Wire Size										
2 - 0.8mm (.031") to 1.6mm (.063") PCB Thickness (Pin Header)										
3 - #26 AWG to #30 AWG Wire Size (Socket Housing)										
Tail Length (Pin Header)										
E - 2.7mm (.106")										
Tail (Pin Header)										
F - Formed										

Dimensions and specifications subject to change without notice.

Hong Kong
Tel: 852-2723-7782
Fax: 852-2723-9028

Japan
03-3780-2715
03-3780-2883

Singapore
65-748-1332
65-748-2920

Taiwan
02-555-9711
02-556-5424

United Kingdom
1276-21717
1276-66165

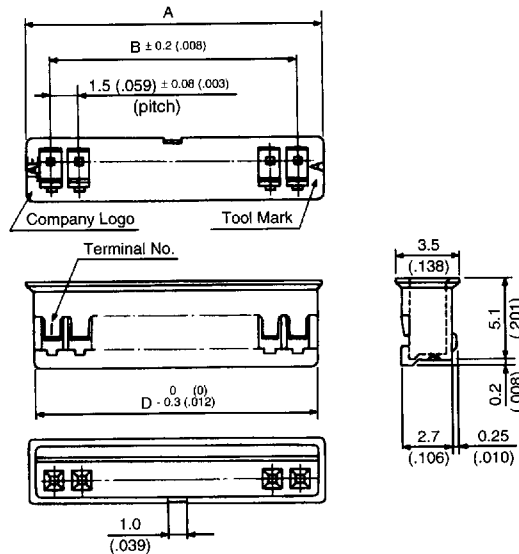
United States
714-753-2600
714-753-2699



IL-Y SERIES CONNECTORS

1.5mm (.059") Contact Spacing, PCB-to-Cable (Crimp Type) Connectors

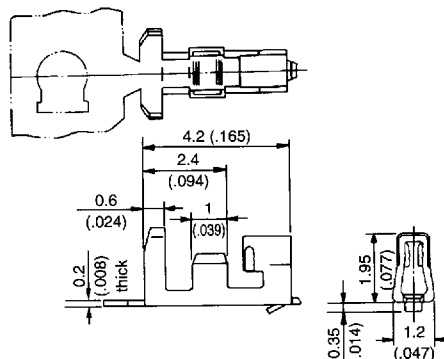
SOCKET HOUSING: IL-Y-**-S-S15C3



No. of Contacts	Part Number	A ± 0.1 (.004)	B ± 0.2 (.008)	D +0 -0.3 (+0 -.012)
2	IL-Y- 2S-S15C3	4.25 (.167)	1.5 (.059)	3.5 (.138)
3	IL-Y- 3S-S15C3	5.75 (.226)	3.0 (.118)	5.0 (.197)
4	IL-Y- 4S-S15C3	7.25 (.285)	4.5 (.177)	6.5 (.256)
5	IL-Y- 5S-S15C3	8.75 (.344)	6.0 (.236)	8.0 (.315)
6	IL-Y- 6S-S15C3	10.25 (.404)	7.5 (.295)	9.5 (.374)
7	IL-Y- 7S-S15C3	11.75 (.463)	9.0 (.354)	11.0 (.433)
8	IL-Y- 8S-S15C3	13.25 (.522)	10.5 (.413)	12.5 (.492)
9	IL-Y- 9S-S15C3	14.75 (.581)	12.0 (.472)	14.0 (.551)
10	IL-Y-10S-S15C3	16.25 (.640)	13.5 (.531)	15.5 (.610)
11	IL-Y-11S-S15C3	17.75 (.699)	15.0 (.591)	17.0 (.669)
12	IL-Y-12S-S15C3	19.25 (.758)	16.5 (.650)	18.5 (.728)
13	IL-Y-13S-S15C3	20.75 (.817)	18.0 (.709)	20.0 (.787)
14	IL-Y-14S-S15C3	22.25 (.876)	19.5 (.768)	21.5 (.846)
15	IL-Y-15S-S15C3	23.75 (.935)	21.0 (.827)	23.0 (.906)

SOCKET CONTACT (CRIMP TYPE)

- **Part Number: IL-Y-C3-A-10000**
10000 contacts per reel
- **Applicable wire sizes:**
#26 to #30 AWG, stranded
- **Wire insulation dia.:**
1.0mm (.039") to 0.7mm (.028")



• TOOLING

Semi-Automatic Crimping Machine:
CT350-2B-ILY

Hand Crimping Tool:
CT150-2-ILY
CT150-4-ILY

Contact Insertion Tool:
IT250-1-ILY

Contact Extraction Tool:
ET-ILS-NO2

Dimensions in mm (inches).

D 05F ■ 4893465 0000707 273 ■

Hong Kong
Tel: 852-2723-7782
Fax: 852-2723-9028

Japan
03-3780-2715
03-3780-2883

Singapore
65-748-1332
65-748-2920

Taiwan
02-555-9711
02-556-5424

United Kingdom
1276-21717
1276-66165

United States
714-753-2600
714-753-2699



Mouser Electronics

Authorized Distributor

Click to View Pricing, Inventory, Delivery & Lifecycle Information:

[JAE Electronics:](#)

[CT150-2-ILY](#)