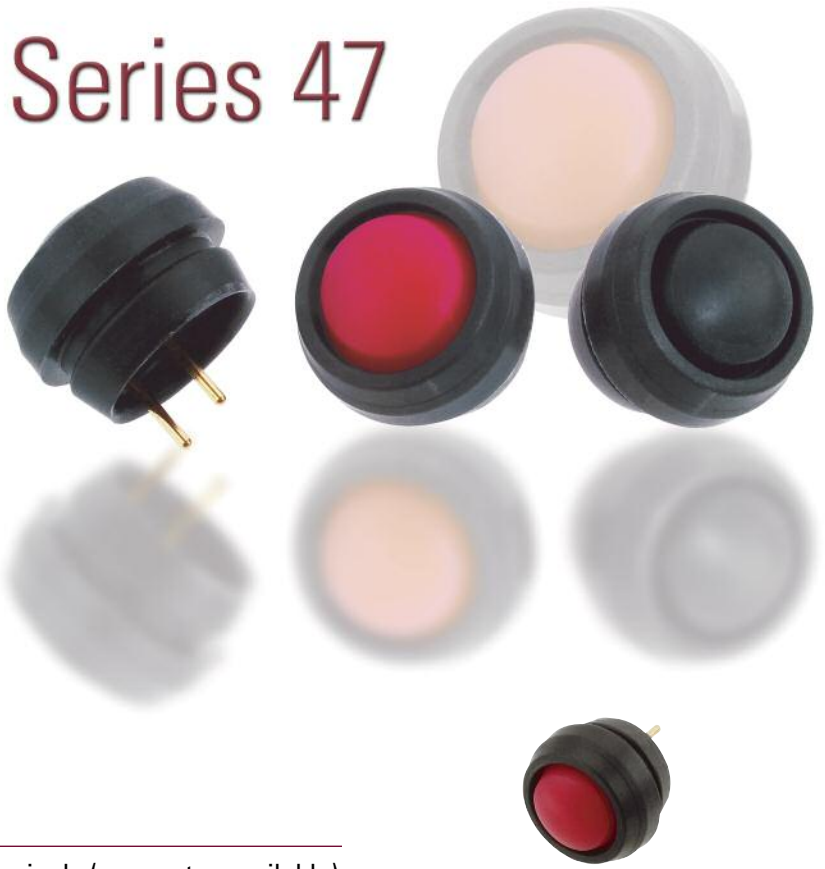


Series 47

LOW COST SEALED

The Series 47 is a uniquely designed sealed miniature pushbutton switch. The silicone button and body can be panel mounted and terminated with a standard connector or mounted in a P.C. board. The switches come in two levels of sealing: a panel sealed only version and a fully sealed version with epoxy sealed base. Both meet respective IP67 requirements. The buttons are available in seven different colors. All this at a very affordable price.



APPLICATIONS

- Marine equipment
- Medical equipment
- Outdoor controls
- Food processing equipment
- Recreational vehicles

KEY FEATURES:

- Sealed to IP67
- Small size
- 7 button colors
- P.C. terminals (connector available)
- Long life
- Low cost

ACTUAL SIZE

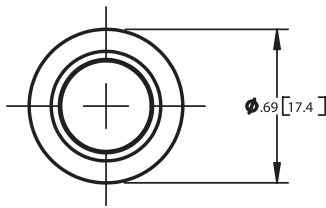
ORDERING INFORMATION:

Part Number	Button Color	Panel Sealed	Epoxy Sealed Base
47-1111	Black	✓	✓
47-1121	Red	✓	✓
47-1131	Green	✓	✓
47-1141	White	✓	✓
47-1151	Yellow	✓	✓
47-1161	Blue	✓	✓
47-1171	Orange	✓	✓
47-2111	Black	✓	
47-2121	Red	✓	
47-2131	Green	✓	
47-2141	White	✓	
47-2151	Yellow	✓	
47-2161	Blue	✓	
47-2171	Orange	✓	

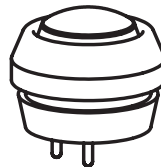
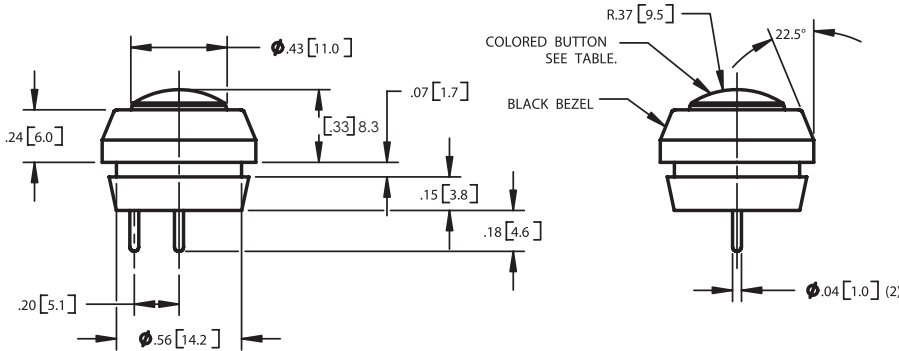
STANDARDS / AGENCY / RATINGS:



47-XXX



SCHEMATIC
FORM A
SPST-NO



Installation of a bi-directional TVS diode between the outer terminal of the switch and ground is recommended to avoid voltage spikes. Consult the factory for details.

MECHANICAL / ELECTRICAL CHARACTERISTICS:

Travel (nom):
.020 inches

Life:
100,000 cycles

Operating force:
1,000 grams (nominal)

Sealed to:
IP67

Operating temperature:
-40°C to +85°C

Button material:
silicone

Contact:
metal snap dome providing a tactile feel

Terminal finish:
gold over nickel

Dielectric strength:
1,000 VAC

Insulation Resistance:
10,000 MΩ

Contact Resistance (initial):
<100 Ω

Current rating:
20 mA @ 28 VDC

Switch terminals mate with:
ITW Pancon Mas-Con
Connector CE100F24-3-DB

Recommended panel cut-out:
0.565" / 0.560" diameter
(ø14.40 / 14.22)

Recommended panel thickness:
0.060" (1.52) max

Mouser Electronics

Authorized Distributor

Click to View Pricing, Inventory, Delivery & Lifecycle Information:

ITW Switches:

[47-2161](#) [47-2121](#) [47-2141](#) [47-2131](#) [47-2171](#) [47-2151](#) [47-2111](#) [47-1141](#) [47-1161](#) [47-1121](#) [47-1111](#) [47-1151](#)
[47-1131](#) [47-1171](#)