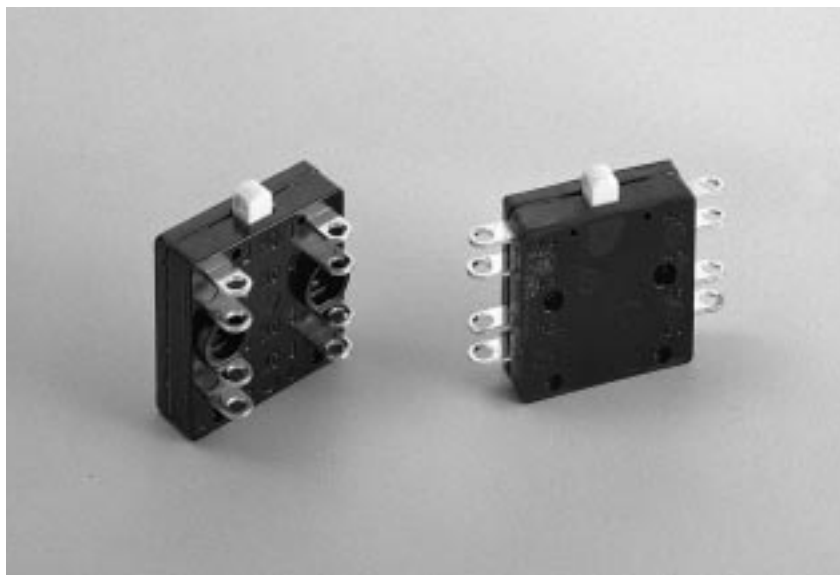


Type 26 – Sub-Miniature, 8-Amp, Double Pole/Simultaneous, Sub-Miniature

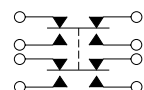


Typical Applications

- Basic switch for specialty switches
- Aircraft rotary actuators
- Aircraft valve actuators
- Circuit breakers
- Aircraft contactors



actual size



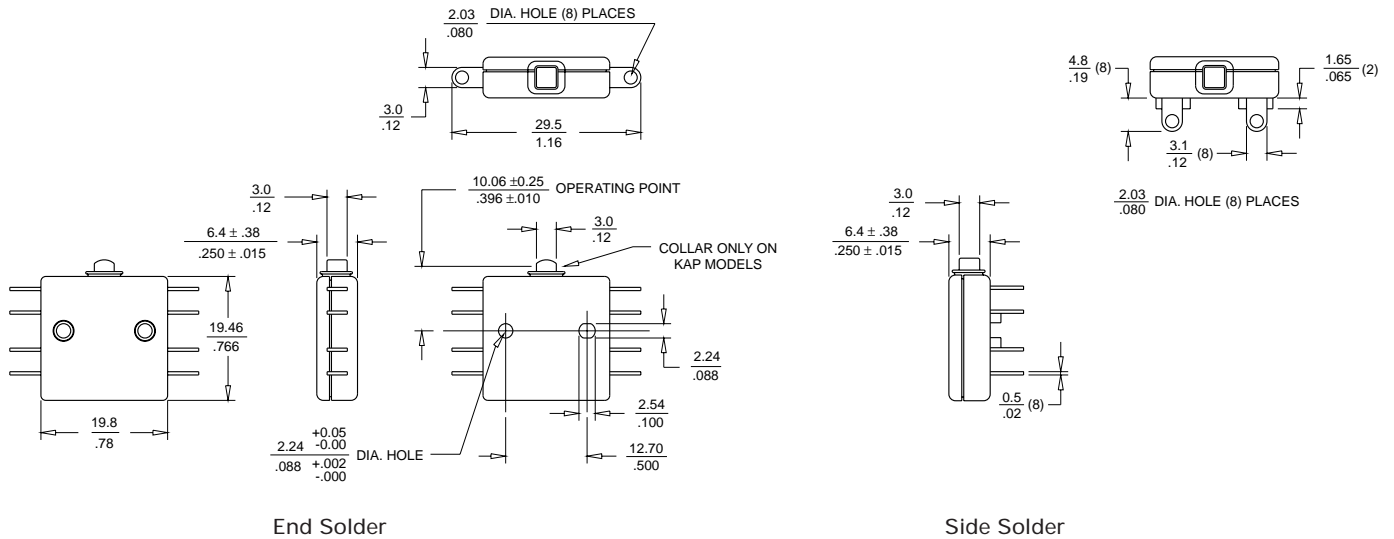
Form ZZ

Features

- DPDT-DB (Form ZZ) contact arrangement
- Provides the option of controlling up to 4 isolated circuits
- May be wired externally to provide two commons to form standard DPDT (Form CC) switch
- Standard contacts are fine silver or gold-plated
- End or side solder terminals
- Variety of actuators available
- MIL-S-8805 QPL listed as follows:
26-888051 M8805/77-001
26-988051 M8805/77-002
- Approvals: UL, CSA

Mechanical Characteristics

Pretravel: .050 max
Overtravel: .012 min
Operating Force: 12 ± 4 oz
Release Force: 5 oz min
Movement Differential: $.020 \pm_{.005}^{.010}$
Operating Point: $.396 \pm .015$
(from mounting hole centers)



millimeters
inches

Ordering Information

Part Number	Temperature Index	Simultaneity	Contacts	Terminals
26-804	To 275° F Ambient	Simultaneous*	Silver**	End Solder
26-888051	To 275° F Ambient	Ref. M 8805/77-001	Gold-Plated	End Solder
26-904	To 275° F Ambient	Simultaneous*	Silver**	Side Solder
26-988051	To 275° F Ambient	Ref. M 8805/77-002	Gold-Plated	Side Solder

*Within .004" of plunger travel.

**For electrical loads under 250 mA, consult factory.

Electrical Ratings – 26

Circuitry	Current	Voltage
DPDT-DB (Form ZZ)	8 amps	125/250 VAC 75-80% PF
	5 amps	28 VDC

UL Recognized

Mouser Electronics

Authorized Distributor

Click to View Pricing, Inventory, Delivery & Lifecycle Information:

[ITW Switches:](#)

[26-804](#) [26-888051](#) [26-988051](#)