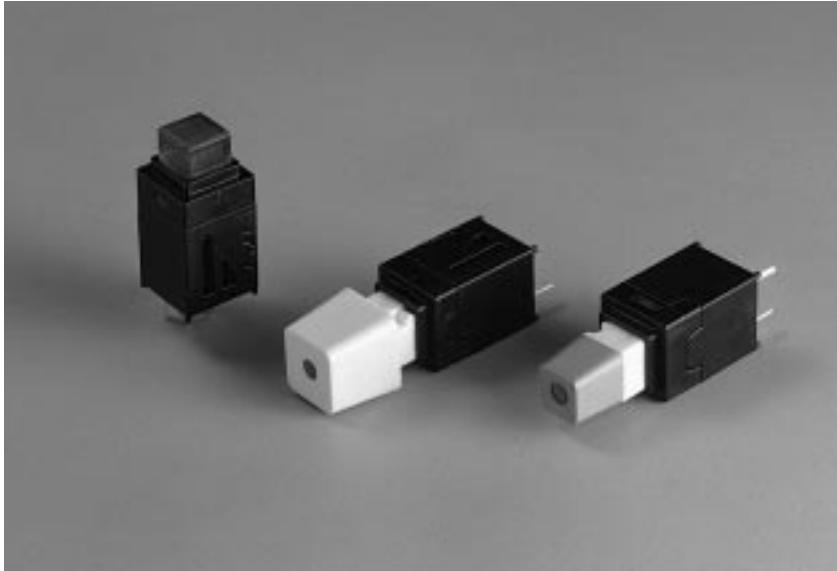


Series 39 – LED Miniature



Typical Applications

- Control panel assemblies
- Recording equipment
- Telecom switching systems
- Scientific instrumentation
- Telecom test gear



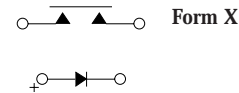
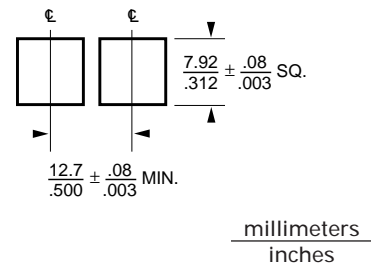
actual size

Features

- Momentary or maintained
- Bifurcated silver-plated contacts
- Available in T-1 LED lighted or non-lighted versions
- Button styles:
Standard – lighted and non-lighted
Keycap – lighted and non-lighted
- Variety of colored lenses and keycaps
- Connector mounting options:
39-800001 – In-line mount;
39-800002 – Right-angle mount
- Life: Momentary – 1,000,000 cycles
Maintained – 25,000 cycles
- Wave Solderable

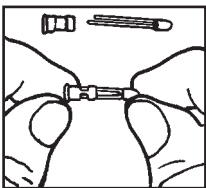
Mounting Data

Panel Cutout Recommendations

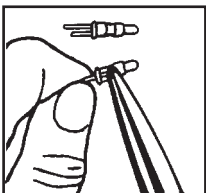


L.E.D. Installation

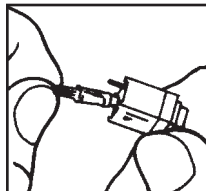
L.E.D.'s may be installed by customer using the following: Ref T-1 L.E.D.



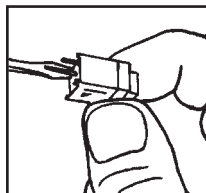
1. Assemble L.E.D. to support by inserting leads through press fit holes in support. Observe polarity (+).



2. Crimp wires against sides of L.E.D. support.

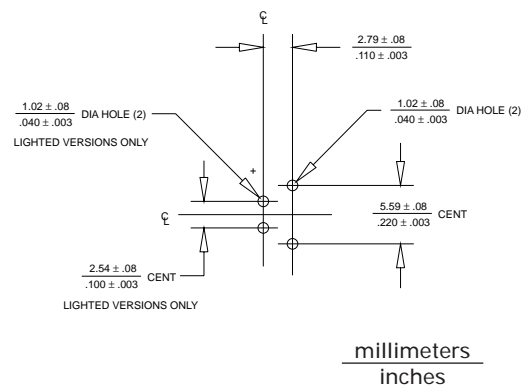


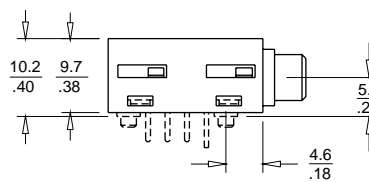
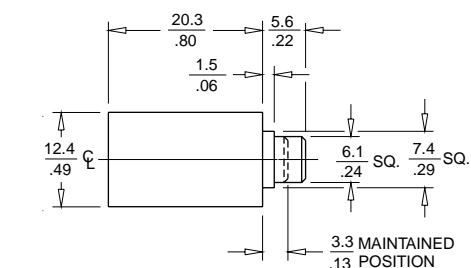
3. Insert support and L.E.D. into housing. Parts are keyed to insure proper orientation.



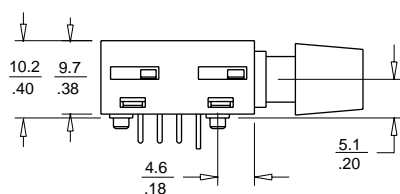
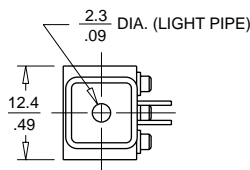
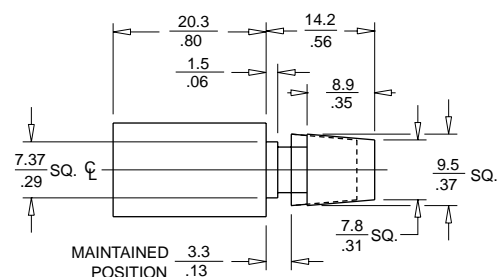
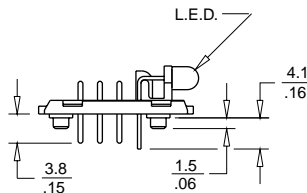
4. Secure support to housing with 90° clockwise twist.

PC Pattern





Standard Button



Keycap Button

millimeters
inches

Electrical and Mechanical Characteristics

Characteristics:

Dielectric Withstanding Voltage:
1,000 VRMS (1 mA max leakage)

Insulation Resistance:
1000 Mohm min @ 500 VDC

Contact Bounce: 500 microseconds max

Contact Resistance: Initial:
25 mOhm max

End: 50 mOhm max

Life: Momentary: 250,000 cycles

Maintained: 25,000 cycles

Button Travel: .120 nominal

Operating Force: 8 oz nominal

Materials:

Housing: Modified Polyester (UL 94 V-0)

Actuator: Polycarbonate (UL 94 V-2)

Cam Follower: Copper Alloy

Contacts: Copper Alloy Silver-Plated

Spring: 302 Stainless Steel

Base: Polyetherimide (UL 94 V-0)

Terminals: Copper Alloy Silver-Plated

Keycap Plunger:

Polycarbonate (UL 94 V-2)

Jeweled Button:

Polycarbonate (UL 94 V-2)

Keycap: ABS (UL 94 HB)

Light Pipe: Clear Acrylic (UL 94 HB)

LED T-1 High Efficiency

Ordering Information

39-4 Button Style			
Part Number	L.E.D. Color†	Button Color	Action
39-422106	—	Black	Mom
39-422508	Red	Red	Mom
39-422607	Green	Clear	Mom
39-422609	Green	Green	Mom
39-422707	Yellow	Clear	Mom
39-422710	Yellow	Yellow	Mom
39-423508	Red	Red	Maint
39-423609	Green	Green	Maint

39-5 Key cap Style		
Part Number	L.E.D. Color†	Action
39-522101	—	Mom
39-522501	Red	Mom
39-522601	Green	Mom
39-522701	Yellow	Mom
39-523101	—	Maint
39-523501	Red	Maint
39-523601	Green	Maint
39-523701	Yellow	Maint

*Order keycap and light pipe separately (see "Series 39"—page 29) as necessary.
†Lighted styles have button and LED installed as required.

Electrical Characteristics

Circuitry	Current	Voltage
DPDT-SB	.25 amp	30 VDC max Res

Mouser Electronics

Authorized Distributor

Click to View Pricing, Inventory, Delivery & Lifecycle Information:

[ITW Switches:](#)

[39422609](#) [39-422508](#) [39-423508](#)