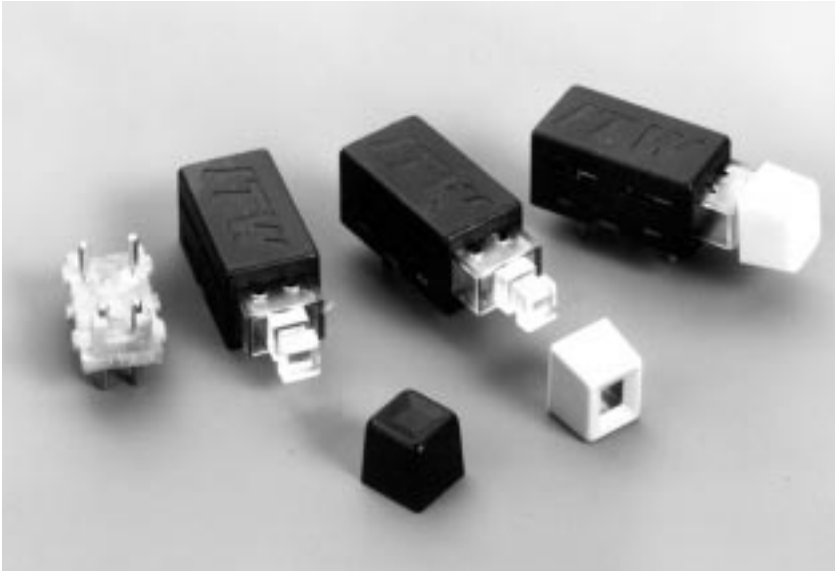


Series 39-7 – Ultra-Miniature, Process Compatible



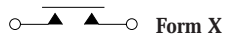
Typical Applications

- Computers
- Hand-held instruments
- Compact communication equipment
- Battery operated monitors
- Diagnostic devices
- Portable peripherals



actual size

Switches shown with optional keycap –
contact factory.



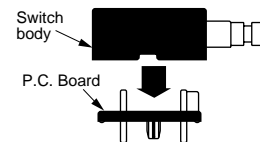
Features

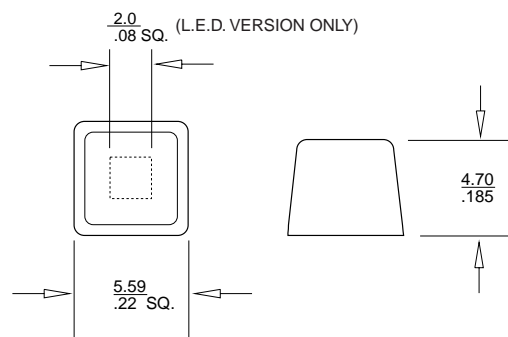
- Extremely small
- LED indication
- Low level switching
- Gold contacts
- Through-hole mounting
- Process compatible
- Horizontal mounting
- Momentary and maintained versions
- Resistance to high temperature
- Optional tape and reel or tube packaging

Installation

The terminal base is installed manually, or with automatic equipment, on the PC board. It is then wave soldered along with other board components. A standard cleaning process removes flux.

When the board and its components have been cleaned and dried, the pushbutton switch body, which has not been exposed to the contamination associated with these operations, is snapped positively onto the terminal base, where it is securely retained.





Specifications

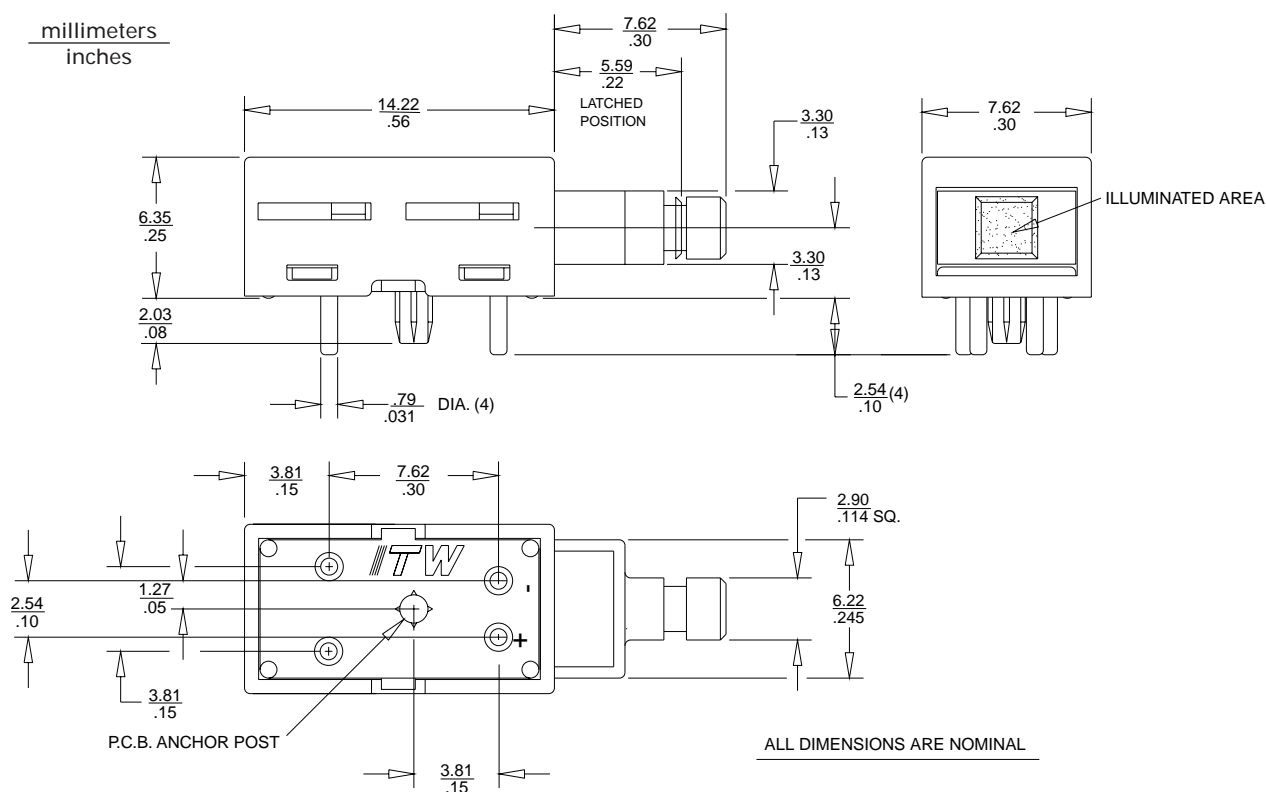
Momentary or maintained positions

IR process compatible

Plunger travel: .13 inch

Positive L.E.D. is identified by (+) on the bottom surface of the base. L.E.D. forward current: 20mA.

Assembled and separate components



Ordering Information Assembled Base & Body

Part Number	LED color	Action
39-712100	—	Mom
39-712200	Red	Mom
39-712300	Green	Mom
39-712400	Yellow	Mom
39-713100	—	Maint
39-713200	Red	Maint
39-713300	Green	Maint
39-713400	Yellow	Maint

Ordering Information Base & Body Separate

Part Number	LED color	Action
39-722100	—	Mom
39-722200	Red	Mom
39-722300	Green	Mom
39-722400	Yellow	Mom
39-723100	—	Maint
39-723200	Red	Maint
39-723300	Green	Maint
39-723400	Yellow	Maint

Ordering Information Keycap

Part Number	Lighted	Color
80397010	No	Lt. Grey
80397012	No	Black
80397013	No	White
80397014	Yes	Lt. Grey
80397016	Yes	Black
80397017	Yes	White

Electrical Characteristics

Circuitry	Current	Voltage
SPST-NO-DB (Form X)	5mA(typ)	5 VDC

Mouser Electronics

Authorized Distributor

Click to View Pricing, Inventory, Delivery & Lifecycle Information:

[ITW Switches:](#)

[80-397014](#)