

FULLY SEALED PUSHBUTTON WITH WIRE LEADS

This fully sealed switch series is SPST-DB for a variety of circuit requirements. The double break mechanism also provides reliable switching of DC loads. This rugged switch is ideal for harsh environments.

Series 49-59W



ACTUAL SIZE

APPLICATIONS

- Communications
- Instrumentation
- Data processing
- Military environments
- Mass transport controls
- Dry circuit switching

KEY FEATURES:

- Fully sealed to IP67
- Momentary action
- Wire leads
- Flame retardant UL rated material
- Gold plated contacts
- Life up to 500,000 cycles

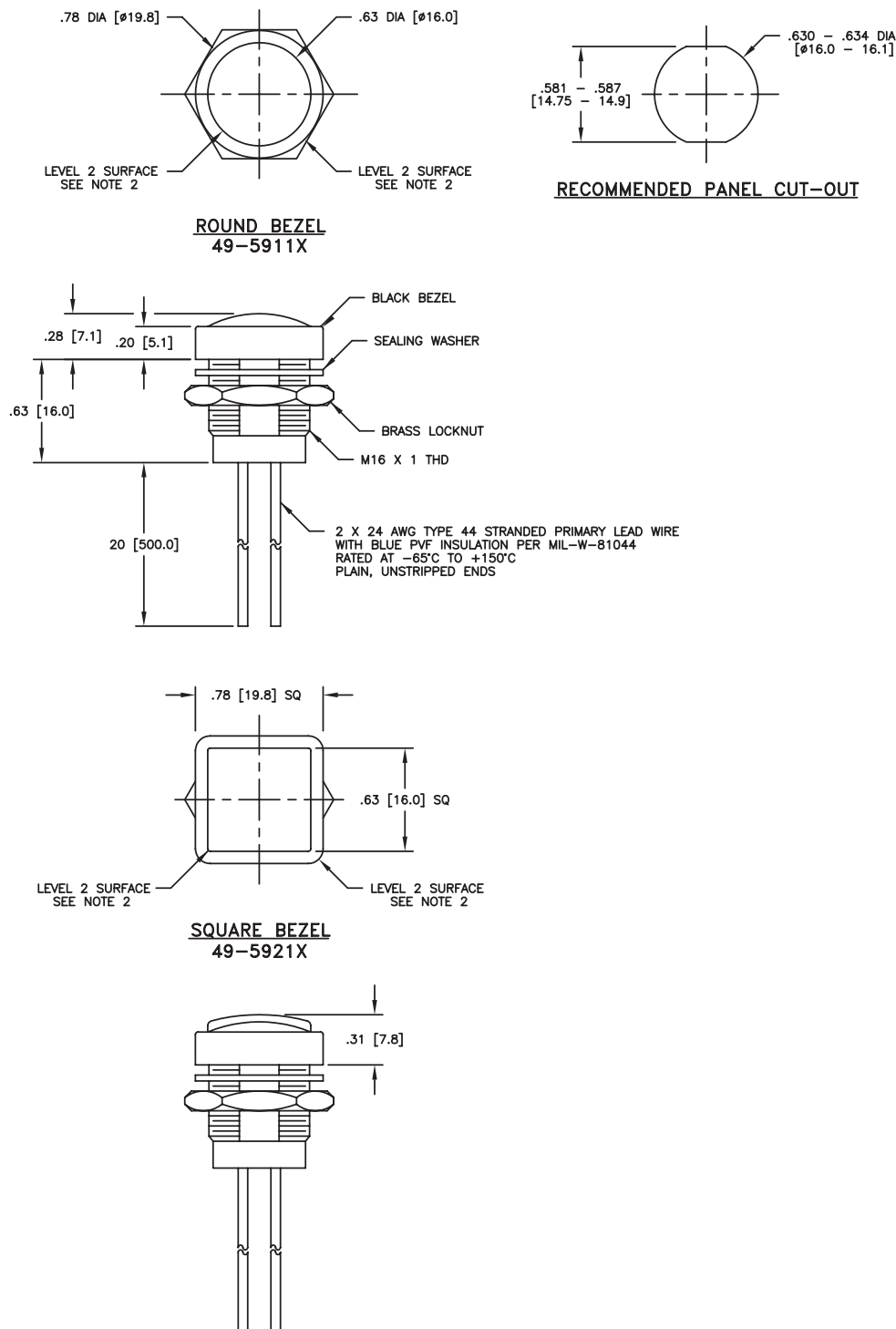
ORDERING INFORMATION:

Part Number	Button Style	Button Color
49-59111	Round bezel	Black
49-59112	Round bezel	Red
49-59113	Round bezel	Green
49-59211	Square bezel	Black
49-59212	Square bezel	Red
49-59213	Square bezel	Green

STANDARDS / AGENCY / RATINGS:



PRODUCT DRAWINGS



MECHANICAL / ELECTRICAL CHARACTERISTICS:

Circuit:

SPST-NO-DB

Travel:

0.09 inches / 2.3 mm (nominal)

Operating force:

3N / 306 grams

Panel thickness:

0.31 inches 8 mm (Max)

Contact material:

gold plated palladium nickel

Contact resistance (initial):

150 mΩ max including wire leads

Current Rating (typical):

400mA at 32 VAC resistive
100mA at 50 VDC resistive
125mA at 125 VAC resistive

Dielectric strength:

1000 VAC for 1 min

Insulation resistance:

1 GΩ @ 500 VDC

Contact resistance:

50 mΩ max initial including leads

Life (nominal):

1,000,000 cycles (mechanical)
500,000 (max) cycles (electrical)

Operating temperature:

-55°C to 105°C
(-67°F to +221°F)

Body and button material:

PBT

Mouser Electronics

Authorized Distributor

Click to View Pricing, Inventory, Delivery & Lifecycle Information:

[ITW Switches:](#)

[4959212](#) [4959213](#)